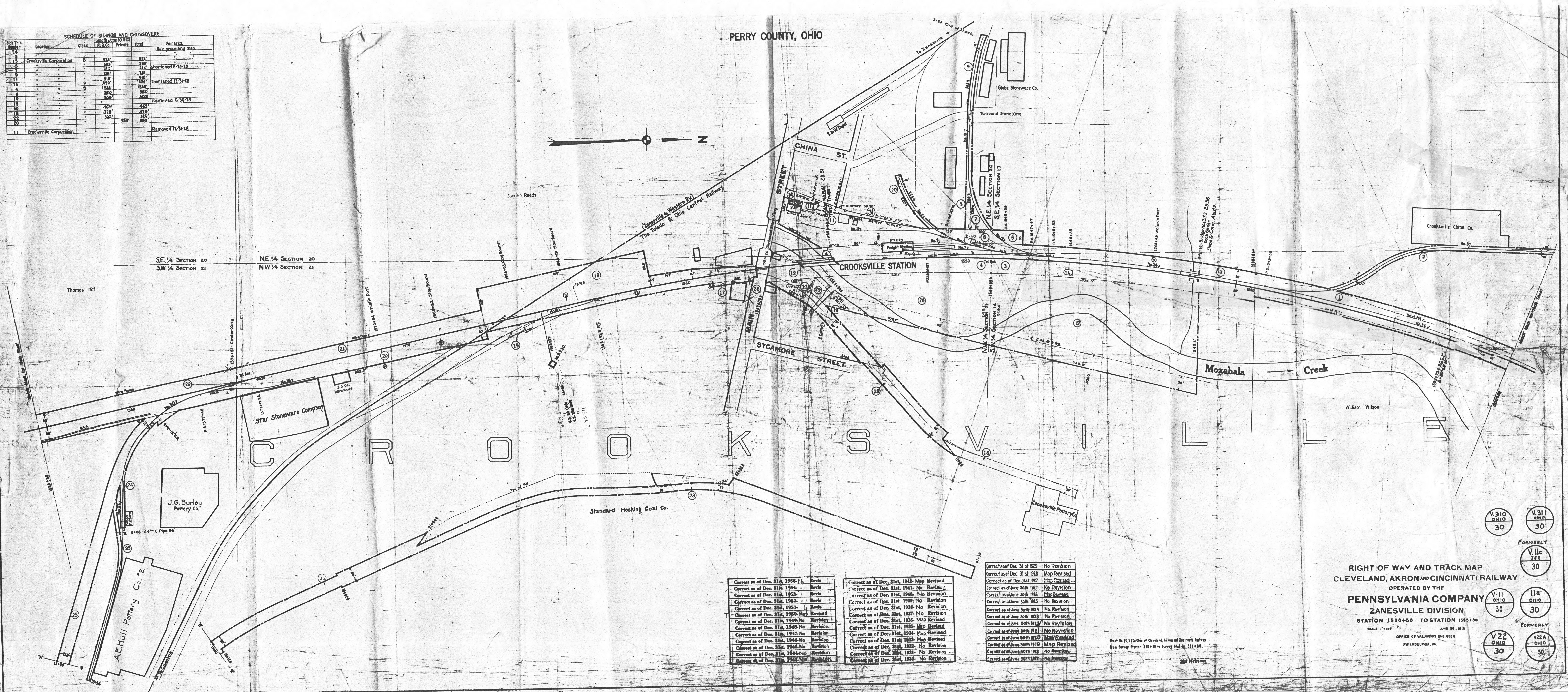


SCHEDULE OF SIDINGS AND CROSSOVERS					
Side Trk. Number	Location	Class	Length June 30, 1922	Remarks	
24					
13	Crookville Corporation	B	228'	312'	Shortened 6-30-10
9			231'	312'	
11			618'	1459'	Shortened 12-31-18
12		P	1459'	1459'	
6		B	1586'	1586'	
10			308'	308'	Removed 6-30-18
12			469'	469'	
18			318'	318'	
22			324'	324'	
20			358'	358'	
11	Crookville Corporation				Removed 12-31-18



Correct as of Dec. 31st, 1925. No Revision	Correct as of Dec. 31st, 1925. Map Revised	Correct as of Dec. 31st, 1925. No Revision
Correct as of Dec. 31st, 1924. No Revision	Correct as of Dec. 31st, 1924. Map Revised	Correct as of Dec. 31st, 1924. No Revision
Correct as of Dec. 31st, 1923. No Revision	Correct as of Dec. 31st, 1923. Map Revised	Correct as of Dec. 31st, 1923. No Revision
Correct as of Dec. 31st, 1922. No Revision	Correct as of Dec. 31st, 1922. Map Revised	Correct as of Dec. 31st, 1922. No Revision
Correct as of Dec. 31st, 1921. No Revision	Correct as of Dec. 31st, 1921. Map Revised	Correct as of Dec. 31st, 1921. No Revision
Correct as of Dec. 31st, 1920. No Revision	Correct as of Dec. 31st, 1920. Map Revised	Correct as of Dec. 31st, 1920. No Revision
Correct as of Dec. 31st, 1919. No Revision	Correct as of Dec. 31st, 1919. Map Revised	Correct as of Dec. 31st, 1919. No Revision
Correct as of Dec. 31st, 1918. No Revision	Correct as of Dec. 31st, 1918. Map Revised	Correct as of Dec. 31st, 1918. No Revision
Correct as of Dec. 31st, 1917. No Revision	Correct as of Dec. 31st, 1917. Map Revised	Correct as of Dec. 31st, 1917. No Revision
Correct as of Dec. 31st, 1916. No Revision	Correct as of Dec. 31st, 1916. Map Revised	Correct as of Dec. 31st, 1916. No Revision
Correct as of Dec. 31st, 1915. No Revision	Correct as of Dec. 31st, 1915. Map Revised	Correct as of Dec. 31st, 1915. No Revision
Correct as of Dec. 31st, 1914. No Revision	Correct as of Dec. 31st, 1914. Map Revised	Correct as of Dec. 31st, 1914. No Revision
Correct as of Dec. 31st, 1913. No Revision	Correct as of Dec. 31st, 1913. Map Revised	Correct as of Dec. 31st, 1913. No Revision
Correct as of Dec. 31st, 1912. No Revision	Correct as of Dec. 31st, 1912. Map Revised	Correct as of Dec. 31st, 1912. No Revision
Correct as of Dec. 31st, 1911. No Revision	Correct as of Dec. 31st, 1911. Map Revised	Correct as of Dec. 31st, 1911. No Revision
Correct as of Dec. 31st, 1910. No Revision	Correct as of Dec. 31st, 1910. Map Revised	Correct as of Dec. 31st, 1910. No Revision
Correct as of Dec. 31st, 1909. No Revision	Correct as of Dec. 31st, 1909. Map Revised	Correct as of Dec. 31st, 1909. No Revision
Correct as of Dec. 31st, 1908. No Revision	Correct as of Dec. 31st, 1908. Map Revised	Correct as of Dec. 31st, 1908. No Revision
Correct as of Dec. 31st, 1907. No Revision	Correct as of Dec. 31st, 1907. Map Revised	Correct as of Dec. 31st, 1907. No Revision
Correct as of Dec. 31st, 1906. No Revision	Correct as of Dec. 31st, 1906. Map Revised	Correct as of Dec. 31st, 1906. No Revision
Correct as of Dec. 31st, 1905. No Revision	Correct as of Dec. 31st, 1905. Map Revised	Correct as of Dec. 31st, 1905. No Revision
Correct as of Dec. 31st, 1904. No Revision	Correct as of Dec. 31st, 1904. Map Revised	Correct as of Dec. 31st, 1904. No Revision
Correct as of Dec. 31st, 1903. No Revision	Correct as of Dec. 31st, 1903. Map Revised	Correct as of Dec. 31st, 1903. No Revision
Correct as of Dec. 31st, 1902. No Revision	Correct as of Dec. 31st, 1902. Map Revised	Correct as of Dec. 31st, 1902. No Revision
Correct as of Dec. 31st, 1901. No Revision	Correct as of Dec. 31st, 1901. Map Revised	Correct as of Dec. 31st, 1901. No Revision
Correct as of Dec. 31st, 1900. No Revision	Correct as of Dec. 31st, 1900. Map Revised	Correct as of Dec. 31st, 1900. No Revision

RIGHT OF WAY AND TRACK MAP
CLEVELAND, AKRON AND CINCINNATI RAILWAY
OPERATED BY THE
PENNSYLVANIA COMPANY
ZANESVILLE DIVISION
STATION 1530+50 TO STATION 1585+50
SCALE 1"=100'
JUNE 30, 1916
OFFICE OF VALUATION ENGINEER
PHILADELPHIA, PA.

V.310
OHIO
30

V.311
OHIO
30

V.11
OHIO
30

V.11A
OHIO
30

V.22
OHIO
30

V.22A
OHIO
30

V.11C
OHIO
30

V.11D
OHIO
30