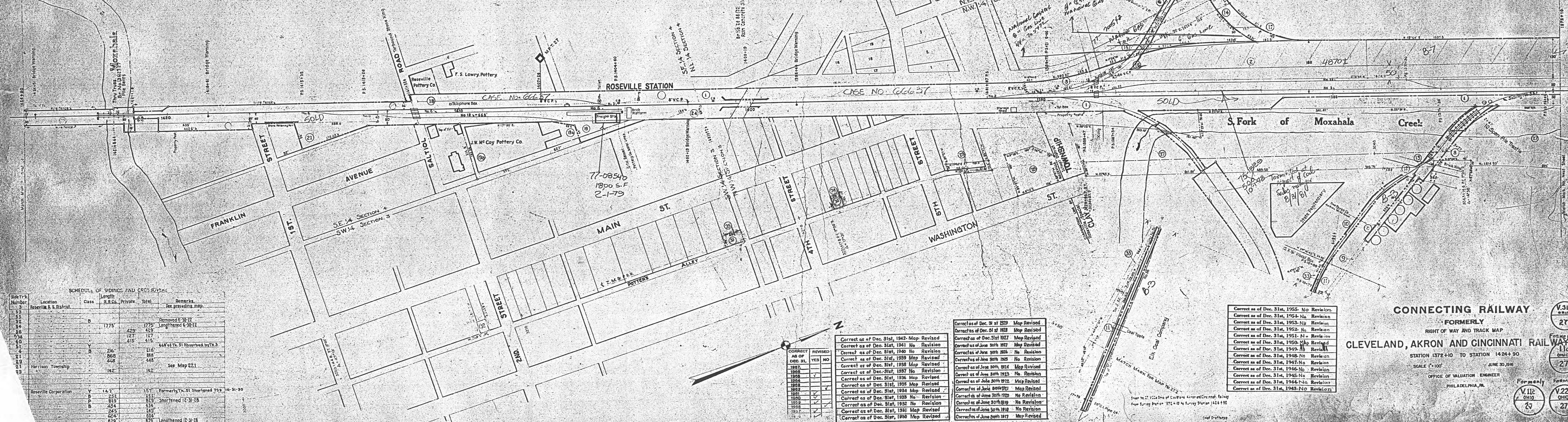


ROSEVILLE



SCHEDULE OF SIDINGS AND CROSSINGS

Side-tr. Number	Location	Class	Length R.R. Co. Private Total	Remarks
53	Roseville & District			See preceding map.
54		D	1775	Removed R-30-22
55			429	Lengthened 6-30-22
56			127	
57			415	
58				648 ft. N. St. Absorbed by R-3
59				
60				
61				
62				
63				
64				
65				
66				
67				
68				
69				
70				
71				
72				
73				
74				
75				
76				
77				
78				
79				
80				
81				
82				
83				
84				
85				
86				
87				
88				
89				
90				
91				
92				
93				
94				
95				
96				
97				
98				
99				
100				

CORRECT AS OF DEC. 31, 1917	REVISOR	YES	NO
1917			
1918			
1919			
1920			
1921			
1922			
1923			
1924			
1925			
1926			
1927			
1928			
1929			
1930			
1931			
1932			
1933			
1934			
1935			
1936			
1937			
1938			
1939			
1940			
1941			
1942			
1943			
1944			
1945			
1946			
1947			
1948			
1949			
1950			
1951			
1952			
1953			
1954			
1955			
1956			
1957			
1958			
1959			
1960			
1961			
1962			
1963			
1964			
1965			
1966			
1967			
1968			
1969			
1970			
1971			
1972			
1973			
1974			
1975			
1976			
1977			
1978			
1979			
1980			
1981			
1982			
1983			
1984			
1985			
1986			
1987			
1988			
1989			
1990			
1991			
1992			
1993			
1994			
1995			
1996			
1997			
1998			
1999			
2000			

CORRECT AS OF DEC. 31, 1917	REVISOR	YES	NO
1917			
1918			
1919			
1920			
1921			
1922			
1923			
1924			
1925			
1926			
1927			
1928			
1929			
1930			
1931			
1932			
1933			
1934			
1935			
1936			
1937			
1938			
1939			
1940			
1941			
1942			
1943			
1944			
1945			
1946			
1947			
1948			
1949			
1950			
1951			
1952			
1953			
1954			
1955			
1956			
1957			
1958			
1959			
1960			
1961			
1962			
1963			
1964			
1965			
1966			
1967			
1968			
1969			
1970			
1971			
1972			
1973			
1974			
1975			
1976			
1977			
1978			
1979			
1980			
1981			
1982			
1983			
1984			
1985			
1986			
1987			
1988			
1989			
1990			
1991			
1992			
1993			
1994			
1995			
1996			
1997			
1998			
1999			
2000			

CORRECT AS OF DEC. 31, 1917	REVISOR	YES	NO
1917			
1918			
1919			
1920			
1921			
1922			
1923			
1924			
1925			
1926			
1927			
1928			
1929			
1930			
1931			
1932			
1933			
1934			
1935			
1936			
1937			
1938			
1939			
1940			
1941			
1942			
1943			
1944			
1945			
1946			
1947			
1948			
1949			
1950			
1951			
1952			
1953			
1954			
1955			
1956			
1957			
1958			
1959			
1960			
1961			
1962			
1963			
1964			
1965			
1966			
1967			
1968			
1969			
1970			
1971			
1972			
1973			
1974			
1975			
1976			
1977			
1978			
1979			
1980			
1981			
1982			
1983			
1984			
1985			
1986			
1987			
1988			
1989			
1990			
1991			
1992			
1993			
1994			
1995			
1996			
1997			
1998			
1999			
2000			

CONNECTING RAILWAY
FORMERLY
RIGHT OF WAY AND TRACK MAP
CLEVELAND, AKRON AND CINCINNATI RAILWAY
STATION 1372+10 TO STATION 1424+90
SCALE 1"=100'
JUNE 30, 1915
OFFICE OF VALUATION ENGINEER
PHILADELPHIA, PA.

Correct as of Dec. 31st, 1915- No Revision
Correct as of Dec. 31st, 1916- No Revision
Correct as of Dec. 31st, 1917- No Revision
Correct as of Dec. 31st, 1918- No Revision
Correct as of Dec. 31st, 1919- No Revision
Correct as of Dec. 31st, 1920- No Revision
Correct as of Dec. 31st, 1921- No Revision
Correct as of Dec. 31st, 1922- No Revision
Correct as of Dec. 31st, 1923- No Revision
Correct as of Dec. 31st, 1924- No Revision
Correct as of Dec. 31st, 1925- No Revision
Correct as of Dec. 31st, 1926- No Revision
Correct as of Dec. 31st, 1927- No Revision
Correct as of Dec. 31st, 1928- No Revision
Correct as of Dec. 31st, 1929- No Revision
Correct as of Dec. 31st, 1930- No Revision
Correct as of Dec. 31st, 1931- No Revision
Correct as of Dec. 31st, 1932- No Revision
Correct as of Dec. 31st, 1933- No Revision
Correct as of Dec. 31st, 1934- No Revision
Correct as of Dec. 31st, 1935- No Revision
Correct as of Dec. 31st, 1936- No Revision
Correct as of Dec. 31st, 1937- No Revision
Correct as of Dec. 31st, 1938- No Revision
Correct as of Dec. 31st, 1939- No Revision
Correct as of Dec. 31st, 1940- No Revision
Correct as of Dec. 31st, 1941- No Revision
Correct as of Dec. 31st, 1942- No Revision
Correct as of Dec. 31st, 1943- No Revision
Correct as of Dec. 31st, 1944- No Revision
Correct as of Dec. 31st, 1945- No Revision
Correct as of Dec. 31st, 1946- No Revision
Correct as of Dec. 31st, 1947- No Revision
Correct as of Dec. 31st, 1948- No Revision
Correct as of Dec. 31st, 1949- No Revision
Correct as of Dec. 31st, 1950- No Revision
Correct as of Dec. 31st, 1951- No Revision
Correct as of Dec. 31st, 1952- No Revision
Correct as of Dec. 31st, 1953- No Revision
Correct as of Dec. 31st, 1954- No Revision
Correct as of Dec. 31st, 1955- No Revision
Correct as of Dec. 31st, 1956- No Revision
Correct as of Dec. 31st, 1957- No Revision
Correct as of Dec. 31st, 1958- No Revision
Correct as of Dec. 31st, 1959- No Revision
Correct as of Dec. 31st, 1960- No Revision
Correct as of Dec. 31st, 1961- No Revision
Correct as of Dec. 31st, 1962- No Revision
Correct as of Dec. 31st, 1963- No Revision
Correct as of Dec. 31st, 1964- No Revision
Correct as of Dec. 31st, 1965- No Revision
Correct as of Dec. 31st, 1966- No Revision
Correct as of Dec. 31st, 1967- No Revision
Correct as of Dec. 31st, 1968- No Revision
Correct as of Dec. 31st, 1969- No Revision
Correct as of Dec. 31st, 1970- No Revision
Correct as of Dec. 31st, 1971- No Revision
Correct as of Dec. 31st, 1972- No Revision
Correct as of Dec. 31st, 1973- No Revision
Correct as of Dec. 31st, 1974- No Revision
Correct as of Dec. 31st, 1975- No Revision
Correct as of Dec. 31st, 1976- No Revision
Correct as of Dec. 31st, 1977- No Revision
Correct as of Dec. 31st, 1978- No Revision
Correct as of Dec. 31st, 1979- No Revision
Correct as of Dec. 31st, 1980- No Revision
Correct as of Dec. 31st, 1981- No Revision
Correct as of Dec. 31st, 1982- No Revision
Correct as of Dec. 31st, 1983- No Revision
Correct as of Dec. 31st, 1984- No Revision
Correct as of Dec. 31st, 1985- No Revision
Correct as of Dec. 31st, 1986- No Revision
Correct as of Dec. 31st, 1987- No Revision
Correct as of Dec. 31st, 1988- No Revision
Correct as of Dec. 31st, 1989- No Revision
Correct as of Dec. 31st, 1990- No Revision
Correct as of Dec. 31st, 1991- No Revision
Correct as of Dec. 31st, 1992- No Revision
Correct as of Dec. 31st, 1993- No Revision
Correct as of Dec. 31st, 1994- No Revision
Correct as of Dec. 31st, 1995- No Revision
Correct as of Dec. 31st, 1996- No Revision
Correct as of Dec. 31st, 1997- No Revision
Correct as of Dec. 31st, 1998- No Revision
Correct as of Dec. 31st, 1999- No Revision
Correct as of Dec. 31st, 2000- No Revision