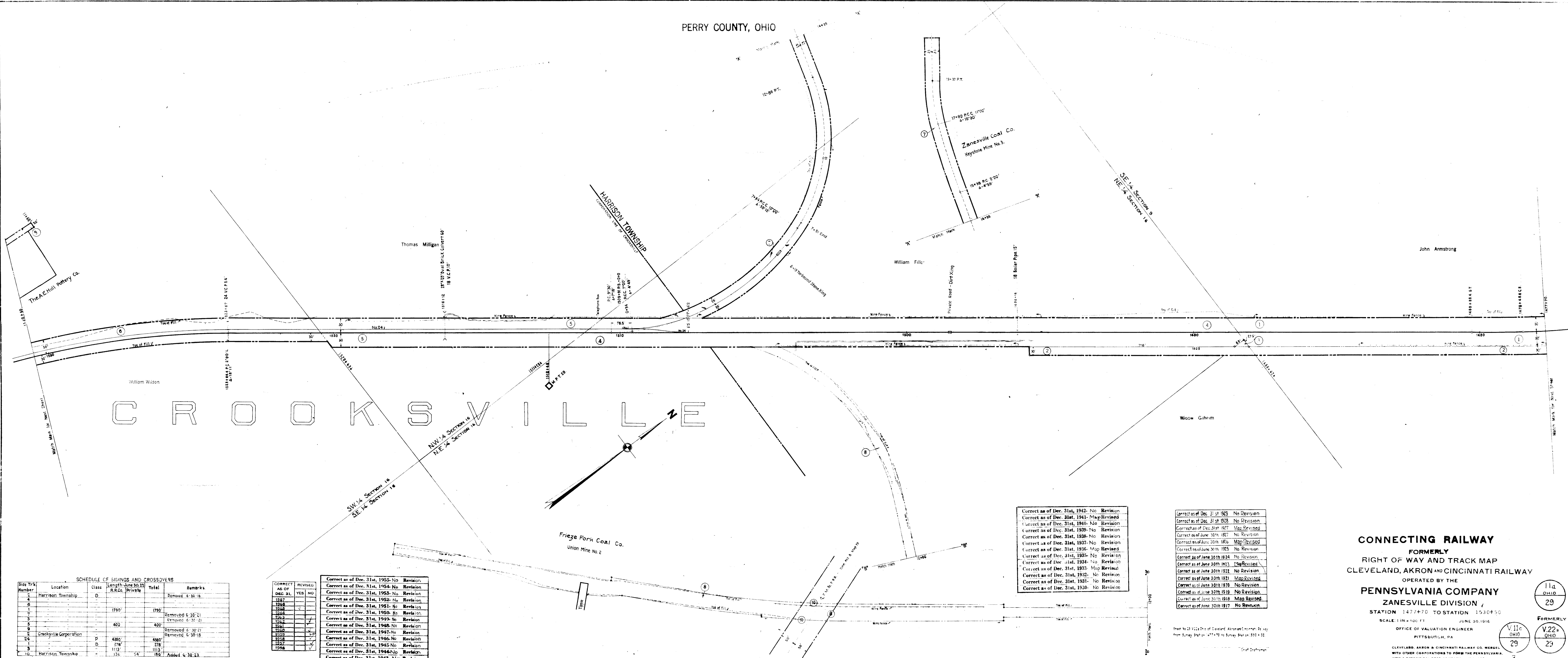


PERRY COUNTY, OHIO



**SCHEDULE OF SIDINGS AND CROSSOVERS**

| Side Trk. Number | Location                | Class | Length June 30, 21 | Total   | Remarks            |
|------------------|-------------------------|-------|--------------------|---------|--------------------|
|                  |                         |       | R.R.Co.            | Private |                    |
| 2                | Harrison Township       | D     |                    |         | Removed 6-30-18.   |
| 4                |                         |       |                    |         |                    |
| 6                |                         |       |                    |         |                    |
| 1                |                         |       | 1790'              | 1790'   | Removed 6-30-21    |
| 7                |                         |       |                    |         | Removed 6-30-21    |
| 3                |                         |       |                    |         |                    |
| 5                |                         |       | 400'               | 400'    |                    |
| 9                |                         |       |                    |         | Removed 6-30-21    |
| 2                | Crooksville Corporation | P     | 4380'              | 4380'   | Removed 6-30-18.   |
| 1                |                         | B     | 278'               | 278'    |                    |
| 3                |                         | B     | 1113'              | 1113'   |                    |
| 10               | Harrison Township       |       | 136'               | 54'     | 180' Added 6-30-23 |

| CORRECT AS OF DEC. 31, | REVISED |    |
|------------------------|---------|----|
|                        | YES     | NO |
| 1927                   |         |    |
| 1928                   |         |    |
| 1929                   | ✓       |    |
| 1930                   |         |    |
| 1931                   | ✓       |    |
| 1932                   |         |    |
| 1933                   | ✓       |    |
| 1934                   |         |    |
| 1935                   | ✓       |    |
| 1936                   |         |    |
| 1937                   |         |    |
| 1938                   |         |    |
| 1939                   |         |    |
| 1940                   |         |    |
| 1941                   |         |    |
| 1942                   |         |    |
| 1943                   |         |    |
| 1944                   |         |    |
| 1945                   |         |    |
| 1946                   |         |    |
| 1947                   |         |    |
| 1948                   |         |    |
| 1949                   |         |    |
| 1950                   |         |    |
| 1951                   |         |    |
| 1952                   |         |    |
| 1953                   |         |    |
| 1954                   |         |    |
| 1955                   |         |    |

|  |
|--|
| Correct as of Dec. 31st, 1955- No Revision |
| Correct as of Dec. 31st, 1954- No Revision |
| Correct as of Dec. 31st, 1953- No Revision |
| Correct as of Dec. 31st, 1952- No Revision |
| Correct as of Dec. 31st, 1951- No Revision |
| Correct as of Dec. 31st, 1950- No Revision |
| Correct as of Dec. 31st, 1949- No Revision |
| Correct as of Dec. 31st, 1948- No Revision |
| Correct as of Dec. 31st, 1947- No Revision |
| Correct as of Dec. 31st, 1946- No Revision |
| Correct as of Dec. 31st, 1945- No Revision |
| Correct as of Dec. 31st, 1944- No Revision |
| Correct as of Dec. 31st, 1943- No Revision |

|  |
|--|
| Correct as of Dec. 31st, 1942- No Revision |
| Correct as of Dec. 31st, 1941- Map Revised |
| Correct as of Dec. 31st, 1940- No Revision |
| Correct as of Dec. 31st, 1939- No Revision |
| Correct as of Dec. 31st, 1938- No Revision |
| Correct as of Dec. 31st, 1937- No Revision |
| Correct as of Dec. 31st, 1936- Map Revised |
| Correct as of Dec. 31st, 1935- No Revision |
| Correct as of Dec. 31st, 1934- No Revision |
| Correct as of Dec. 31st, 1933- Map Revised |
| Correct as of Dec. 31st, 1932- No Revision |
| Correct as of Dec. 31st, 1931- No Revision |
| Correct as of Dec. 31st, 1930- No Revision |

|   |
|---|
| Correct as of Dec. 31st 1929- No Revision |
| Correct as of Dec. 31st 1928- No Revision |
| Correct as of Dec. 31st 1927- Map Revised |
| Correct as of Dec. 31st 1926- No Revision |
| Correct as of June 30th 1925- Map Revised |
| Correct as of June 30th 1924- No Revision |
| Correct as of June 30th 1923- Map Revised |
| Correct as of June 30th 1922- No Revision |
| Correct as of June 30th 1921- Map Revised |
| Correct as of June 30th 1920- No Revision |
| Correct as of June 30th 1919- No Revision |
| Correct as of June 30th 1918- Map Revised |
| Correct as of June 30th 1917- No Revision |

Sheet No. 29 of 29 of Cleveland, Akron and Cincinnati Railway  
 from Survey Map No. 177-79 to Survey Section 1854-85

**CONNECTING RAILWAY**  
 FORMERLY  
 RIGHT OF WAY AND TRACK MAP  
 CLEVELAND, AKRON AND CINCINNATI RAILWAY  
 OPERATED BY THE  
**PENNSYLVANIA COMPANY**  
 ZANESVILLE DIVISION  
 STATION 1477+70 TO STATION 1530+50  
 SCALE: 1 IN. = 100 FT. JUNE 30, 1916  
 OFFICE OF VALUATION ENGINEER  
 PITTSBURGH, PA.

11a OHIO 29  
 FORMERLY  
 V.11c OHIO 29  
 V.22a OHIO 29  
 CLEVELAND, AKRON & CINCINNATI RAILWAY CO. MERGED WITH OTHER CORPORATIONS TO FORM THE PENNSYLVANIA, OHIO & DETROIT RAILROAD COMPANY JULY 1, 1924  
 3