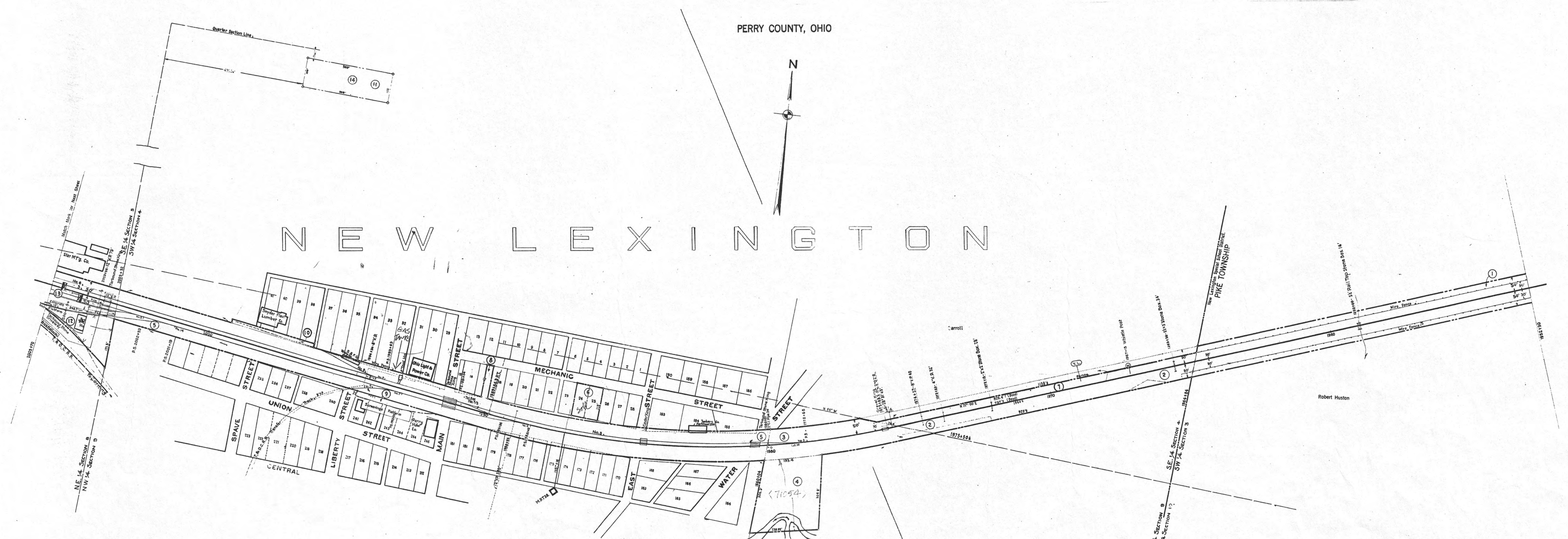


PERRY COUNTY, OHIO



NEW LEXINGTON



Trackage Rts. granted to N.Y.C. & P.R., also joint switching performed by P.R.R., also a pickup and set off track for N.Y.C.
New Lexington to Wilbren 2.58 Miles
See Joint Agt. Plan 56 A
Comptroller's Agt. Nos. 5149, 5149-1 N.Y.C. 5149-2

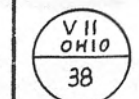
REVISION	DATE	BY	NO.
1927			
1928			
1929			
1930			
1931			
1932			
1933			
1934			
1935			
1936			
1937			
1938			
1939			
1940			
1941			
1942			
1943			
1944			
1945			
1946			
1947			
1948			
1949			
1950			
1951			
1952			
1953			
1954			
1955			
1956			
1957			
1958			
1959			
1960			
1961			
1962			
1963			
1964			
1965			
1966			
1967			
1968			
1969			
1970			
1971			
1972			
1973			
1974			
1975			
1976			
1977			
1978			
1979			
1980			
1981			
1982			
1983			
1984			
1985			
1986			
1987			
1988			
1989			
1990			
1991			
1992			
1993			
1994			
1995			
1996			
1997			
1998			
1999			
2000			

Correct as of Dec. 31st, 1955: No Revision
 Correct as of Dec. 31st, 1954: No Revision
 Correct as of Dec. 31st, 1953: No Revision
 Correct as of Dec. 31st, 1952: No Revision
 Correct as of Dec. 31st, 1951: No Revision
 Correct as of Dec. 31st, 1950: No Revision
 Correct as of Dec. 31st, 1949: No Revision
 Correct as of Dec. 31st, 1948: No Revision
 Correct as of Dec. 31st, 1947: No Revision
 Correct as of Dec. 31st, 1946: No Revision
 Correct as of Dec. 31st, 1945: No Revision
 Correct as of Dec. 31st, 1944: No Revision
 Correct as of Dec. 31st, 1943: No Revision

Correct as of Dec. 31st, 1942: Map Revised
 Correct as of Dec. 31st, 1941: No Revision
 Correct as of Dec. 31st, 1940: No Revision
 Correct as of Dec. 31st, 1939: No Revision
 Correct as of Dec. 31st, 1938: No Revision
 Correct as of Dec. 31st, 1937: No Revision
 Correct as of Dec. 31st, 1936: Map Revised
 Correct as of Dec. 31st, 1935: No Revision
 Correct as of Dec. 31st, 1934: Map Revised
 Correct as of Dec. 31st, 1933: No Revision
 Correct as of Dec. 31st, 1932: No Revision
 Correct as of Dec. 31st, 1931: Map Revised
 Correct as of Dec. 31st, 1930: No Revision

Correct as of Dec. 31st 1929: No Revision
 Correct as of Dec. 31st 1928: Map Revised
 Correct as of Dec. 31st 1927: No Revision
 Correct as of Dec. 31st 1926: No Revision
 Correct as of Dec. 31st 1925: Map Revised
 Correct as of Dec. 31st 1924: No Revision
 Correct as of Dec. 31st 1923: No Revision
 Correct as of Dec. 31st 1922: No Revision
 Correct as of Dec. 31st 1921: No Revision
 Correct as of Dec. 31st 1920: No Revision
 Correct as of Dec. 31st 1919: Map Revised
 Correct as of Dec. 31st 1918: Map Revised

8135028



CONNECTING RAILWAY
 FORMERLY
 RIGHT OF WAY AND TRACK MAP
 CLEVELAND, AKRON AND CINCINNATI RAILWAY
 OPERATED BY THE
PENNSYLVANIA COMPANY
 ZANESVILLE DIVISION
 STATION 1952+90 TO STATION 2005+70
 SCALE: 1 IN. = 100 FT. JUNE 30, 1916.
 OFFICE OF VALUATION ENGINEER
 PITTSBURGH, PA.



CLEVELAND, AKRON & CINCINNATI RAILWAY CO. MERGED WITH OTHER CORPORATIONS TO FORM THE PENNSYLVANIA OHIO & DETROIT RAILROAD COMPANY JULY 1, 1924

000 3846 11/22/16 12 0120 110 777-292