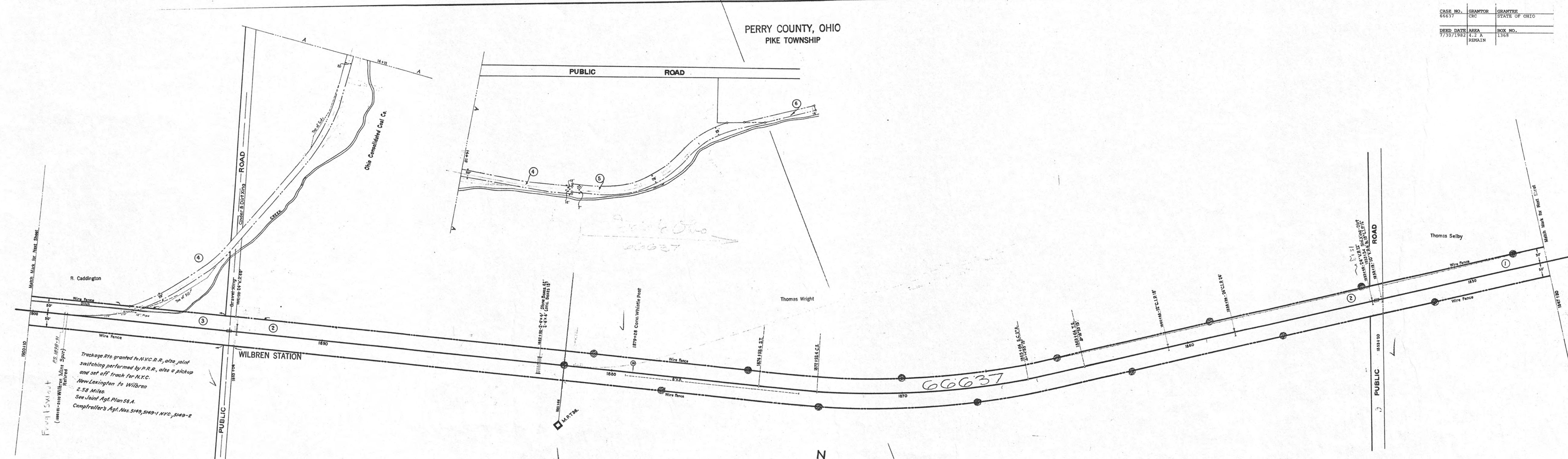


CASE NO.	GRANTOR	GRANTEE
66637	CRC	STATE OF OHIO
DEED DATE	AREA	BOX NO.
7/30/1932	4-2-A	1368
	PARCEL	

PERRY COUNTY, OHIO
PIKE TOWNSHIP



Trackage Rts granted to N.K.C.R.R. also joint switching performed by P.R.R. also a pickup and set off track for N.K.C. New Lexington to Wilbren 2.58 Miles. See Joint Agt. Plan 55A. Comptrollers' Agt. Nos. 5149, 5149-1, NYC, 5149-2

8135026

VII OHIO 36

Side Trk. Number	Location	Class	Length	Area	Total	Remarks
1	Pike Township	B	22.74	184.0	227.0	
2				5.1	5.1	
3				5.1	5.1	Removed 6-30-22
4				2.24	2.24	Added 6-30-22
5				1.53	1.53	Added 6-30-22
6				6.00	6.00	
7				6.00	6.00	

Correct as of Dec. 31st, 1956- No Revision
Correct as of Dec. 31st, 1954- No Revision
Correct as of Dec. 31st, 1952- No Revision
Correct as of Dec. 31st, 1951- No Revision
Correct as of Dec. 31st, 1950- No Revision
Correct as of Dec. 31st, 1949- No Revision
Correct as of Dec. 31st, 1948- No Revision
Correct as of Dec. 31st, 1947- No Revision
Correct as of Dec. 31st, 1946- No Revision
Correct as of Dec. 31st, 1945- No Revision
Correct as of Dec. 31st, 1944- Map Revised
Correct as of Dec. 31st, 1943- Map Revised



Correct as of Dec. 31st, 1942- No Revision
Correct as of Dec. 31st, 1941- No Revision
Correct as of Dec. 31st, 1940- No Revision
Correct as of Dec. 31st, 1938- No Revision
Correct as of Dec. 31st, 1937- No Revision
Correct as of Dec. 31st, 1936- Map Revised
Correct as of Dec. 31st, 1935- No Revision
Correct as of Dec. 31st, 1934- Map Revised
Correct as of Dec. 31st, 1933- No Revision
Correct as of Dec. 31st, 1932- No Revision
Correct as of Dec. 31st, 1931- No Revision
Correct as of Dec. 31st, 1930- No Revision

Correct as of Dec. 31st 1929- No Revision
Correct as of Dec. 31st 1928- No Revision
Correct as of Dec. 31st 1927- No Revision
Correct as of Dec. 31st 1926- No Revision
Correct as of Dec. 31st 1925- No Revision
Correct as of Dec. 31st 1924- No Revision
Correct as of Dec. 31st 1923- No Revision
Correct as of Dec. 31st 1922- No Revision
Correct as of Dec. 31st 1921- No Revision
Correct as of Dec. 31st 1920- No Revision

Sheet No. 14, 15, 16 of Cleveland, Akron and Cincinnati Railway from Survey Station 1847+30 to Survey Station 1924+10.

CONNECTING RAILWAY
FORMERLY
RIGHT OF WAY AND TRACK MAP
CLEVELAND, AKRON AND CINCINNATI RAILWAY
OPERATED BY THE
PENNSYLVANIA COMPANY
ZANESVILLE DIVISION
STATION 1847+30 TO STATION 1924+10
SCALE: 1 IN. = 100 FT. JUNE 30, 1916
OFFICE OF VALUATION ENGINEER
PITTSBURGH, PA.
CLEVELAND, AKRON & CINCINNATI RAILWAY CO. BEHELD
WITH OTHER COOPERATORS TO FORM THE PENNSYLVANIA,
OHIO & DETROIT RAILROAD COMPANY JULY 1, 1924

M1
F 34

VII OHIO 36

FORMERLY
V22 OHIO 36