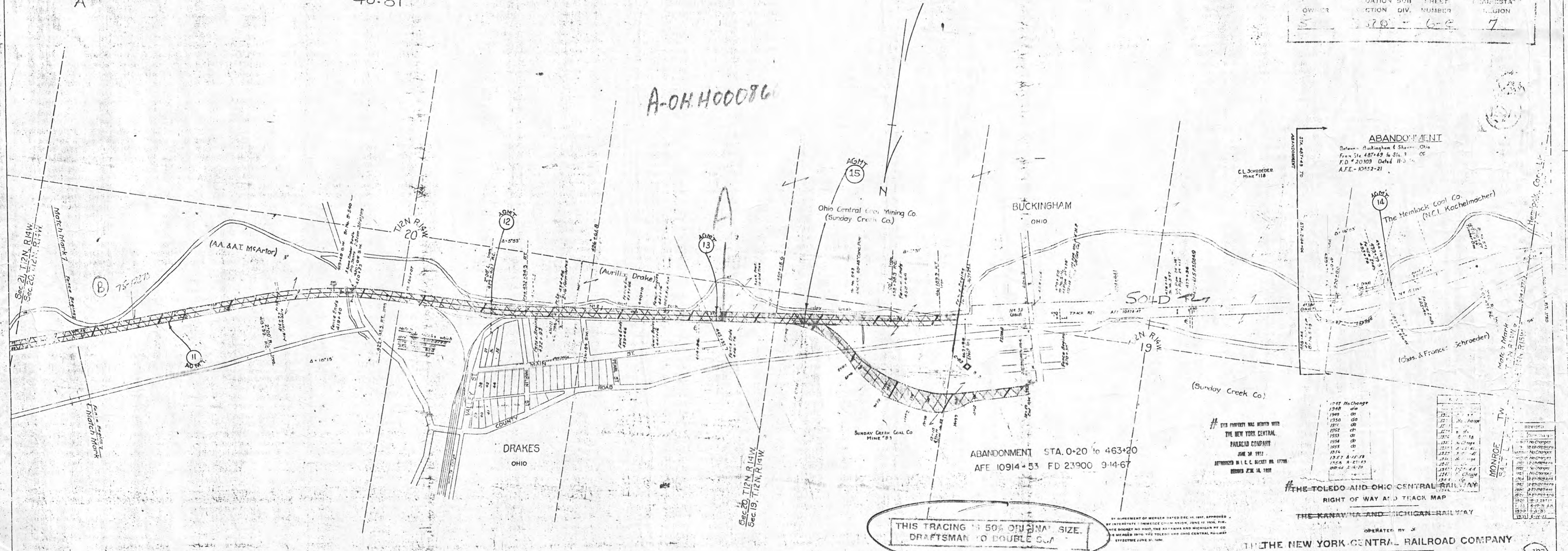


Row A = 13.73 ACRES THIS MAP 48.81 TOTAL

OWNER	VALUATION DIVISION	SUBDIVISION NUMBER	SHEET NUMBER	PLAT	SECTION
	370		6-9		7



ABANDONMENT STA. 0+20 to 463+20
 AFE 10914+53 FD 23900 9-14-67

THIS TRACING IS 50% ORIGINAL SIZE.
 DRAFTSMAN TO DOUBLE SIZE

THIS PROPERTY WAS MERGED WITH
 THE NEW YORK CENTRAL
 RAILROAD COMPANY
 JUNE 30 1957
 AUTHORIZED BY U.S.C. ROCKETT BILL 17708
 ISSUED APRIL 14 1958

Year	Description	Amount
1947	No Change	
1948	do	
1949	do	
1950	do	
1951	do	
1952	do	
1953	do	
1954	do	
1955	do	
1956	do	
1957	do	
1958	do	
1959	do	
1960	do	
1961	do	
1962	do	
1963	do	
1964	do	
1965	do	
1966	do	
1967	do	
1968	do	
1969	do	
1970	do	
1971	do	
1972	do	
1973	do	
1974	do	
1975	do	
1976	do	
1977	do	
1978	do	
1979	do	
1980	do	
1981	do	
1982	do	
1983	do	
1984	do	
1985	do	
1986	do	
1987	do	
1988	do	
1989	do	
1990	do	
1991	do	
1992	do	
1993	do	
1994	do	
1995	do	
1996	do	
1997	do	
1998	do	
1999	do	
2000	do	

No.	Grantor	Grantee	Instrument	Date	Record	Dist. No.	Remarks
1	No paper title found. Held by adverse possession and claimed by Ry Co					641	This parcel is a part of Parcel No 2, Map 12
2	See paper title found. Held by adverse possession and claimed by Ry Co					642	
3	The Ohio Central R & O Ry Co	Q.C. Deed	Nov 10, 1897	DB 735 P407	2-21	2-21	
4	Coal Mining Co	Q.C. Deed	May 4, 1898	DB 735 P407	2-21	2-21	Transferred to K.M.R. Ry Co. Dec 31, 1898
5	Coal Mining Co	Q.C. Deed	May 4, 1898	DB 735 P407	2-21	2-21	Transferred to K.M.R. Ry Co. Dec 31, 1898
6	Coal Mining Co	Q.C. Deed	May 4, 1898	DB 735 P407	2-21	2-21	Transferred to K.M.R. Ry Co. Dec 31, 1898
7	Joseph P. Semmes et al	W. Deed	May 19, 1926	DB VIOT P 57	June 16, 1926	1127	Completion Report No. K.M.R. 34.N

PERRY COUNTY
 MONROE TOWNSHIP
 SALT LICK TOWNSHIP

OPERATED BY
 THE NEW YORK CENTRAL RAILROAD COMPANY

BUCKINGHAM BRANCH
 FROM STATION 400+00 TO STATION 504+37.1
 SCALE 1 INCH = 200 FEET
 OFFICE OF VALUATION ENGINEER COLUMBUS OHIO
 JUNE 30, 1918

OPERATED BY THE NEW YORK CENTRAL RAILROAD COMPANY SUBSEQUENT TO DECEMBER 31, 1921

307 B
 A-18-1-15