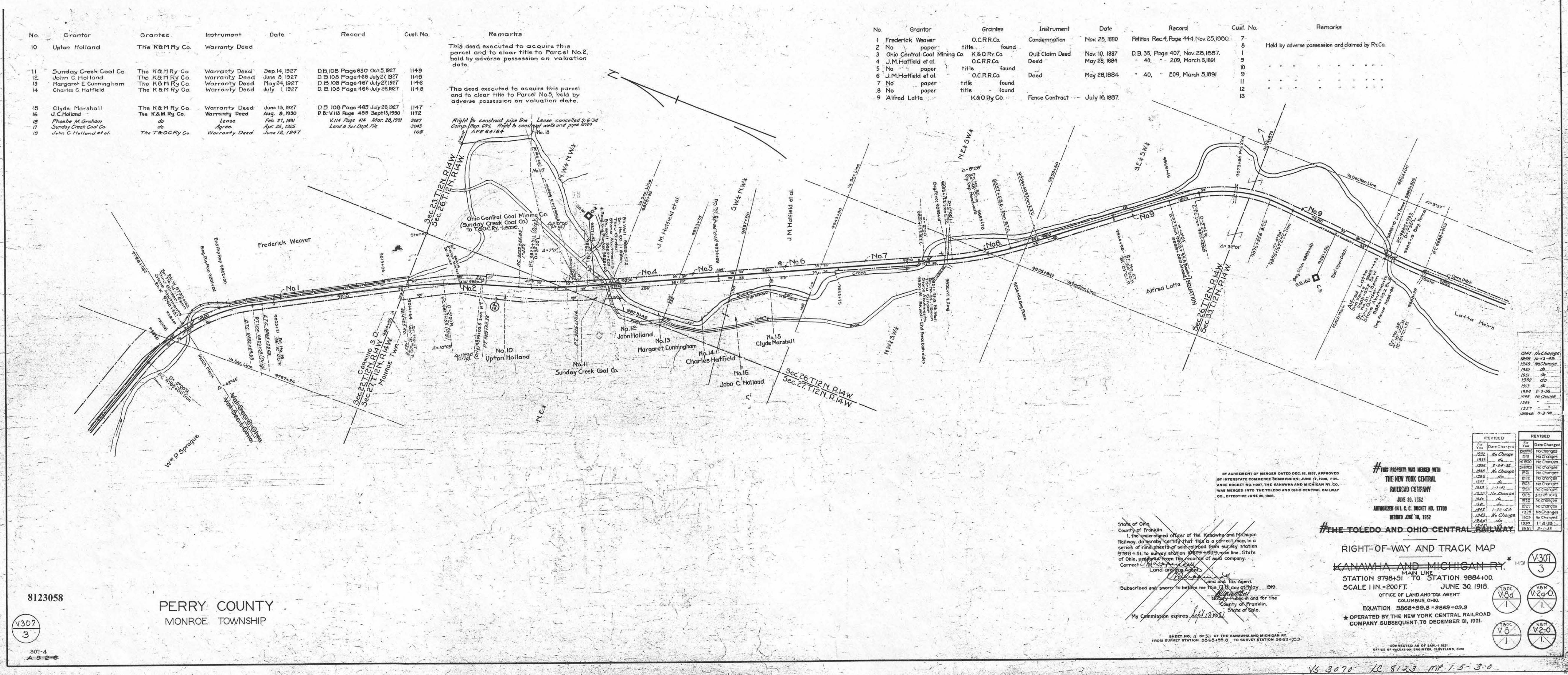


No.	Grantor	Grantee	Instrument	Date	Record	Cust. No.	Remarks
10	Upton Holland	The K&M Ry Co.	Warranty Deed				This deed executed to acquire this parcel and to clear title to Parcel No. 2, held by adverse possession on valuation date.
11	Sunday Creek Coal Co.	The K&M Ry Co.	Warranty Deed	Sep 14, 1927	D.B. 108 Page 630 Oct 3, 1927	1149	
12	John C. Holland	The K&M Ry Co.	Warranty Deed	June 8, 1927	D.B. 108 Page 466 July 27, 1927	1145	
13	Margaret C. Cunningham	The K&M Ry Co.	Warranty Deed	May 24, 1927	D.B. 108 Page 467 July 27, 1927	1146	
14	Charles C. Hatfield	The K&M Ry Co.	Warranty Deed	July 1, 1927	D.B. 108 Page 466 July 26, 1927	1146	
15	Clyde Marshall	The K&M Ry Co.	Warranty Deed	June 13, 1927	D.B. 108 Page 465 July 26, 1927	1147	
16	J.C. Holland	The K&M Ry Co.	Warranty Deed	Aug. 8, 1930	D.B. V 113 Page 459 Sept 15, 1930	1172	
18	Phoebe M. Graham	do	Lease	Feb. 27, 1931	K 114 Page 418 Mar. 28, 1931	3067	
17	Sunday Creek Coal Co.	do	Agree.	Apr. 25, 1925	Land & Tax Dept. file	3043	
19	John C. Holland et al.	The T&O CRY Co.	Warranty Deed	June 12, 1947		105	

No.	Grantor	Grantee	Instrument	Date	Record	Cust. No.	Remarks
1	Frederick Weaver	O.C.R.R. Co.	Condemnation	Nov. 25, 1880	Partition Rec. 4, Page 444, Nov. 25, 1880.	7	
2	No.	paper	title found			8	Held by adverse possession and claimed by Ry Co.
3	Ohio Central Coal Mining Co.	K&O Ry Co.	Quit Claim Deed	Nov. 10, 1887	D.B. 35, Page 407, Nov. 20, 1887.	1	
4	J.M. Hatfield et al.	O.C.R.R. Co.	Deed	May 28, 1884	40, 209, March 5, 1891	9	
5	No.	paper	title found			10	
6	J.M. Hatfield et al.	O.C.R.R. Co.	Deed	May 28, 1884	40, 209, March 5, 1891	11	
7	No.	paper	title found			12	
8	No.	paper	title found			13	
9	Alfred Latta	K&O Ry Co.	Fence Contract	July 16, 1887			



Year	Change
1887	No Change
1888	No Change
1889	No Change
1890	No Change
1891	No Change
1892	No Change
1893	No Change
1894	No Change
1895	No Change
1896	No Change
1897	No Change
1898	No Change
1899	No Change
1900	No Change

Year	Date Change	Change
1901	No Change	No Change
1902	No Change	No Change
1903	No Change	No Change
1904	No Change	No Change
1905	No Change	No Change
1906	No Change	No Change
1907	No Change	No Change
1908	No Change	No Change
1909	No Change	No Change
1910	No Change	No Change
1911	No Change	No Change
1912	No Change	No Change
1913	No Change	No Change
1914	No Change	No Change
1915	No Change	No Change
1916	No Change	No Change
1917	No Change	No Change
1918	No Change	No Change
1919	No Change	No Change
1920	No Change	No Change

BY AGREEMENT OF BENDER DATED DEC. 16, 1907, APPROVED BY INTERSTATE COMMERCE COMMISSION, JUNE 17, 1908, THE ANGE DOCKET NO. 1007, THE KANAWHA AND MICHIGAN RY. CO. WAS MERGED INTO THE TOLEDO AND OHIO CENTRAL RAILWAY CO. EFFECTIVE JUNE 30, 1908.

THIS PROPERTY WAS MERGED WITH THE NEW YORK CENTRAL RAILROAD COMPANY JUNE 10, 1952 AUTHORIZED IN L.C. DOCKET NO. 17708 RECORDED JUNE 18, 1952

State of Ohio, County of Franklin. I, the undersigned officer of the Kanawha and Michigan Railway, do hereby certify that this is a correct map, in a series of nine sheets of said railroad from survey station 8798+51 to survey station 9884+00, main line, State of Ohio, prepared from the records of said company. Corrected by me on this 11th day of July, 1919. My Commission expires July 1, 1921.

THE TOLEDO AND OHIO CENTRAL RAILWAY
RIGHT-OF-WAY AND TRACK MAP
KANAWHA AND MICHIGAN RY.
STATION 9798+51 TO STATION 9884+00
SCALE 1 IN. = 200 FT. JUNE 30, 1918.
OFFICE OF LAND AND TAX AGENT
COLUMBUS, OHIO.
EQUATION 9868+99.8 = 9869+09.9
* OPERATED BY THE NEW YORK CENTRAL RAILROAD COMPANY SUBSEQUENT TO DECEMBER 31, 1921.

8123058
PERRY COUNTY
MONROE TOWNSHIP

V307
3

V307
3
V2a-0
V2b-0
V2c-0
V2d-0

SHEET NO. 2 OF 5 OF THE KANAWHA AND MICHIGAN RY. FROM SURVEY STATION 8660+00.8 TO SURVEY STATION 8810+00.8

CORRECTED AS OF JAN. 1, 1921
OFFICE OF EQUATION ENGINEER, CLEVELAND, OHIO

V6 3070 LC 8123 MP 1-5-3-0