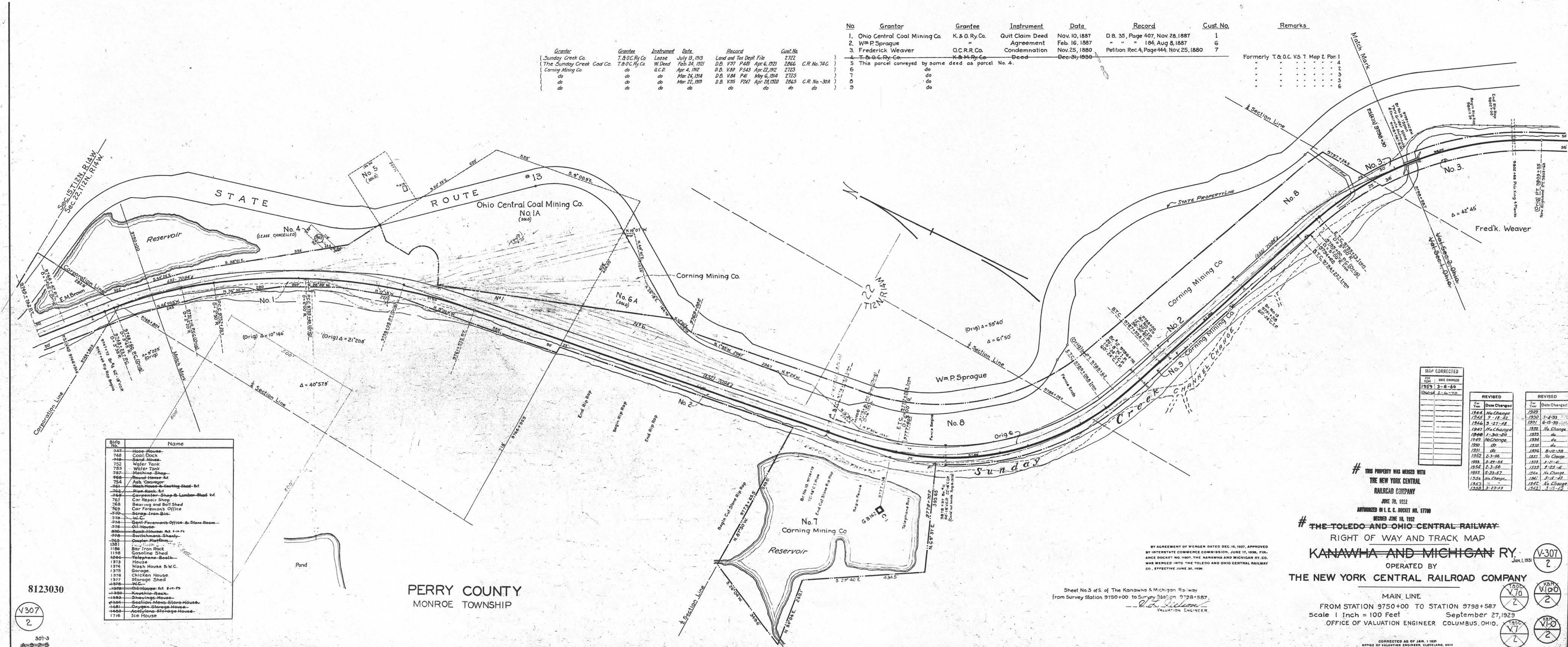


No.	Grantor	Grantee	Instrument	Date	Record	Cust. No.	Remarks
1.	Ohio Central Coal Mining Co.	K. & O. Ry. Co.	Quit Claim Deed	Nov. 10, 1887	D. B. 35, Page 407, Nov. 28, 1887	1	
2.	Wm P Sprague	"	Agreement	Feb. 16, 1887	" " " 184, Aug 8, 1887	6	
3.	Frederick Weaver	O.C.R.R. Co.	Condemnation	Nov. 25, 1880	Petition Rec. 4, Page 444, Nov. 25, 1880	7	
4.	T. & O. C. Ry. Co.	K. & O. Ry. Co.	Deed	Dec. 31, 1880			
5.	This parcel conveyed by some deed as parcel No. 4.						
6.	do	do	do	do	do	do	Formerly T. & O. C. V.S. T. Map 2, Par. 1
7.	do	do	do	do	do	do	
8.	do	do	do	do	do	do	
9.	do	do	do	do	do	do	

Grantor	Grantee	Instrument	Date	Record	Cust. No.
Sunday Creek Co.	T. & O. C. Ry. Co.	Lease	July 15, 1903	Land and Tax Dept. File 2722	
The Sunday Creek Coal Co.	T. & O. C. Ry. Co.	W. Deed	Feb. 24, 1921	D. B. 1971 P. 481 Apr. 6, 1921	2866 C.R. No. 74G
do	do	G.C.D.	Apr. 4, 1912	D. B. 1189 P. 543 Apr. 22, 1912	2723
do	do	do	Mar. 24, 1914	D. B. 1184 P. 41 May 6, 1914	2725
do	do	do	Mar. 22, 1920	D. B. 1551 P. 617 Apr. 11, 1920	2865 C.R. No. 30A
do	do	do	do	do	do



No.	Name
243	House
244	Coal Dock
245	Coal House
246	Water Tank
247	Water Tank
248	Machine Shop
249	Blacksmith Shop
250	Blacksmith Shop
251	Blacksmith Shop
252	Blacksmith Shop
253	Blacksmith Shop
254	Blacksmith Shop
255	Blacksmith Shop
256	Blacksmith Shop
257	Blacksmith Shop
258	Blacksmith Shop
259	Blacksmith Shop
260	Blacksmith Shop
261	Blacksmith Shop
262	Blacksmith Shop
263	Blacksmith Shop
264	Blacksmith Shop
265	Blacksmith Shop
266	Blacksmith Shop
267	Blacksmith Shop
268	Blacksmith Shop
269	Blacksmith Shop
270	Blacksmith Shop
271	Blacksmith Shop
272	Blacksmith Shop
273	Blacksmith Shop
274	Blacksmith Shop
275	Blacksmith Shop
276	Blacksmith Shop
277	Blacksmith Shop
278	Blacksmith Shop
279	Blacksmith Shop
280	Blacksmith Shop
281	Blacksmith Shop
282	Blacksmith Shop
283	Blacksmith Shop
284	Blacksmith Shop
285	Blacksmith Shop
286	Blacksmith Shop
287	Blacksmith Shop
288	Blacksmith Shop
289	Blacksmith Shop
290	Blacksmith Shop
291	Blacksmith Shop
292	Blacksmith Shop
293	Blacksmith Shop
294	Blacksmith Shop
295	Blacksmith Shop
296	Blacksmith Shop
297	Blacksmith Shop
298	Blacksmith Shop
299	Blacksmith Shop
300	Blacksmith Shop

REVISED	REVISED
No.	Date Changed
1884	No Change
1885	No Change
1886	No Change
1887	No Change
1888	No Change
1889	No Change
1890	No Change
1891	No Change
1892	No Change
1893	No Change
1894	No Change
1895	No Change
1896	No Change
1897	No Change
1898	No Change
1899	No Change
1900	No Change
1901	No Change
1902	No Change
1903	No Change
1904	No Change
1905	No Change
1906	No Change
1907	No Change
1908	No Change
1909	No Change
1910	No Change
1911	No Change
1912	No Change
1913	No Change
1914	No Change
1915	No Change
1916	No Change
1917	No Change
1918	No Change
1919	No Change
1920	No Change

8123030
V-307
2

PERRY COUNTY
MONROE TOWNSHIP

Sheet No. 3 of 5 of The Kanawha & Michigan Railway
from Survey Station 9750+00 to Survey Station 9798+587
BY AGREEMENT OF WENGER DATED DEC. 15, 1921, APPROVED BY INTERSTATE COMMERCE COMMISSION, JUNE 17, 1926, FIN- AND SHEDLEY HAS THE HARRISON AND BECKER BY CO. WAS MERGED INTO THE TOLEDO AND OHIO CENTRAL RAILWAY CO. EFFECTIVE JUNE 30, 1926.

THIS PROPERTY WAS MERGED WITH
THE NEW YORK CENTRAL
RAILROAD COMPANY
JUNE 30, 1922
AUTHORIZED BY I. C. C. ORDER NO. 17700
ISSUED JUNE 18, 1922

THE TOLEDO AND OHIO CENTRAL RAILWAY
RIGHT OF WAY AND TRACK MAP
KANAWHA AND MICHIGAN RY.
OPERATED BY
THE NEW YORK CENTRAL RAILROAD COMPANY

MAIN LINE
FROM STATION 9750+00 TO STATION 9798+587
Scale 1 Inch = 100 Feet
September 27, 1925
OFFICE OF VALUATION ENGINEER COLUMBUS, OHIO.

REVISED
JAN. 1, 1931
V-307
2

REVISED
V-307
2

REVISED
V-307
2

KS 3070 LC 8123 MP 0.5-1.5