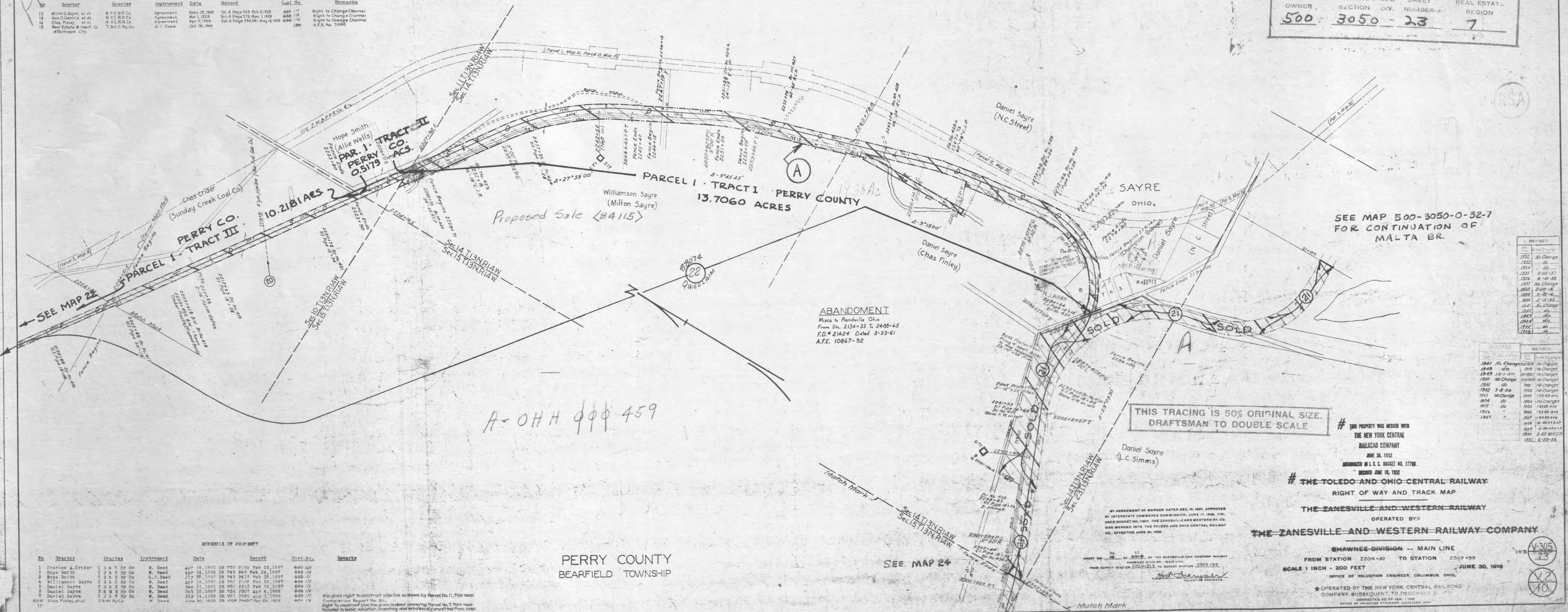


ABAND. R-O-W "A" = 27.31 AC. THIS SHEET. TOTAL = 160.25 AC.

OWNER	VALUATION SUB SHEET	REAL ESTAT. REGION
500	3050-23	7

SCHEDULE OF PROPERTY

No.	Grantor	Grantee	Instrument	Date	Record	Cost No.	Remarks
12	Milton G. Sayre, et al.	N.Y.C.R.R. Co.	Agreement	Sub. 25 1928	Vol. 6 Page 568 Feb 2 1928	689 177	Right to Change Channel
13	Geo. O. Dennis, et al.	N.Y.C.R.R. Co.	Agreement	Mar. 1 1929	Vol. 6 Page 578 Apr. 1 1928	686 178	Right to Change Channel
14	Chas. Finley, et al.	N.Y.C.R.R. Co.	Agreement	Apr. 17 1929	Vol. 6 Page 591 May 16 1928	686 179	Right to Change Channel
15	Real Estate & Imp't. Co. of Baltimore City	T. & C. Ry. Co.	Q. C. Deed	Oct. 28 1949		286	A.F.E. No. 11990



SEE MAP 500-3050-0-32-7 FOR CONTINUATION OF MALTA BR.

ABANDONMENT
 Misc to Rendville Ohio
 From Sta. 2134+35 to Sta. 2488+45
 F.D. #21424 Dated 3-23-61
 A.F.E. 10867-92

THIS TRACING IS 50% ORIGINAL SIZE.
 DRAFTSMAN TO DOUBLE SCALE

THIS PROPERTY WAS MERGED WITH
 THE NEW YORK CENTRAL
 RAILROAD COMPANY
 JUNE 30, 1952
 ANNOUNCED IN L.C.C. SHEET NO. 17700.
 RECORDED JUNE 18, 1952

THE TOLEDO AND OHIO CENTRAL RAILWAY
 RIGHT OF WAY AND TRACK MAP
 OPERATED BY
 THE ZANESVILLE AND WESTERN RAILWAY COMPANY

SHAWNEE DIVISION -- MAIN LINE
 FROM STATION 2204+63 TO STATION 2303+99
 SCALE 1 INCH = 200 FEET
 OFFICE OF VALUATION ENGINEER, COLUMBUS, OHIO.
 OPERATED BY THE NEW YORK CENTRAL RAILROAD COMPANY SUBSEQUENT TO DECEMBER 31, 1952
 CORRECTED AS OF JAN. 1, 1953
 OFFICE OF VALUATION ENGINEER, CLEVELAND, OHIO

A-OHH 000 459

PERRY COUNTY
 BEARFIELD TOWNSHIP

SCHEDULE OF PROPERTY

No.	Grantor	Grantee	Instrument	Date	Record	Cost No.	Remarks
1	Charles A. Crider	C. S. & R. Ry. Co.	W. Deed	Apr. 14 1890	DB 750 P198 Feb 22 1897	680 169	
2	Hope Smith	C. S. & R. Ry. Co.	W. Deed	Apr. 14 1890	DB 749 P49 Feb 22 1897	680 170	
3	Hope Smith	C. S. & R. Ry. Co.	Q. C. Deed	July 26 1890	DB 749 P47 Feb 22 1897	680 171	
4	Williamson Sayre	C. S. & R. Ry. Co.	W. Deed	Apr. 14 1890	DB 750 P188 Feb 22 1897	680 172	
5	Daniel Sayre	C. S. & R. Ry. Co.	W. Deed	Sept 21 1891	DB 750 P213 Feb 26 1897	680 173	
6	Daniel Sayre	C. S. & R. Ry. Co.	W. Deed	Oct 12 1897	DB 750 P207 Apr 4 1898	680 174	
7	Daniel Sayre	C. S. & R. Ry. Co.	W. Deed	July 14 1898	DB 751 P286 Aug 1 1898	680 175	
8	Chas. Finley, et al.	T. & C. Ry. Co.	W. Deed	June 30 1925	DB 1106 P4427 Mar 24 1926	491 176	

Also gives right to construct pipe line as shown by Record No. 11, this map.
 Conveys right to construct pipe line given in deed conveying Parcel No. 7, this map
 Right to construct pipe line given in deed conveying Parcel No. 7, this map
 included in basic valuation inventory and erroneously omitted from map.

REVISED

Year	Date Change	By
1932	10-25-37	do
1933	do	do
1934	do	do
1935	2-25-37	do
1936	8-10-38	do
1937	do	do
1938	2-22-41	do
1939	2-22-41	do
1940	2-13-42	do
1941	do	do
1942	do	do
1943	do	do
1944	do	do
1945	do	do
1946	do	do
1947	do	do

REVISED

Year	Date Change	By
1947	10-25-37	do
1948	do	do
1949	12-1-40	do
1950	do	do
1951	do	do
1952	3-8-54	do
1953	do	do
1954	do	do
1955	do	do
1956	do	do
1957	do	do
1958	do	do
1959	do	do
1960	do	do
1961	do	do
1962	do	do
1963	do	do
1964	do	do
1965	do	do
1966	do	do
1967	do	do
1968	do	do
1969	do	do
1970	do	do
1971	do	do
1972	do	do
1973	do	do
1974	do	do
1975	do	do
1976	do	do
1977	do	do
1978	do	do
1979	do	do
1980	do	do
1981	do	do
1982	do	do
1983	do	do
1984	do	do
1985	do	do
1986	do	do
1987	do	do
1988	do	do
1989	do	do
1990	do	do
1991	do	do
1992	do	do
1993	do	do
1994	do	do
1995	do	do
1996	do	do
1997	do	do
1998	do	do
1999	do	do
2000	do	do
2001	do	do
2002	do	do
2003	do	do
2004	do	do
2005	do	do
2006	do	do
2007	do	do
2008	do	do
2009	do	do
2010	do	do