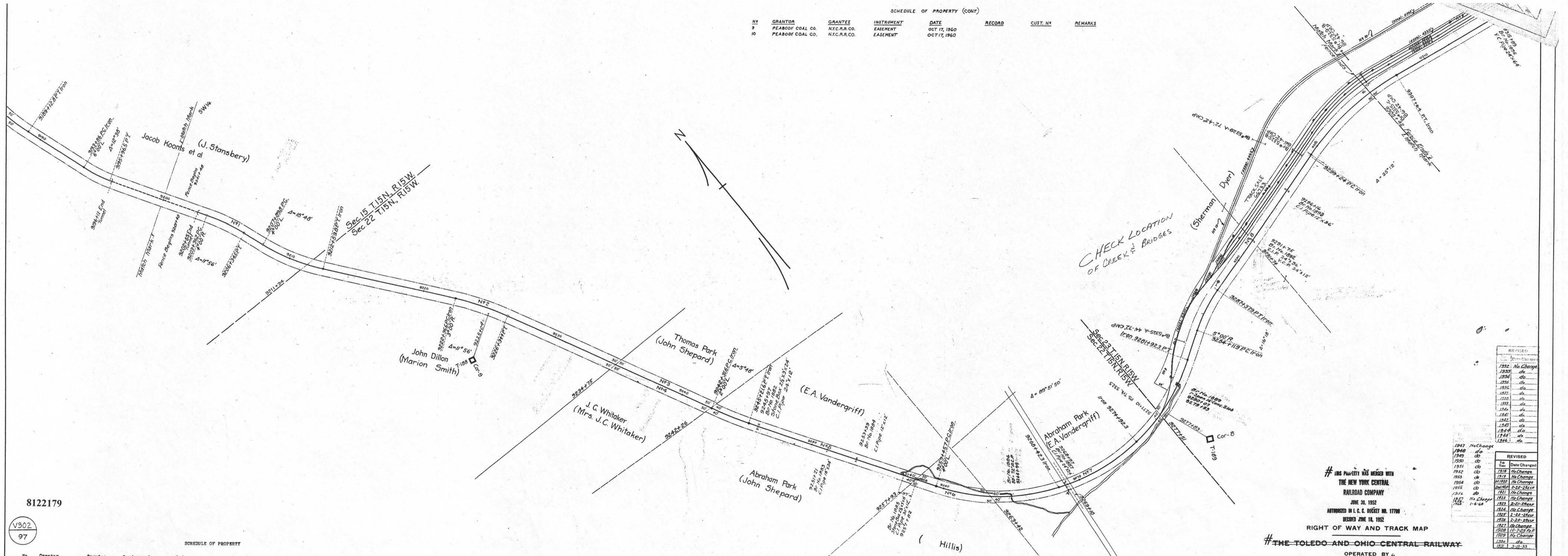


No.	GRANTOR	GRANTEE	INSTRUMENT	DATE	RECORD	CUST. NO.	REMARKS
3	PEABODY COAL CO.	N.Y.C.R.R. CO.	EASEMENT	OCT 17, 1860			
10	PEABODY COAL CO.	N.Y.C.R.R. CO.	EASEMENT	OCT 17, 1860			



8122179

V302
97

SCHEDULE OF PROPERTY

No.	Grantor	Grantee	Instrument	Date	Record	Cust. No.	Remarks
1	Jacob Koonts, et al	O C R R Co	Deed	Aug 20, 1861	DB V26 P309	Oct 8, 1861	28-666# This is part of parcel #16, Map 56
2	John Dillon	O C R R Co	R. Deed	Sep 4, 1863	DB V37 P454	Mar 21, 1869	37-666#
3	Thos. Parks	O C R R Co	R. Deed	Apr 20, 1863	DB V37 P447	Apr 25, 1869	32-866# This deed also conveys parcel #4, this map.
4	John C. Whitaker	O C R R Co	R. Deed	July 19, 1863	DB V37 P443	Apr 24, 1869	39-667#
5	Abraham Park	T & O C Ry Co	R. Deed	Feb 21, 1860	DB V39 P250	Mar 10, 1890	34-267#
6	No paper title found.	Held by adverse possession and claimed by Ry Co					35-267#
7	Abraham Park	T & O C Ry Co	R. Deed	Feb 21, 1860	DB V39 P251	Mar 10, 1890	36-267#
8	No paper title found.	Held by adverse possession and claimed by Ry Co					37-267#

PERRY COUNTY
PIKE TOWNSHIP

VALUATION ENGINEER
K. H. ...

THIS PROPERTY WAS MERGED WITH
THE NEW YORK CENTRAL
RAILROAD COMPANY
JUNE 30, 1952
AUTHORIZED BY I. C. C. DCKET NO. 17700
ISSUED JUNE 18, 1952
RIGHT OF WAY AND TRACK MAP
THE TOLEDO AND OHIO CENTRAL RAILWAY
OPERATED BY
THE TOLEDO AND OHIO CENTRAL RAILWAY COMPANY

CORNING DIVISION -- MAIN LINE
FROM STATION 9200+00 TO STATION 9305+42
SCALE 1 INCH = 200 FEET
JUNE 30, 1918
OFFICE OF VALUATION ENGINEER, COLUMBUS, OHIO

SHORT STATION - Sta. 9257 to Sta. 9258 - 57'
* OPERATED BY THE NEW YORK CENTRAL RAILROAD COMPANY SUBSEQUENT TO DECEMBER 31, 1921. CORRECTED AS OF JAN. 1, 1922.

REVISION	DATE	BY	REVISION	
1922	No Change		1922	No Change
1923	do		1923	do
1924	do		1924	do
1925	do		1925	do
1926	do		1926	do
1927	do		1927	do
1928	do		1928	do
1929	do		1929	do
1930	do		1930	do
1931	do		1931	do
1932	do		1932	do
1933	do		1933	do
1934	do		1934	do
1935	do		1935	do
1936	do		1936	do
1937	do		1937	do
1938	do		1938	do
1939	do		1939	do
1940	do		1940	do
1941	do		1941	do
1942	do		1942	do
1943	do		1943	do
1944	do		1944	do
1945	do		1945	do
1946	do		1946	do
1947	do		1947	do
1948	do		1948	do
1949	do		1949	do
1950	do		1950	do
1951	do		1951	do
1952	do		1952	do
1953	do		1953	do
1954	do		1954	do
1955	do		1955	do
1956	do		1956	do
1957	do		1957	do
1958	do		1958	do
1959	do		1959	do
1960	do		1960	do

YS 3020 LC 8122 MP 187.5 - 189.5