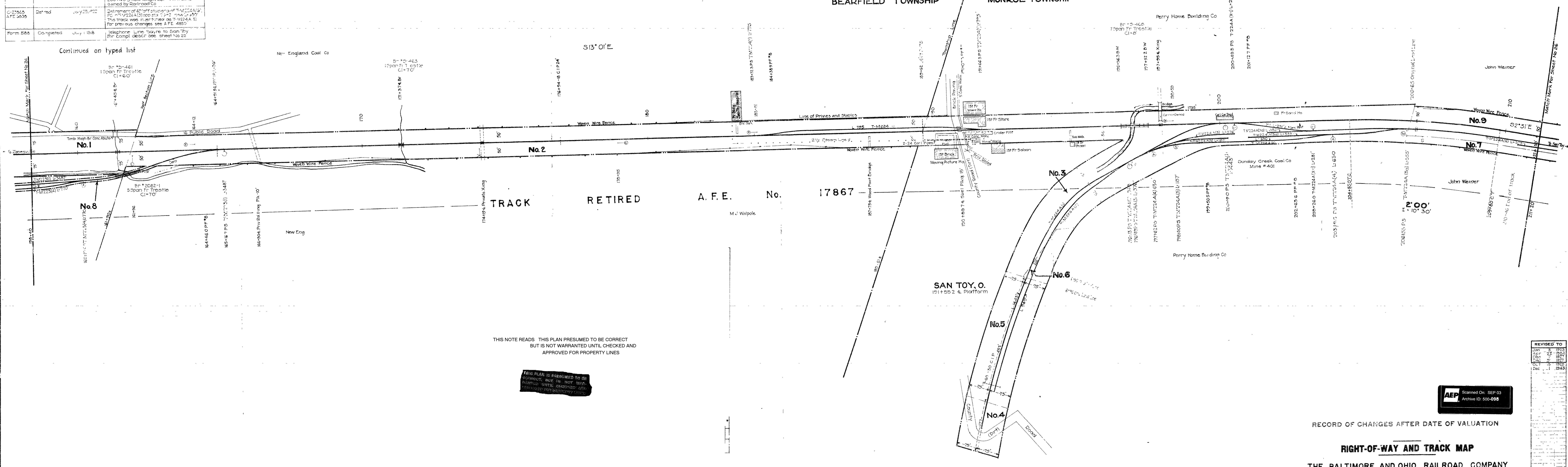
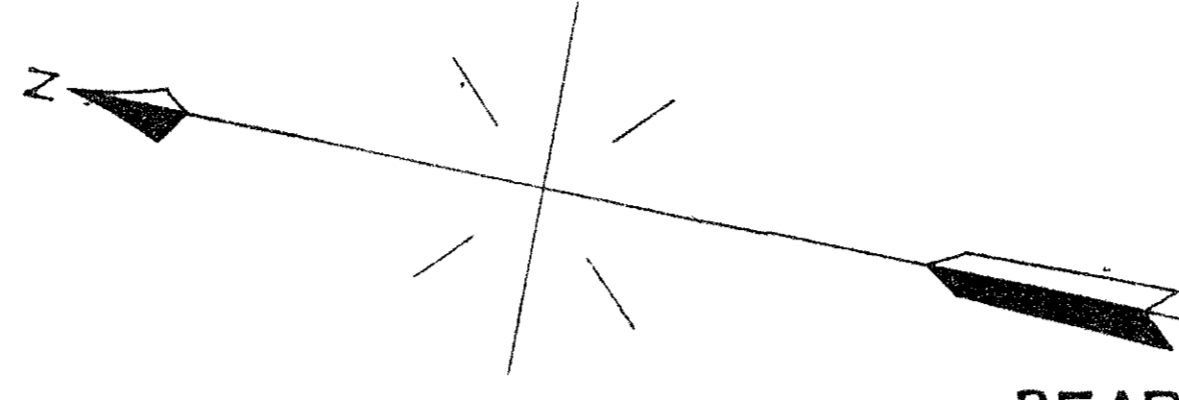


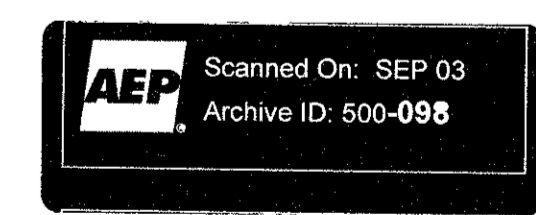
AUTHORITY	DATE INSTALLED OR RETIRED	DESCRIPTION
C 21624 A.F.E. 4850	Completed Oct 12, 1919 See also A.F.E. 6806	Track changes were made at mine No. 401 of the Sunday Creek Coal Co. as follows: T-M224A(6), L-164 including a No. 6 turnout, was removed, P.S. was of station 201+78.8. The No. 8 turnout of X-2 was removed also 408' from T-M224A(5) from opposite station 204+87 to 208+56, the remaining portion of X-2, P.S. at station 206+95 was incorporated into T-M224A(5) making the new length 811', the portion of T-M224A(5) from opposite station 208+56 to P.S. of station 207+71 was numbered T-M224A(6). The No. 8 crossover between T-M224A(5) and T-M224A(6), X-1 L-172, east P.S. opposite station 215+05 to T-M224A(5) was moved to a new location between T-M224A(5) and main track, east P.S. of station 200+49.5 new length 281'. All tracks owned by Railroad Co.
C 22425 A.F.E. 2006	Retired July 25, 1922	Retirement of 4 1/2" off station of T-M224A(5) P.S. T-M224A(5) opposite P.S. 200+49.5. The track was in the form of T-M224A(5) for previous changes see A.F.E. 4850.
Form 586	Completed July 1, 1918	Telephone Line Sayre to San Toy. For Compl. descr. see sheet No. 22.

PERRY COUNTY, OHIO.



THIS NOTE READS THIS PLAN PRESUMED TO BE CORRECT BUT IS NOT WARRANTED UNTIL CHECKED AND APPROVED FOR PROPERTY LINES

THIS PLAN IS PRESUMED TO BE CORRECT, BUT IS NOT WARRANTED UNTIL CHECKED AND APPROVED FOR PROPERTY LINES



RECORD OF CHANGES AFTER DATE OF VALUATION

RIGHT-OF-WAY AND TRACK MAP

THE BALTIMORE AND OHIO RAILROAD COMPANY
OPERATED BY
THE BALTIMORE AND OHIO RAILROAD COMPANY
NEWARK DIVISION NEW ENGLAND COAL BRANCH

STATION 158+40 TO STATION 211+20
SCALE 1 IN. = 100 FT. JUNE 30, 1918
OFFICE OF VALUATION ENGINEER
BALTIMORE, MD.

Sheet No. 25 of 26, or many and its supplements sheets of The Sunday Creek Railroad Company, V-127.1 Newark Division, New England Coal Branch, from survey station 158+40 to survey station 211+20

D. H. Edwards
Plot Engineer

REVISED TO	DATE	BY
1	1918	
2	1918	
3	1918	
4	1918	
5	1918	
6	1918	
7	1918	
8	1918	
9	1918	
10	1918	
11	1918	
12	1918	
13	1918	
14	1918	
15	1918	
16	1918	
17	1918	
18	1918	
19	1918	
20	1918	
21	1918	
22	1918	
23	1918	
24	1918	
25	1918	

