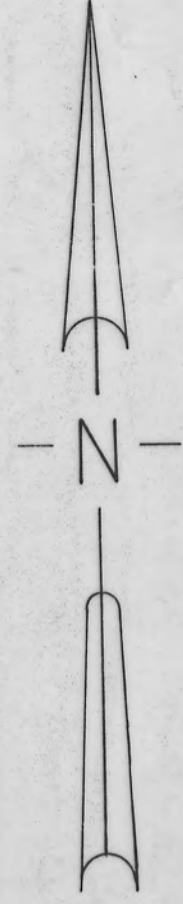


HUNTERS GLEN

THOMAS T. JONES
Vol. 255 Pg. 124

Bearings are based on the south line of the northwest quarter of Section 4 being N 90° 00' 00" E



STATE OF OHIO
PERRY COUNTY
SALTICK TOWNSHIP
SECTION 4
T-14 R-15 S-4

KENNETH & HAZEL GARLINGER
Vol. 125 Pg. 167

ELLA WHITE & BILL RILEY
Vol. 178 Pg. 569
249 263

Prior Deed: BSS DEVELOPMENT
O.R. 66 Pg. 89

CURVE DATA TABLE

Δ	R	L	CH.	Bearing	
A	54° 31' 10"	255.00'	242.64'	233.59'	N 13° 24' 55" E
B	40° 35' 23"	255.00'	180.65'	176.89'	N 20° 22' 28" E
C	13° 55' 43"	255.00'	61.99'	61.84'	N 06° 53' 06" W

- 5/8 X 36 INCH REBARS SET WITH TOBIN-MCFARLAND CAP
- ▲ RAILROAD SPIKE SET
- 5/8 INCH REBAR FOUND

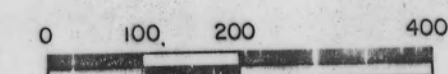
All dimensions are shown in feet and decimal parts thereof.

All Lots have a building setback line of 75 feet from the center of the road, except lot 11, which is 50 feet.

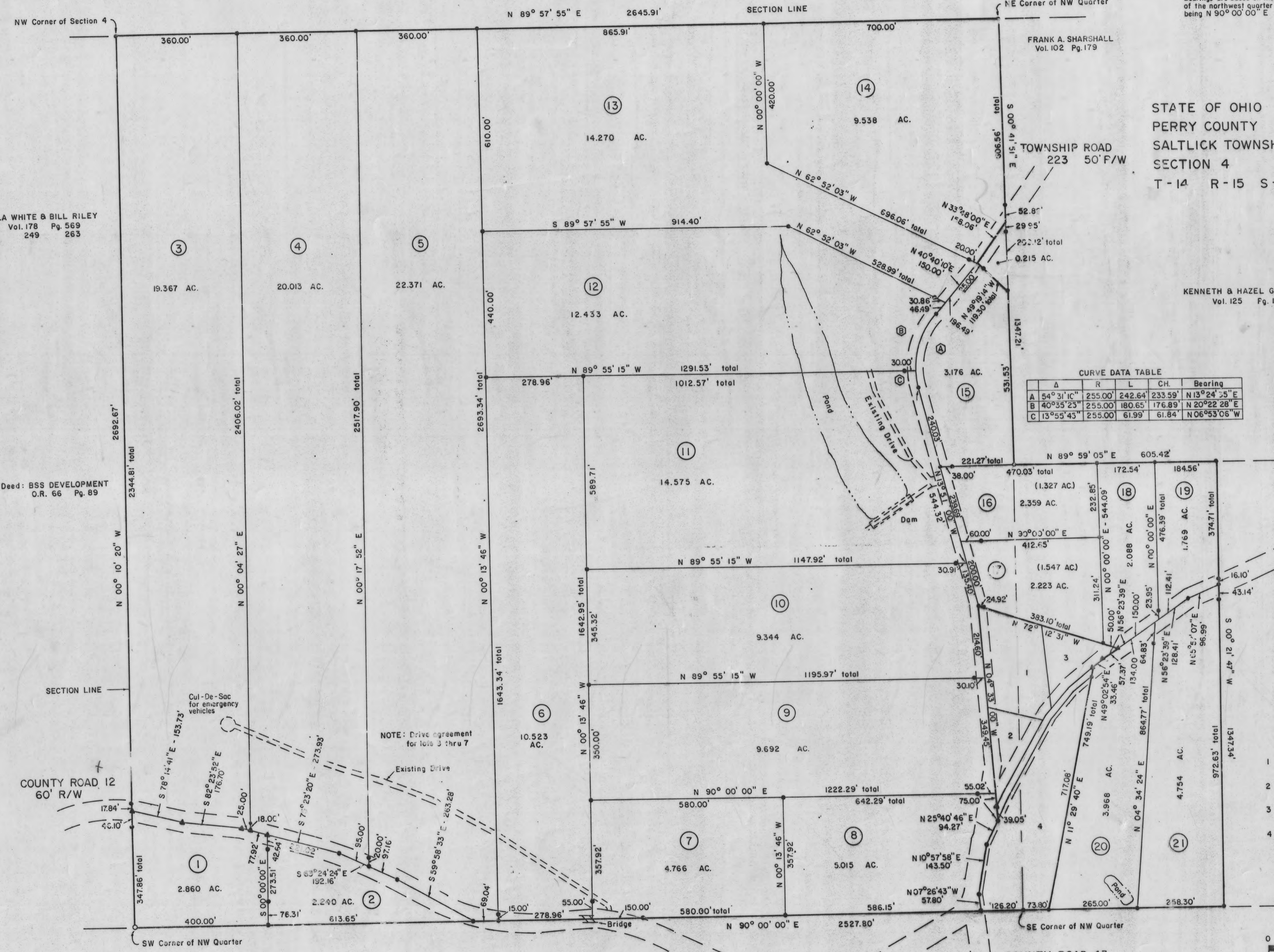
COUNTY ROAD 12
60' R/W

VIRVE BURFORD
Vol. 217 Pg. 522

- 1 ROGER & LEAH BRUNTON
Vol. 242 Pg. 550
- 2 BENSON & PAMELA OWENS
Vol. 248 Pg. 713
- 3 PATRICIA McCLELLAN
Vol. 254 Pg. 421
- 4 STEVEN M. APPELMAN & KATHY COEY
Vol. 238 Pg. 344



1 INCH = 200 FEET



Tobin-McFarland Surveying, Inc.
Surveyors and Cartographers
111 West Wheeling Street Suite 202
LANCASTER, OHIO 43130

U.S.A.
Vol. 152 Pg. 393

5/6

5/67

5/67

5/67