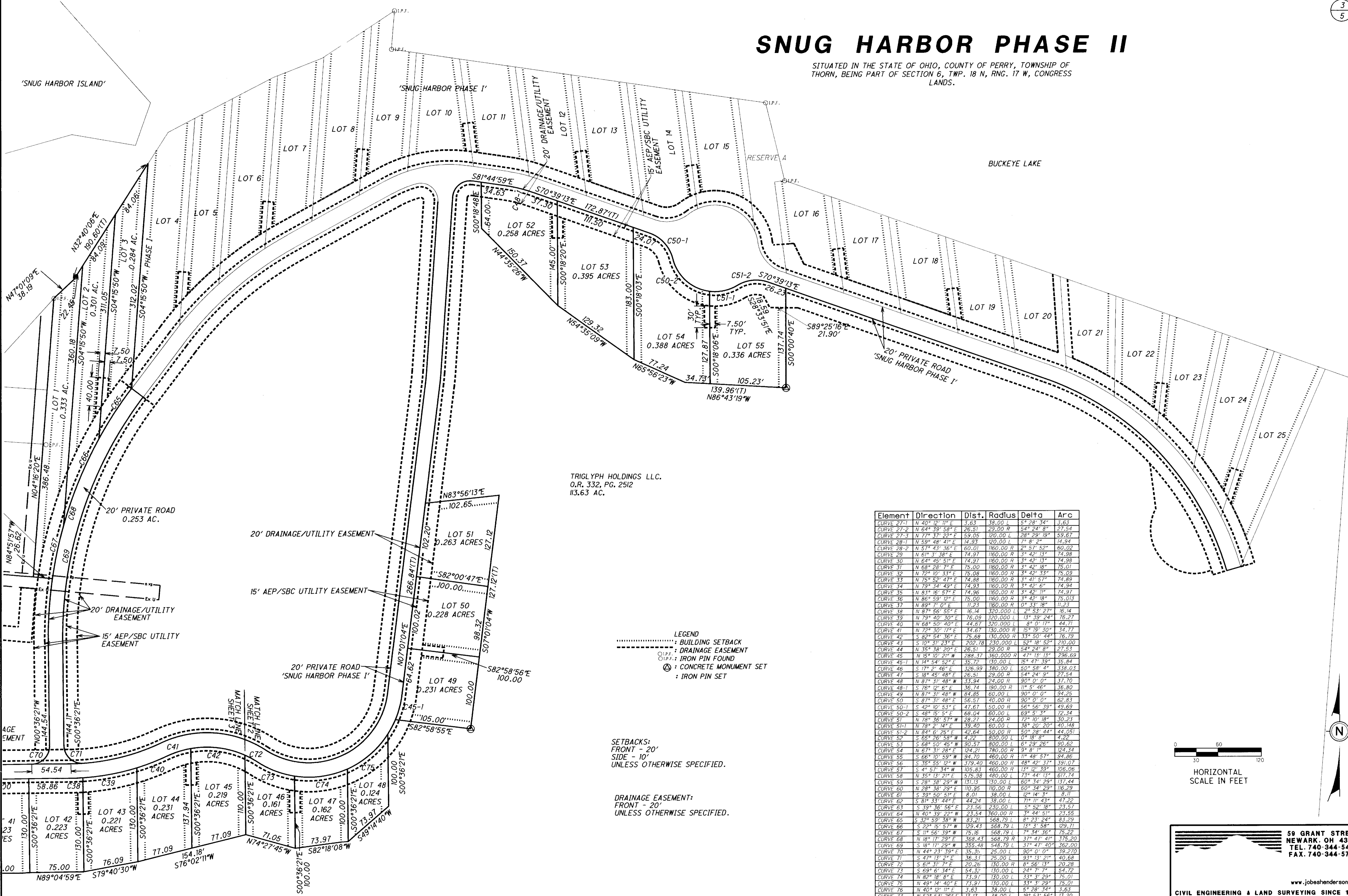


# SNUG HARBOR PHASE II

SITUATED IN THE STATE OF OHIO, COUNTY OF PERRY, TOWNSHIP OF THORN, BEING PART OF SECTION 6, TWP. 18 N, RNG. 17 W, CONGRESS LANDS.



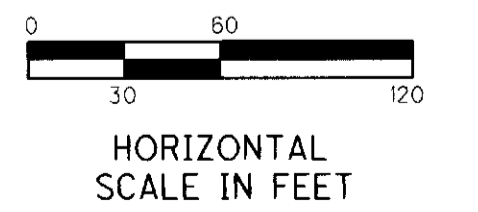
TRIGLYPH HOLDINGS LLC.  
O.R. 332, PG. 2512  
113.63 AC.

**LEGEND**  
 - - - - - BUILDING SETBACK  
 - - - - - DRAINAGE EASEMENT  
 O.I.P.F. IRON PIN FOUND  
 ⊙ CONCRETE MONUMENT SET  
 ⊙ IRON PIN SET

SETBACKS:  
FRONT - 20'  
SIDE - 10'  
UNLESS OTHERWISE SPECIFIED.

DRAINAGE EASEMENT:  
FRONT - 20'  
UNLESS OTHERWISE SPECIFIED.

Element	Direction	Dist.	Radius	Delta	Arc
CURVE 27-1	N 40° 12' 11" E	3.63	38.00	5° 28' 34"	3.63
CURVE 27-2	N 64° 39' 58" E	26.51	29.00 R	54° 24' 8"	27.54
CURVE 27-3	N 77° 37' 22" E	59.05	120.00 L	28° 29' 19"	59.67
CURVE 28-1	N 59° 48' 41" E	14.93	120.00 L	7° 8' 2"	14.94
CURVE 28-2	N 57° 43' 36" E	60.01	1160.00 R	2° 57' 52"	60.02
CURVE 29	N 61° 3' 38" E	74.97	1160.00 R	3° 42' 13"	74.98
CURVE 30	N 64° 45' 51" E	74.97	1160.00 R	3° 42' 13"	74.98
CURVE 31	N 68° 28' 74" E	75.00	1160.00 R	3° 42' 18"	75.01
CURVE 32	N 72° 10' 31" E	75.08	1160.00 R	3° 42' 33"	75.09
CURVE 33	N 75° 52' 47" E	74.88	1160.00 R	3° 41' 57"	74.89
CURVE 34	N 79° 34' 49" E	74.93	1160.00 R	3° 42' 6"	74.94
CURVE 35	N 83° 16' 57" E	74.96	1160.00 R	3° 42' 11"	74.97
CURVE 36	N 86° 59' 12" E	75.00	1160.00 R	3° 42' 18"	75.013
CURVE 37	N 89° 7' 07" E	11.23	1160.00 R	0° 33' 18"	11.23
CURVE 38	N 87° 56' 55" E	16.14	320.000 L	2° 53' 27"	16.14
CURVE 39	N 79° 40' 30" E	76.09	320.000 L	13° 39' 24"	76.27
CURVE 40	N 68° 50' 40" E	44.67	320.000 L	8° 0' 17"	44.71
CURVE 41	N 72° 30' 17" E	34.67	130.000 R	15° 19' 30"	34.77
CURVE 42	S 82° 54' 36" E	75.68	130.000 R	33° 50' 44"	76.79
CURVE 43	S 10° 31' 27" E	202.78	230.000 L	52° 18' 52"	210.00
CURVE 44	N 35° 38' 20" E	26.51	29.00 R	54° 24' 8"	27.53
CURVE 45	N 15° 10' 21" W	288.37	360.000 R	47° 13' 13"	296.69
CURVE 45-1	N 14° 54' 52" E	35.72	130.000 L	15° 47' 39"	35.84
CURVE 46	S 17° 2' 46" E	326.99	380.00 L	50° 58' 4"	338.03
CURVE 47	S 18° 45' 48" E	26.51	29.00 R	54° 24' 9"	27.54
CURVE 48	N 87° 37' 48" W	33.94	24.00 R	90° 0' 0"	37.70
CURVE 48-1	S 76° 12' 6" E	36.74	190.00 R	11° 5' 46"	36.80
CURVE 49	N 87° 31' 48" W	84.85	60.00 L	90° 0' 0"	94.26
CURVE 50	S 87° 31' 48" E	56.57	40.00 R	90° 0' 0"	62.83
CURVE 50-1	S 42° 10' 53" E	47.67	50.00 R	56° 56' 39"	49.69
CURVE 50-2	S 48° 15' 5" E	68.04	60.00 L	69° 5' 3"	72.34
CURVE 51	N 78° 36' 57" W	28.27	24.00 R	72° 10' 18"	30.23
CURVE 51-1	N 78° 2' 14" E	39.40	60.00 L	38° 20' 20"	40.148
CURVE 51-2	N 84° 6' 28" E	42.64	50.00 R	50° 28' 44"	44.051
CURVE 52	S 12° 59' 38" W	4.22	800.00 L	0° 18' 8"	4.22
CURVE 53	S 68° 50' 45" W	90.57	800.00 L	6° 29' 26"	90.62
CURVE 54	N 67° 31' 28" E	124.21	780.00 R	9° 8' 1"	124.34
CURVE 55	S 66° 10' 59" W	94.70	460.00 R	11° 48' 57"	94.86
CURVE 56	S 35° 55' 12" W	379.40	460.00 R	48° 42' 37"	391.07
CURVE 57	S 4° 57' 34" W	105.83	460.00 R	11° 5' 46"	106.06
CURVE 58	S 15° 15' 11" W	575.98	480.00 L	73° 44' 13"	617.74
CURVE 59	S 28° 38' 29" W	131.13	130.00 L	60° 34' 29"	137.44
CURVE 60	N 28° 38' 29" E	110.95	110.00 R	60° 34' 29"	116.29
CURVE 61	S 39° 50' 51" E	8.01	38.00 L	12° 14' 3"	8.11
CURVE 62	S 81° 33' 44" E	44.24	38.00 L	71° 11' 43"	47.22
CURVE 63	S 39° 36' 56" E	23.56	230.00 L	55° 52' 18"	23.57
CURVE 64	N 40° 39' 22" W	23.54	360.00 R	15° 12' 39"	23.55
CURVE 65	S 12° 59' 38" W	83.21	568.79 L	8° 23' 24"	83.29
CURVE 66	S 22° 15' 57" W	129.43	568.79 L	13° 3' 58"	129.71
CURVE 67	S 11° 56' 39" W	75.16	568.79 L	7° 34' 36"	75.22
CURVE 68	N 18° 17' 29" E	368.43	568.79 R	37° 47' 41"	375.20
CURVE 69	S 18° 17' 29" W	355.48	548.79 E	37° 47' 40"	362.00
CURVE 70	N 44° 23' 39" E	35.35	25.00 L	90° 0' 0"	35.270
CURVE 71	S 47° 13' 27" E	36.31	25.00 L	91° 13' 21"	40.68
CURVE 72	S 61° 31' 7" E	20.26	130.00 R	8° 56' 13"	20.28
CURVE 73	S 69° 6' 34" E	54.32	130.00 L	24° 7' 7"	54.72
CURVE 74	N 82° 18' 8" E	73.97	130.00 L	33° 3' 29"	75.01
CURVE 75	N 49° 14' 40" E	73.97	130.00 L	33° 3' 29"	75.01
CURVE 76	N 40° 12' 11" E	3.63	38.00 L	5° 28' 34"	3.63
CURVE 77	N 52° 53' 26" E	13.11	18.00 L	19° 53' 56"	13.20



59 GRANT STREET  
NEWARK, OH 43055  
TEL. 740-344-5451  
FAX. 740-344-5456

CIVIL ENGINEERING & LAND SURVEYING SINCE 1965

www.jobshenderson.com