

(J) KERMIT A. BORING & DOROTHY E. BORING
0.608 AC
D.B. 215, PG. 185

(K) PAUL R. KRUMLAUF & REBECCA L. KRUMLAUF
0.401 AC
D.B. 231, PG. 583

(L) LAWRENCE E. GALLAGHER & SHEILA J. GALLAGHER
PAUL R. KRUMLAUF
KEVIN A. KRUMLAUF
0.397 AC
O.R. 238, PG. 27

EDGAR A. ORR, POST NO. 342
OF THE AMERICAN LEGION, INC.
5.297 AC
O.R. 112, PG. 267

EDGAR A. ORR, POST NO. 342
OF THE AMERICAN LEGION, INC.
3.75 AC
D.B. 179, PG. 236

CURVE TABLE

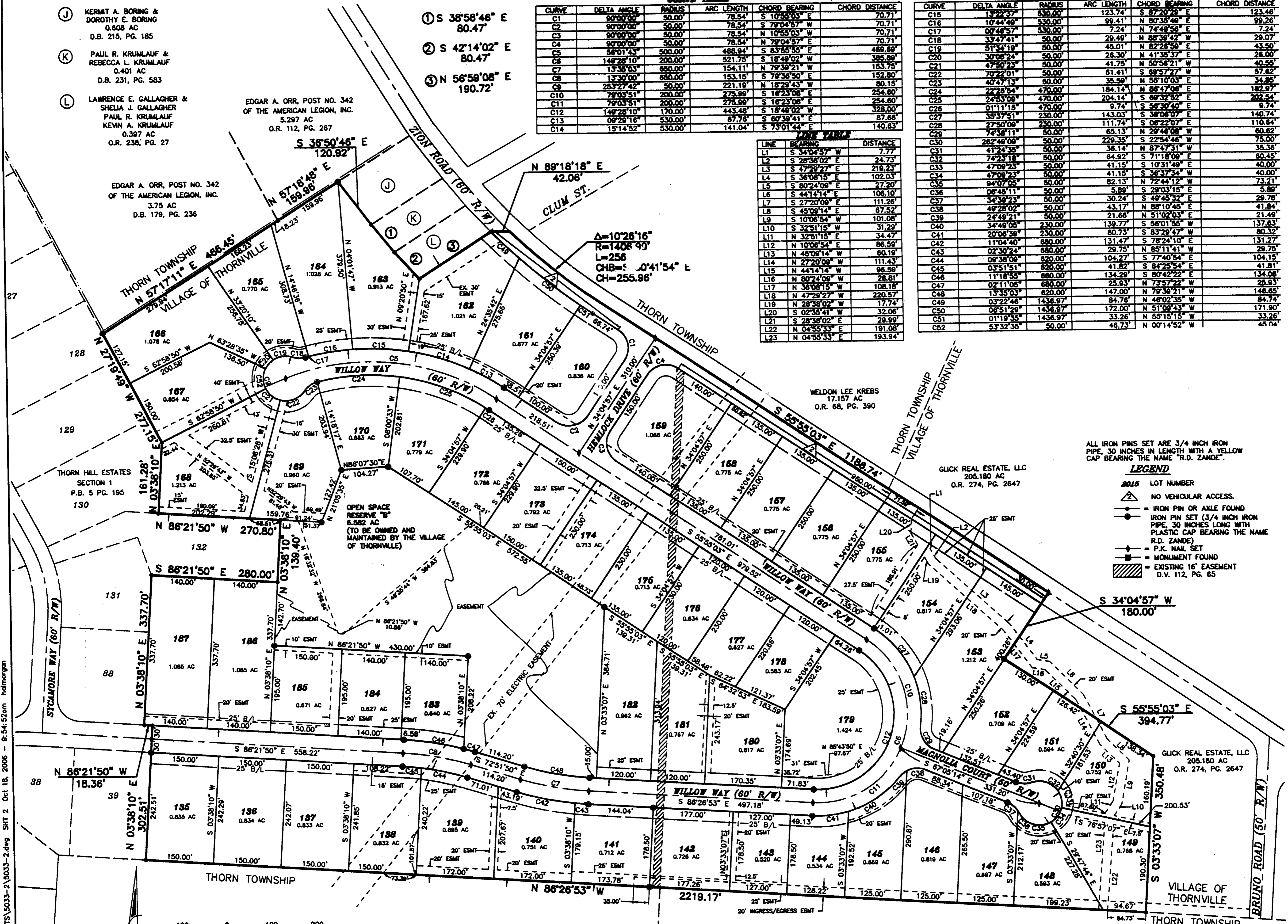
CURVE	DELTA ANGLE	RADIUS	ARC LENGTH	CHORD BEARING	CHORD DISTANCE
C1	90°00'00"	50.00'	78.54'	S 10°55'03" E	70.71'
C2	90°00'00"	50.00'	78.54'	S 79°04'57" W	70.71'
C3	90°00'00"	50.00'	78.54'	N 10°55'03" W	70.71'
C4	90°00'00"	50.00'	78.54'	N 79°04'57" E	70.71'
C5	56°01'43"	500.00'	488.94'	S 83°55'55" E	469.69'
C6	149°28'10"	200.00'	521.75'	S 18°49'02" W	385.89'
C7	13°35'03"	650.00'	154.11'	N 79°39'21" W	153.75'
C8	13°30'00"	650.00'	153.15'	S 79°36'50" E	152.80'
C9	25°27'42"	50.00'	221.19'	N 18°29'43" W	80.15'
C10	79°03'51"	200.00'	275.99'	S 16°23'08" E	254.60'
C11	79°03'51"	200.00'	275.99'	S 16°23'08" E	254.60'
C12	149°28'10"	170.00'	443.48'	S 18°49'02" W	328.00'
C13	09°29'18"	530.00'	87.76'	S 60°39'41" E	87.66'
C14	15°14'52"	530.00'	141.04'	S 73°01'44" E	140.63'

CURVE TABLE

CURVE	DELTA ANGLE	RADIUS	ARC LENGTH	CHORD BEARING	CHORD DISTANCE
C15	13°22'37"	530.00'	123.74'	S 87°20'29" E	123.48'
C16	10°44'49"	530.00'	99.41'	N 80°35'48" E	99.26'
C17	00°48'57"	530.00'	7.24'	N 74°48'56" E	7.24'
C18	33°47'41"	50.00'	29.49'	N 88°39'42" W	29.07'
C19	51°34'19"	50.00'	45.01'	N 82°26'59" E	43.50'
C20	30°08'24"	50.00'	26.30'	N 41°35'37" E	26.00'
C21	47°50'23"	50.00'	41.75'	N 50°56'21" W	40.55'
C22	70°22'01"	50.00'	61.41'	S 69°57'27" W	57.62'
C23	40°47'13"	50.00'	35.59'	N 55°10'03" E	34.85'
C24	22°28'54"	470.00'	184.14'	N 86°47'06" E	182.97'
C25	24°53'09"	470.00'	204.14'	S 69°32'52" E	202.54'
C26	01°11'15"	470.00'	9.74'	S 56°30'40" E	9.74'
C27	35°37'51"	230.00'	143.03'	S 38°06'07" E	140.74'
C28	27°50'09"	230.00'	111.74'	S 06°22'07" E	110.64'
C29	74°38'11"	50.00'	85.13'	N 29°46'08" W	80.62'
C30	28°49'09"	50.00'	229.35'	S 22°54'48" W	75.00'
C31	41°24'35"	50.00'	36.14'	N 87°47'31" W	35.38'
C32	74°23'18"	50.00'	64.92'	S 71°18'09" E	60.45'
C33	47°08'23"	50.00'	41.15'	S 10°31'49" E	40.00'
C34	47°08'23"	50.00'	41.15'	S 36°37'34" W	40.00'
C35	94°07'05"	50.00'	82.13'	N 72°44'12" W	73.21'
C36	06°45'11"	50.00'	5.89'	S 29°03'15" E	5.89'
C37	34°36'23"	50.00'	30.24'	S 49°45'32" E	29.78'
C38	49°28'02"	50.00'	43.17'	N 88°10'45" E	41.84'
C39	24°48'21"	50.00'	21.66'	N 51°02'03" E	21.49'
C40	34°49'05"	230.00'	139.77'	S 56°01'55" W	137.63'
C41	20°08'39"	230.00'	80.73'	S 83°29'47" W	80.32'
C42	11°04'40"	680.00'	131.47'	S 78°24'10" E	131.27'
C43	02°30'24"	680.00'	29.75'	N 85°11'41" W	29.75'
C44	09°38'09"	620.00'	104.27'	S 77°40'54" E	104.15'
C45	03°51'51"	620.00'	41.82'	S 84°25'54" E	41.81'
C46	11°18'55"	680.00'	134.29'	S 80°42'22" E	134.08'
C47	02°11'05"	680.00'	25.93'	N 73°57'22" W	25.93'
C48	13°33'03"	620.00'	147.00'	N 79°39'21" W	146.65'
C49	03°22'44"	1438.97'	84.76'	N 46°02'35" W	84.74'
C50	06°51'29"	1438.97'	172.00'	N 51°09'43" W	171.90'
C51	01°19'35"	1438.97'	33.26'	N 55°15'15" W	33.26'
C52	53°32'35"	50.00'	46.73'	N 00°14'52" W	46.04'

LINE TABLE

LINE	BEARING	DISTANCE
L1	S 34°04'57" W	7.77'
L2	S 28°38'02" E	24.73'
L3	S 47°28'27" E	218.23'
L4	S 36°08'15" E	102.03'
L5	S 80°24'09" E	27.20'
L6	S 44°14'14" E	106.10'
L7	S 27°20'09" E	111.26'
L8	S 45°09'14" E	67.52'
L9	S 10°06'54" W	101.08'
L10	S 32°51'15" W	31.29'
L11	N 32°51'15" E	34.47'
L12	N 10°06'54" E	86.59'
L13	N 45°09'14" W	60.19'
L14	N 27°20'09" W	111.43'
L15	N 44°14'14" W	96.59'
L16	N 80°24'09" W	28.61'
L17	N 36°08'15" W	108.18'
L18	N 47°28'27" W	220.57'
L19	N 28°38'02" W	17.74'
L20	S 02°30'41" E	32.06'
L21	S 28°38'02" E	29.99'
L22	N 04°55'33" E	191.08'
L23	N 04°55'33" E	193.94'



ALL IRON PINS SET ARE 3/4 INCH IRON PIPE, 30 INCHES IN LENGTH WITH A YELLOW CAP BEARING THE NAME "R.D. ZANDE".

LEGEND

- 2015 LOT NUMBER
- NO VEHICULAR ACCESS
- IRON PIN OR AXLE FOUND
- IRON PIN SET (3/4 INCH IRON PIPE, 30 INCHES LONG WITH PLASTIC CAP BEARING THE NAME R.D. ZANDE)
- P.K. NAIL SET
- MONUMENT FOUND
- EXISTING 16' EASEMENT D.V. 112, PG. 65

VACATED PER OR 381 PG. 2393

P:\50335\SURVEY\PLATS\5033-2\5033-2.dwg SH1 2 Oct 18, 2006 - 9:54:52am ledmorgon