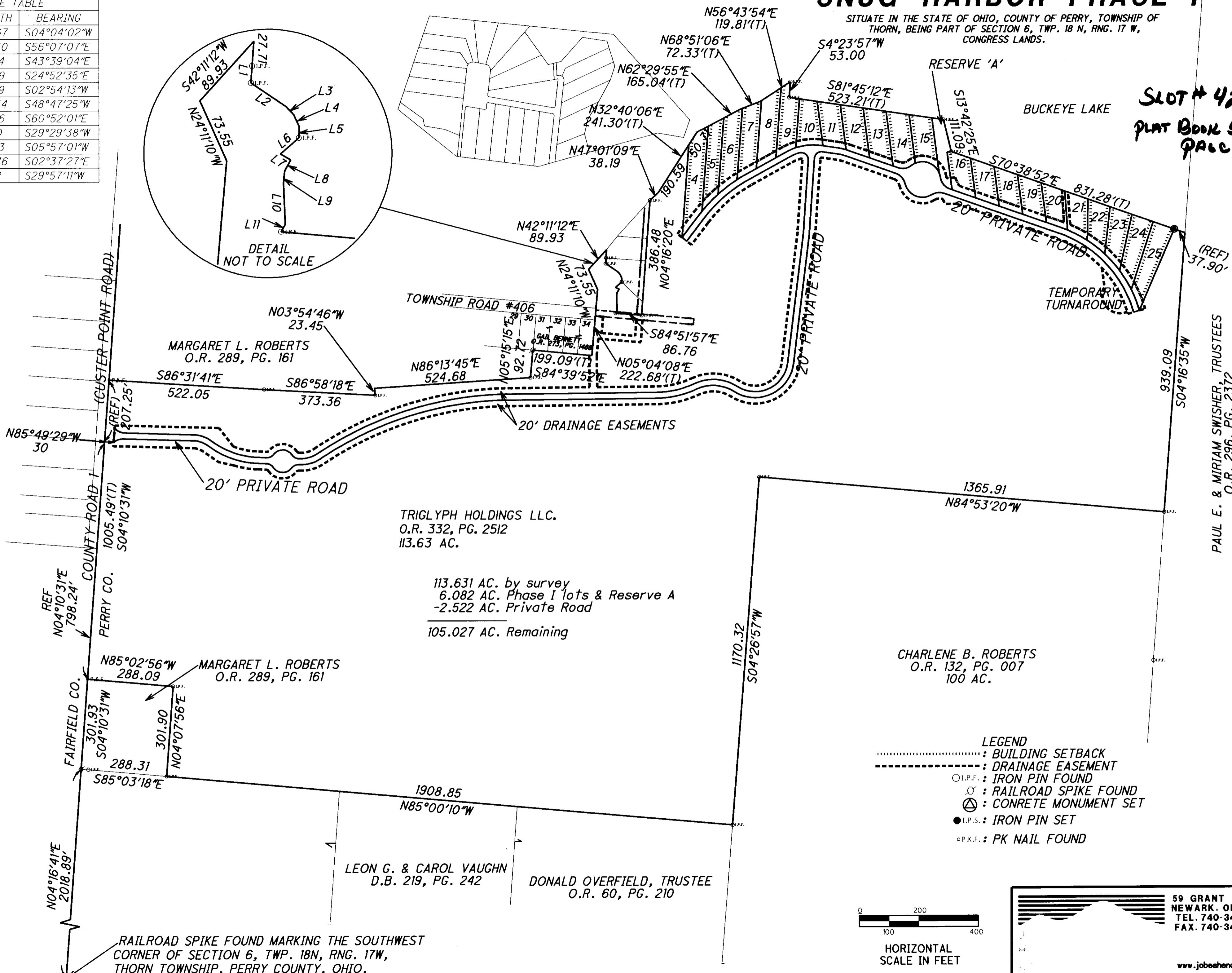
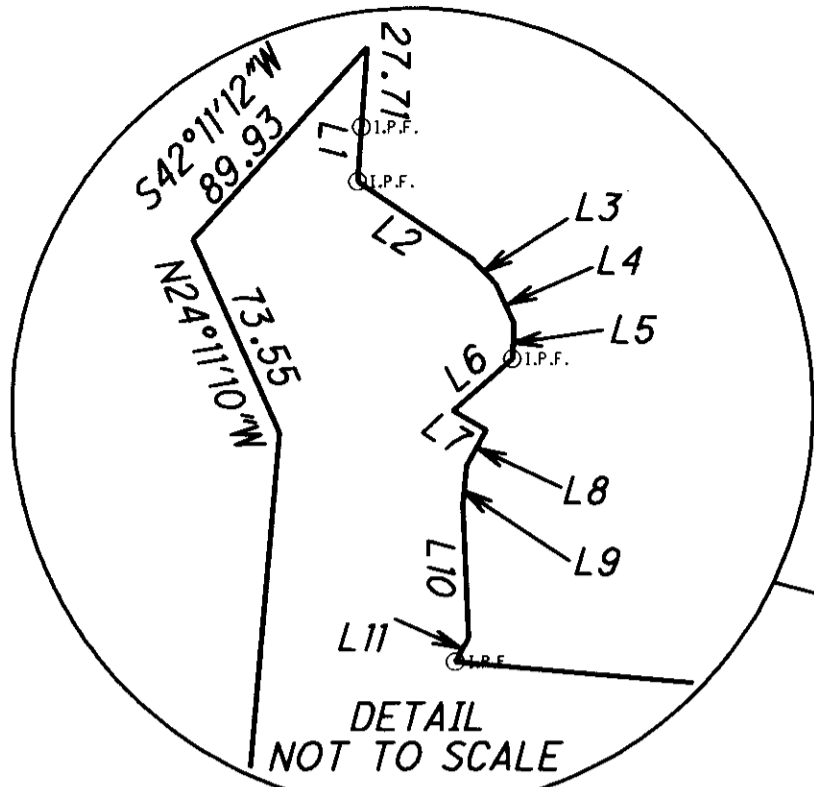


SNUG HARBOR PHASE I

SITUATE IN THE STATE OF OHIO, COUNTY OF PERRY, TOWNSHIP OF THORN, BEING PART OF SECTION 6, TWP. 18 N, RNG. 17 W, CONGRESS LANDS.

LINE	LENGTH	BEARING
L1	46.67	S04°04'02"W
L2	47.50	S56°07'07"E
L2	12.54	S43°39'04"E
L4	14.99	S24°52'35"E
L5	12.49	S02°54'13"W
L6	27.44	S48°47'25"W
L7	13.36	S60°52'01"E
L8	14.10	S29°29'38"W
L9	13.53	S05°57'01"W
L10	46.46	S02°37'27"E
L11	9.32	S29°57'11"W



SLOT # 422
PLAT BOOK 5
PAGE 474

PAUL E. & MIRIAM SWISHER, TRUSTEES
O.R. 296, PG. 2372
120.0 AC.

TRIGLYPH HOLDINGS LLC.
O.R. 332, PG. 2512
113.63 AC.

113.631 AC. by survey
6.082 AC. Phase I lots & Reserve A
-2.522 AC. Private Road
105.027 AC. Remaining

CHARLENE B. ROBERTS
O.R. 132, PG. 007
100 AC.

MARGARET L. ROBERTS
O.R. 289, PG. 161

MARGARET L. ROBERTS
O.R. 289, PG. 161

LEON G. & CAROL VAUGHN
D.B. 219, PG. 242

DONALD OVERFIELD, TRUSTEE
O.R. 60, PG. 210

- LEGEND**
- : BUILDING SETBACK
 - - - - - : DRAINAGE EASEMENT
 - I.P.F. : IRON PIN FOUND
 - ⊗ : RAILROAD SPIKE FOUND
 - ⊕ : CONCRETE MONUMENT SET
 - I.P.S. : IRON PIN SET
 - P.K.F. : PK NAIL FOUND



HORIZONTAL SCALE IN FEET

59 GRANT STREET
NEWARK, OH 43055
TEL. 740-344-5451
FAX. 740-344-5746

www.jobshenderson.com
CIVIL ENGINEERING & LAND SURVEYING SINCE 1965

RAILROAD SPIKE FOUND MARKING THE SOUTHWEST CORNER OF SECTION 6, TWP. 18N, RNG. 17W, THORN TOWNSHIP, PERRY COUNTY, OHIO.