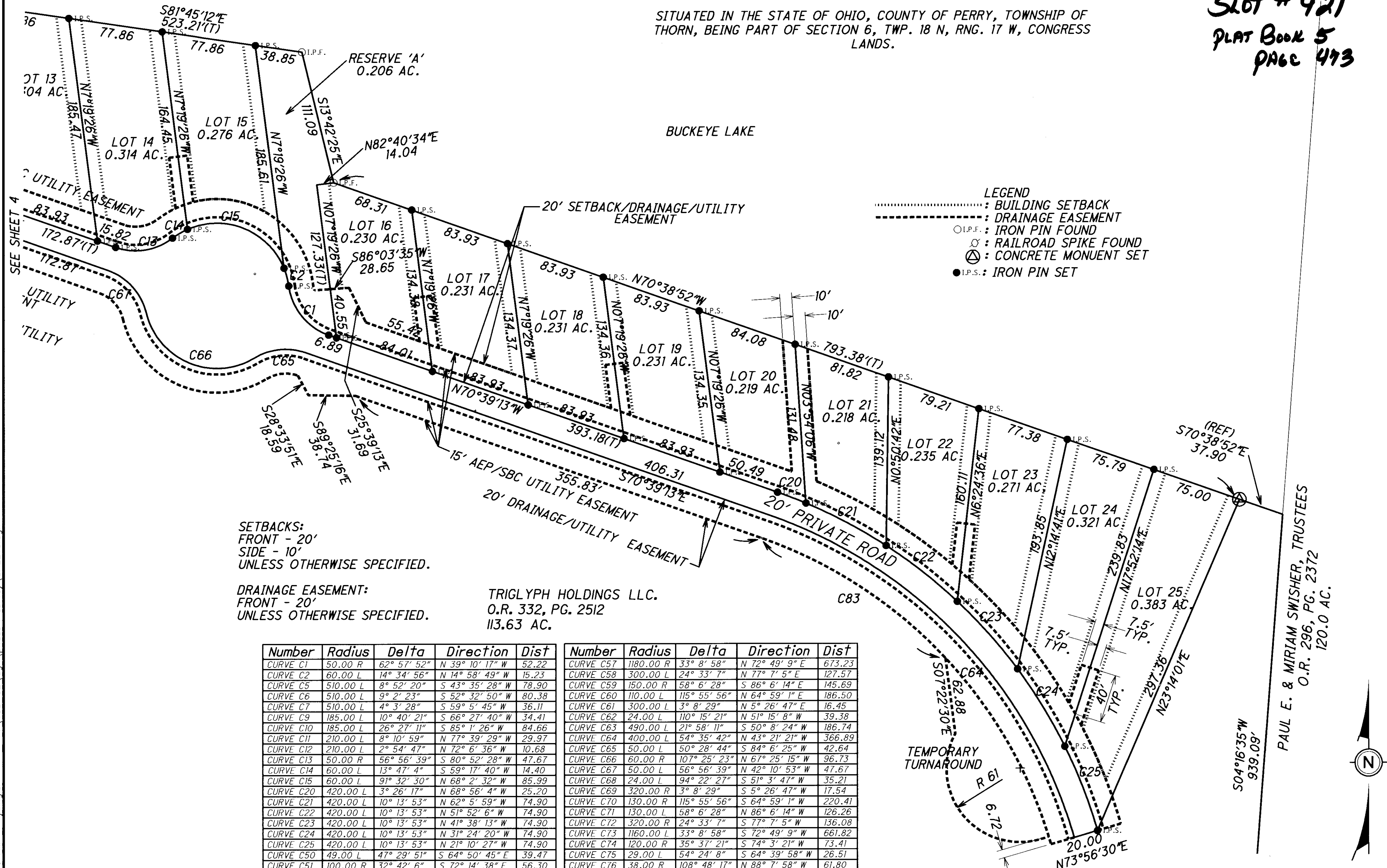


SNUG HARBOR PHASE I

SITUATED IN THE STATE OF OHIO, COUNTY OF PERRY, TOWNSHIP OF THORN, BEING PART OF SECTION 6, TWP. 18 N, RNG. 17 W, CONGRESS LANDS.

SLOT # 421
PLAT BOOK 5
PAGE 473



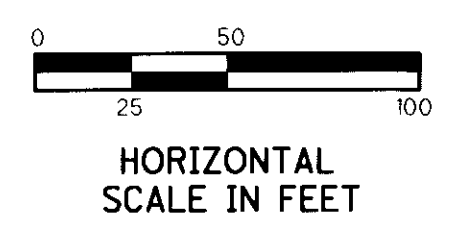
- LEGEND**
-: BUILDING SETBACK
 - - - - -: DRAINAGE EASEMENT
 - I.P.F.: IRON PIN FOUND
 - ⊙: RAILROAD SPIKE FOUND
 - ⊕: CONCRETE MONUMENT SET
 - I.P.S.: IRON PIN SET

SETBACKS:
FRONT - 20'
SIDE - 10'
UNLESS OTHERWISE SPECIFIED.

DRAINAGE EASEMENT:
FRONT - 20'
UNLESS OTHERWISE SPECIFIED.

TRIGLYPH HOLDINGS LLC.
O.R. 332, PG. 2512
113.63 AC.

Number	Radius	Delta	Direction	Dist	Number	Radius	Delta	Direction	Dist
CURVE C1	50.00 R	62° 57' 52"	N 39° 10' 17" W	52.22	CURVE C57	1180.00 R	33° 8' 58"	N 72° 49' 9" E	673.23
CURVE C2	60.00 L	14° 34' 56"	N 14° 58' 49" W	15.23	CURVE C58	300.00 L	24° 33' 7"	N 77° 7' 5" E	127.57
CURVE C5	510.00 L	8° 52' 20"	S 43° 35' 28" W	78.90	CURVE C59	150.00 R	58° 6' 28"	S 86° 6' 14" E	145.69
CURVE C6	510.00 L	9° 2' 23"	S 52° 32' 50" W	80.38	CURVE C60	110.00 L	115° 55' 56"	N 64° 59' 1" E	186.50
CURVE C7	510.00 L	4° 3' 28"	S 59° 5' 45" W	36.11	CURVE C61	300.00 L	3° 8' 29"	N 5° 26' 47" E	16.45
CURVE C9	185.00 L	10° 40' 21"	S 66° 27' 40" W	34.41	CURVE C62	24.00 L	110° 15' 21"	N 51° 15' 8" W	39.38
CURVE C10	185.00 L	26° 27' 11"	S 85° 1' 26" W	84.66	CURVE C63	490.00 L	21° 58' 11"	S 50° 8' 24" W	186.74
CURVE C11	210.00 L	8° 10' 59"	N 77° 39' 29" W	29.97	CURVE C64	400.00 L	54° 35' 42"	N 43° 21' 21" W	366.89
CURVE C12	210.00 L	2° 54' 47"	N 72° 6' 36" W	10.68	CURVE C65	50.00 L	50° 28' 44"	S 84° 6' 25" W	42.64
CURVE C13	50.00 R	56° 56' 39"	S 80° 52' 28" W	47.67	CURVE C66	60.00 R	107° 25' 23"	N 67° 25' 15" W	96.73
CURVE C14	60.00 L	13° 47' 4"	S 59° 17' 40" W	14.40	CURVE C67	50.00 L	56° 56' 39"	N 42° 10' 53" W	47.67
CURVE C15	60.00 L	91° 32' 30"	N 68° 2' 32" W	85.99	CURVE C68	24.00 L	94° 22' 27"	S 51° 3' 47" W	35.21
CURVE C20	420.00 L	3° 26' 17"	N 68° 56' 4" W	25.20	CURVE C69	320.00 R	3° 8' 29"	S 5° 26' 47" W	17.54
CURVE C21	420.00 L	10° 13' 53"	N 62° 5' 59" W	74.90	CURVE C70	130.00 R	115° 55' 56"	S 64° 59' 1" W	220.41
CURVE C22	420.00 L	10° 13' 53"	N 51° 52' 6" W	74.90	CURVE C71	130.00 L	58° 6' 28"	N 86° 6' 14" W	126.26
CURVE C23	420.00 L	10° 13' 53"	N 41° 38' 13" W	74.90	CURVE C72	320.00 R	24° 33' 7"	S 77° 7' 5" W	136.08
CURVE C24	420.00 L	10° 13' 53"	N 31° 24' 20" W	74.90	CURVE C73	1160.00 L	33° 8' 58"	S 72° 49' 9" W	661.82
CURVE C25	420.00 L	10° 13' 53"	N 21° 10' 27" W	74.90	CURVE C74	120.00 R	35° 37' 21"	S 74° 3' 21" W	73.41
CURVE C50	49.00 L	47° 29' 51"	S 64° 50' 45" E	39.47	CURVE C75	29.00 L	54° 24' 8"	S 64° 39' 58" W	26.51
CURVE C51	100.00 R	32° 42' 6"	S 72° 14' 38" E	56.30	CURVE C76	38.00 R	108° 48' 17"	N 88° 7' 58" W	61.80
CURVE C52	275.00 L	32° 14' 23"	S 72° 0' 46" E	152.71	CURVE C77	29.00 L	54° 24' 7"	N 60° 55' 53" W	26.51
CURVE C53	29.00 L	54° 24' 8"	N 64° 39' 58" E	26.51	CURVE C78	295.00 R	32° 14' 23"	N 72° 0' 46" W	163.81
CURVE C54	38.00 R	108° 48' 17"	S 88° 7' 58" E	61.80	CURVE C79	80.00 L	32° 42' 6"	N 72° 14' 38" W	45.04
CURVE C55	29.00 L	54° 24' 8"	S 60° 55' 54" E	26.51	CURVE C80	165.00 L	12° 29' 43"	S 67° 22' 21" W	35.91
CURVE C56	100.00 L	35° 37' 21"	N 74° 3' 21" E	61.18	CURVE C81	190.00 L	11° 5' 46"	N 76° 12' 6" W	36.74
					CURVE C82	49.00 L	41° 31' 19"	S 70° 38' 39" W	34.74
					CURVE C83	380.00 L	27° 40' 08"	S 56° 49' 09" E	181.73

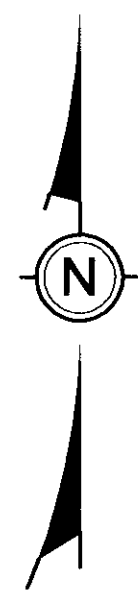


59 GRANT STREET
NEWARK, OH 43055
TEL. 740-344-5451
FAX. 740-344-5746

www.jobshenderson.com

CIVIL ENGINEERING & LAND SURVEYING SINCE 1965

PAUL E. & MIRIAM SWISHER, TRUSTEES
O.R. 296, PG. 2372
120.0 AC.



10/10/2006 09:51:16 AM jkingler P:\108-02\dgn\phase1\survey\SHEET5.dgn