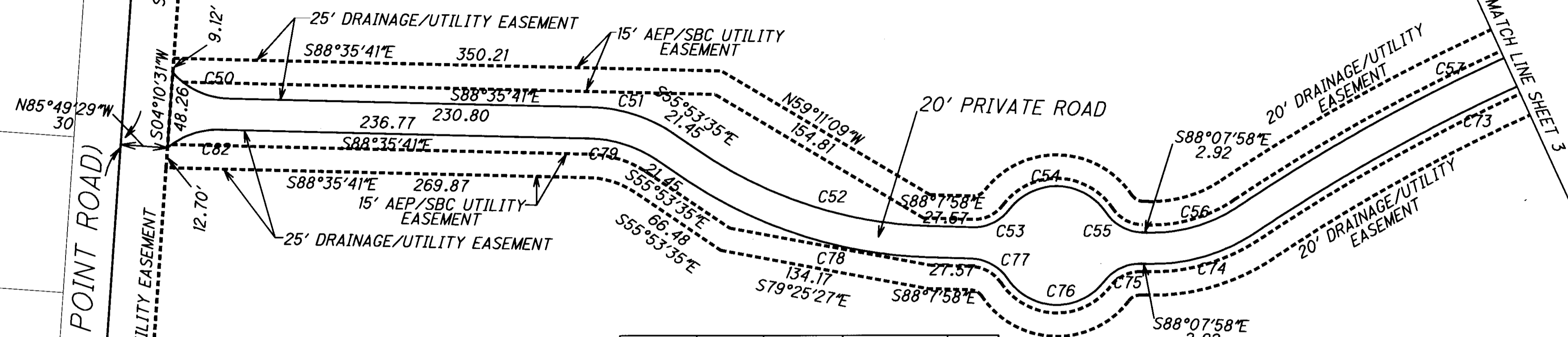


SLOT #418
 PLAT BOOK 5 PAGE 470

MARGARET L. ROBERTS
 O.R. 289, PAGE 161

SNUG HARBOR PHASE I

SITUATED IN THE STATE OF OHIO, COUNTY OF PERRY, TOWNSHIP OF THORN, BEING PART OF SECTION 6, TWP. 18 N, RNG. 17 W, CONGRESS LANDS.



TRIGLYPH HOLDINGS LLC.
 O.R. 332, PG. 2512
 113.63 AC.

Number	Radius	Delta	Direction	Dist
CURVE C1	50.00 R	62° 57' 52"	N 39° 10' 17" W	52.22
CURVE C2	60.00 L	14° 34' 56"	N 14° 58' 49" W	15.23
CURVE C5	510.00 L	8° 52' 20"	S 43° 35' 28" W	78.90
CURVE C6	510.00 L	9° 2' 23"	S 52° 32' 50" W	80.38
CURVE C7	510.00 L	4° 3' 28"	S 59° 5' 45" W	36.11
CURVE C9	185.00 L	10° 40' 21"	S 66° 27' 40" W	34.41
CURVE C10	185.00 L	26° 27' 11"	S 85° 1' 26" W	84.66
CURVE C11	210.00 L	8° 10' 59"	N 77° 39' 29" W	29.97
CURVE C12	210.00 L	2° 54' 47"	N 72° 6' 36" W	10.68
CURVE C13	50.00 R	56° 56' 39"	S 80° 52' 28" W	47.67
CURVE C14	60.00 L	13° 47' 4"	S 59° 17' 40" W	14.40
CURVE C15	60.00 L	91° 32' 30"	N 68° 2' 32" W	85.99
CURVE C20	420.00 L	3° 26' 17"	N 68° 56' 4" W	25.20
CURVE C21	420.00 L	10° 13' 53"	N 62° 5' 59" W	74.90
CURVE C22	420.00 L	10° 13' 53"	N 51° 52' 6" W	74.90
CURVE C23	420.00 L	10° 13' 53"	N 41° 38' 13" W	74.90
CURVE C24	420.00 L	10° 13' 53"	N 31° 24' 20" W	74.90
CURVE C25	420.00 L	10° 13' 53"	N 21° 10' 27" W	74.90
CURVE C50	49.00 L	47° 29' 51"	S 64° 50' 45" E	39.47
CURVE C51	100.00 R	32° 42' 6"	S 64° 36' 44" E	39.83
CURVE C52	275.00 L	32° 14' 23"	S 72° 0' 46" E	152.71
CURVE C53	29.00 L	54° 24' 8"	N 64° 39' 58" E	26.51
CURVE C54	38.00 R	108° 48' 17"	S 88° 7' 58" E	61.80
CURVE C55	29.00 L	54° 24' 8"	S 60° 55' 54" E	26.51
CURVE C56	100.00 L	35° 37' 21"	N 74° 3' 21" E	61.18
CURVE C57	1180.00 R	33° 8' 58"	N 72° 49' 9" E	673.23
CURVE C58	300.00 L	24° 33' 7"	N 77° 7' 5" E	127.57
CURVE C59	150.00 R	58° 6' 28"	S 86° 6' 14" E	145.69
CURVE C60	110.00 L	115° 55' 56"	N 64° 59' 1" E	186.50
CURVE C61	300.00 L	3° 8' 29"	N 5° 26' 47" E	16.45
CURVE C62	24.00 L	110° 15' 21"	N 51° 15' 8" W	39.38
CURVE C63	490.00 L	21° 58' 11"	S 50° 8' 24" W	186.74
CURVE C64	400.00 L	54° 35' 42"	N 43° 21' 21" W	366.89
CURVE C65	50.00 L	50° 28' 44"	S 84° 6' 25" W	42.64
CURVE C66	60.00 R	107° 25' 23"	N 67° 25' 15" W	96.73
CURVE C67	50.00 L	56° 56' 39"	N 42° 10' 53" W	47.67
CURVE C68	24.00 L	94° 22' 27"	S 51° 3' 47" W	35.21
CURVE C69	320.00 R	3° 8' 29"	S 5° 26' 47" W	17.54
CURVE C70	130.00 R	115° 55' 56"	S 64° 59' 1" W	220.41
CURVE C71	130.00 L	58° 6' 28"	N 86° 6' 14" W	126.26
CURVE C72	320.00 R	24° 33' 7"	S 77° 7' 5" W	136.08
CURVE C73	1160.00 L	33° 8' 58"	S 72° 49' 9" W	661.82
CURVE C74	120.00 R	35° 37' 21"	S 74° 3' 21" W	73.41
CURVE C75	29.00 L	54° 24' 8"	S 64° 39' 58" W	26.51
CURVE C76	38.00 R	108° 48' 17"	N 88° 7' 58" W	61.80
CURVE C77	29.00 L	54° 24' 7"	N 60° 55' 53" W	26.51
CURVE C78	295.00 R	32° 14' 23"	N 72° 0' 46" W	163.81
CURVE C79	80.00 L	32° 42' 6"	N 72° 14' 38" W	45.04
CURVE C80	165.00 L	12° 29' 43"	S 67° 22' 21" W	35.91
CURVE C81	190.00 L	11° 5' 46"	N 76° 12' 6" W	36.74
CURVE C82	49.00 L	41° 31' 19"	S 70° 38' 39" W	34.74
CURVE C83	510.00 R	1° 57' 58"	N 38° 10' 19" E	17.50

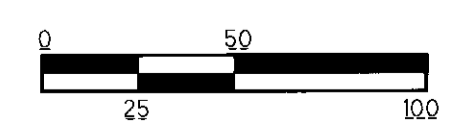
SETBACK
 FRONT -
 SIDE - 1
 UNLESS

DRAINAGE
 FRONT -
 UNLESS

- LEGEND**
-: BUILDING SETBACK
 - : DRAINAGE EASEMENT
 - I.P.F.: IRON PIN FOUND
 - ⊙: RAILROAD SPIKE FOUND
 - ⊙: CONCRETE MONUMENT SET
 - I.P.S.: IRON PIN SET

SETBACKS:
 FRONT - 20'
 SIDE - 10'
 UNLESS OTHERWISE SPECIFIED.

DRAINAGE EASEMENT:
 FRONT - 20'
 UNLESS OTHERWISE SPECIFIED.



HORIZONTAL
 SCALE IN FEET

59 GRANT STREET
 NEWARK, OH 43055
 TEL. 740-344-5451
 FAX. 740-344-5746

10/10/2006 09:27:13 AM kringler P:\T08-02\dgn\phase I survey\SHEET2.dgn