

SNUG HARBOR PHASE II

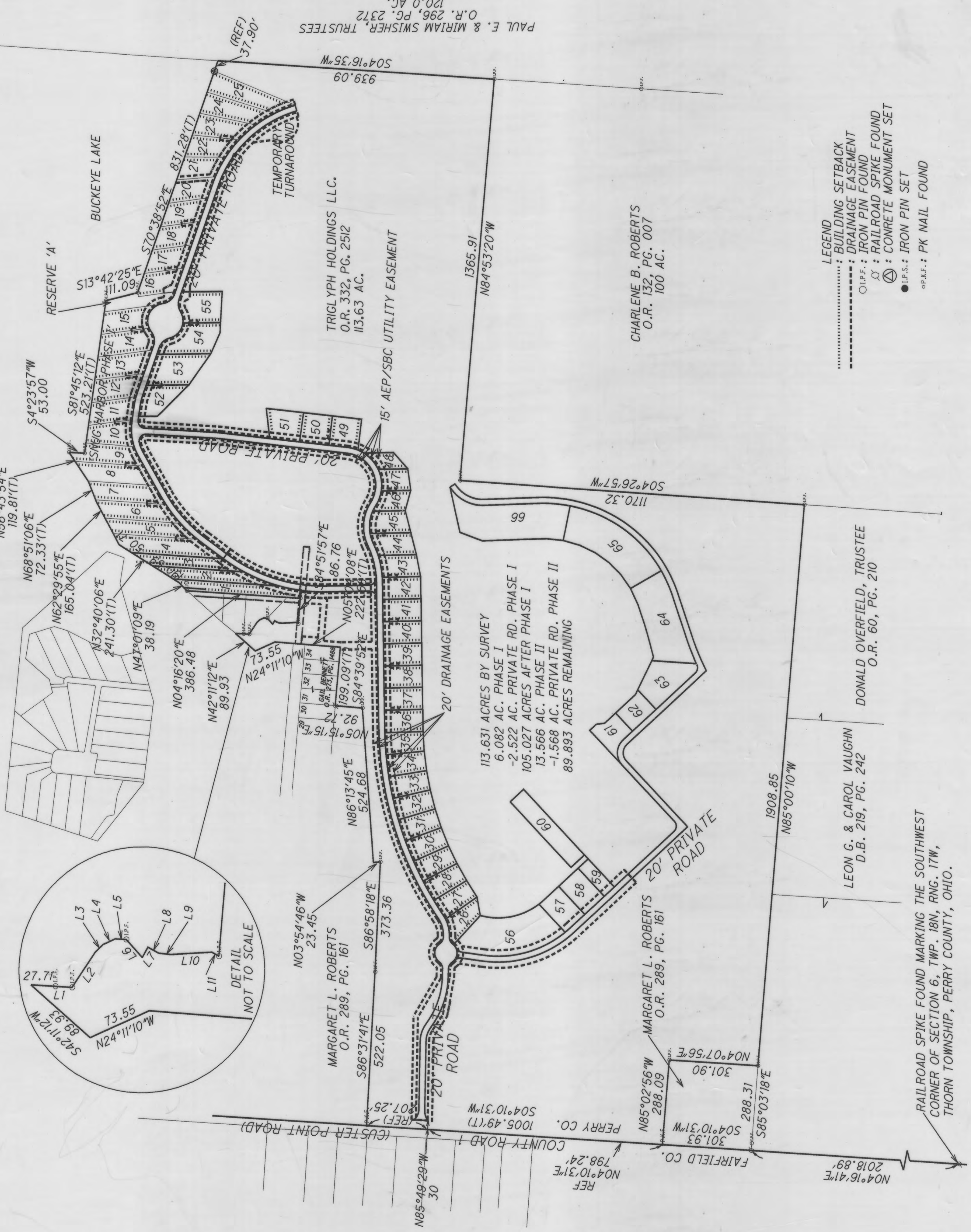
SITUATE IN THE STATE OF OHIO, COUNTY OF PERRY, TOWNSHIP OF THORN, BEING PART OF SECTION 6, TWP. 18 N, RNG. 17 W, CONGRESS LANDS.

20070001675
Filed for Record in
Perry County, Ohio
BARBARA J. FED.
04-08-2007 at 09:22 AM
PLAT 374.00

JOBS HENDERSON & ASSOCIATES INC.
CIVIL ENGINEERING & LAND SURVEYING SINCE 1965
www.jobshenderson.com
50 GRANT STREET
NEWARK, OH 43065
TEL 740-344-5451
FAX 740-344-5746

HORIZONTAL SCALE IN FEET
0 100 200 400

LINE	LENGTH	BEARING
L1	46.67	S04°04'02"W
L2	47.50	S56°07'07"E
L3	12.54	S43°39'04"E
L4	14.99	S24°52'35"E
L5	12.49	S02°54'13"W
L6	27.44	S48°47'25"W
L7	13.36	S60°52'01"E
L8	14.10	S29°29'38"W
L9	13.53	S05°57'01"W
L10	46.46	S02°31'27"E
L11	9.32	S29°57'11"W



LEGEND
 - - - - - BUILDING SETBACK
 - - - - - DRAINAGE EASEMENT
 O.I.P.F.: IRON PIN FOUND
 X: RAILROAD SPIKE FOUND
 ●: CONCRETE MONUMENT SET
 ●: IRON PIN SET
 o.p.f.: IRON PIN SET