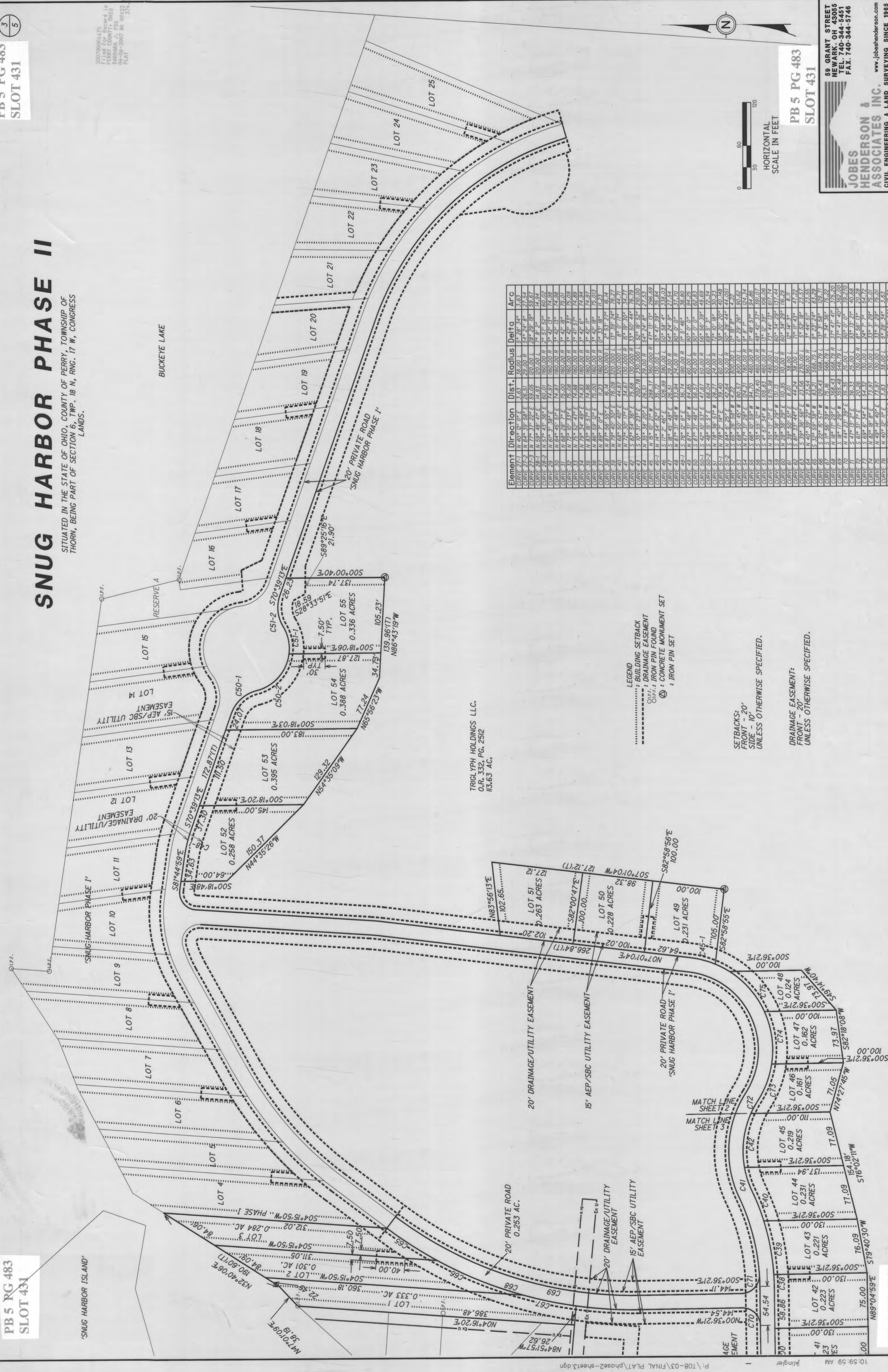


# SNUG HARBOR PHASE II

SITUATED IN THE STATE OF OHIO, COUNTY OF PERRY, TOWNSHIP OF THORN, BEING PART OF SECTION 6, TWP. 18 N, RING. 17 W, CONGRESS LANDS.

20070904475  
Filed for Record in  
PERRY COUNTY, OHIO  
RECORDED IN  
04-03-2007 AC 07372  
PLAT

BUCKEYE LAKE



TRIGLYPH HOLDINGS LLC.  
O.P.R. 332, PG. 2512  
113.63 AC.

- LEGEND
- ..... BUILDING SETBACK
  - ..... DRAINAGE EASEMENT
  - ..... 15' AEP/SBC UTILITY EASEMENT
  - ..... 20' DRAINAGE/UTILITY EASEMENT
  - ..... 20' PRIVATE ROAD PHASE I
  - ..... 20' PRIVATE ROAD
  - ..... CONCRETE MONUMENT SET
  - ..... IRON PIN SET

SETBACKS:  
FRONT - 20'  
SIDE - 10'  
UNLESS OTHERWISE SPECIFIED.

DRAINAGE EASEMENT:  
FRONT - 20'  
UNLESS OTHERWISE SPECIFIED.

Element	Direction	Dist.	Radius	Delta	Arc
CURVE 27-1	N 40° 32' 11" E	3.03	36.000 R	15° 28' 34"	3.63
CURVE 27-2	N 64° 39' 58" E	26.51	29.000 R	54° 24' 8"	27.54
CURVE 27-3	N 77° 37' 22" E	59.05	120.000 L	28° 29' 19"	59.67
CURVE 28-1	N 59° 48' 41" E	14.83	120.000 R	7° 8' 2"	14.94
CURVE 28-2	N 57° 43' 36" E	60.01	160.000 R	2° 57' 52"	60.02
CURVE 29	N 67° 38' 51" E	74.97	160.000 R	3° 42' 13"	74.98
CURVE 30	N 68° 28' 7" E	75.00	160.000 R	3° 42' 18"	75.01
CURVE 31	N 72° 07' 33" E	75.00	160.000 R	3° 42' 33"	75.09
CURVE 32	N 75° 52' 47" E	74.88	160.000 R	3° 41' 57"	74.89
CURVE 33	N 79° 34' 49" E	74.93	160.000 R	3° 42' 6"	74.94
CURVE 34	N 83° 16' 57" E	74.86	160.000 R	3° 42' 18"	74.93
CURVE 35	N 87° 07' 07" E	74.86	160.000 R	3° 42' 18"	74.93
CURVE 36	N 89° 37' 07" E	74.86	160.000 R	3° 42' 18"	74.93
CURVE 37	N 92° 07' 07" E	74.86	160.000 R	3° 42' 18"	74.93
CURVE 38	N 94° 37' 07" E	74.86	160.000 R	3° 42' 18"	74.93
CURVE 39	N 97° 07' 07" E	74.86	160.000 R	3° 42' 18"	74.93
CURVE 40	N 99° 37' 07" E	74.86	160.000 R	3° 42' 18"	74.93
CURVE 41	N 102° 07' 07" E	74.86	160.000 R	3° 42' 18"	74.93
CURVE 42	N 104° 37' 07" E	74.86	160.000 R	3° 42' 18"	74.93
CURVE 43	N 107° 07' 07" E	74.86	160.000 R	3° 42' 18"	74.93
CURVE 44	N 109° 37' 07" E	74.86	160.000 R	3° 42' 18"	74.93
CURVE 45	N 112° 07' 07" E	74.86	160.000 R	3° 42' 18"	74.93
CURVE 46	N 114° 37' 07" E	74.86	160.000 R	3° 42' 18"	74.93
CURVE 47	N 117° 07' 07" E	74.86	160.000 R	3° 42' 18"	74.93
CURVE 48	N 119° 37' 07" E	74.86	160.000 R	3° 42' 18"	74.93
CURVE 49	N 122° 07' 07" E	74.86	160.000 R	3° 42' 18"	74.93
CURVE 50	N 124° 37' 07" E	74.86	160.000 R	3° 42' 18"	74.93
CURVE 51	N 127° 07' 07" E	74.86	160.000 R	3° 42' 18"	74.93
CURVE 52	N 129° 37' 07" E	74.86	160.000 R	3° 42' 18"	74.93
CURVE 53	N 132° 07' 07" E	74.86	160.000 R	3° 42' 18"	74.93
CURVE 54	N 134° 37' 07" E	74.86	160.000 R	3° 42' 18"	74.93
CURVE 55	N 137° 07' 07" E	74.86	160.000 R	3° 42' 18"	74.93
CURVE 56	N 139° 37' 07" E	74.86	160.000 R	3° 42' 18"	74.93
CURVE 57	N 142° 07' 07" E	74.86	160.000 R	3° 42' 18"	74.93
CURVE 58	N 144° 37' 07" E	74.86	160.000 R	3° 42' 18"	74.93
CURVE 59	N 147° 07' 07" E	74.86	160.000 R	3° 42' 18"	74.93
CURVE 60	N 149° 37' 07" E	74.86	160.000 R	3° 42' 18"	74.93
CURVE 61	N 152° 07' 07" E	74.86	160.000 R	3° 42' 18"	74.93
CURVE 62	N 154° 37' 07" E	74.86	160.000 R	3° 42' 18"	74.93
CURVE 63	N 157° 07' 07" E	74.86	160.000 R	3° 42' 18"	74.93
CURVE 64	N 159° 37' 07" E	74.86	160.000 R	3° 42' 18"	74.93
CURVE 65	N 162° 07' 07" E	74.86	160.000 R	3° 42' 18"	74.93
CURVE 66	N 164° 37' 07" E	74.86	160.000 R	3° 42' 18"	74.93
CURVE 67	N 167° 07' 07" E	74.86	160.000 R	3° 42' 18"	74.93
CURVE 68	N 169° 37' 07" E	74.86	160.000 R	3° 42' 18"	74.93
CURVE 69	N 172° 07' 07" E	74.86	160.000 R	3° 42' 18"	74.93
CURVE 70	N 174° 37' 07" E	74.86	160.000 R	3° 42' 18"	74.93
CURVE 71	N 177° 07' 07" E	74.86	160.000 R	3° 42' 18"	74.93
CURVE 72	N 179° 37' 07" E	74.86	160.000 R	3° 42' 18"	74.93
CURVE 73	N 182° 07' 07" E	74.86	160.000 R	3° 42' 18"	74.93
CURVE 74	N 184° 37' 07" E	74.86	160.000 R	3° 42' 18"	74.93
CURVE 75	N 187° 07' 07" E	74.86	160.000 R	3° 42' 18"	74.93
CURVE 76	N 189° 37' 07" E	74.86	160.000 R	3° 42' 18"	74.93
CURVE 77	N 192° 07' 07" E	74.86	160.000 R	3° 42' 18"	74.93

PB 5 PG 483  
SLOT 431

50 GRANT STREET  
NEWARK, OHIO 43055  
TEL. 740-344-5055  
FAX. 740-344-5748

www.jobshenderson.com

**JOBS HENDERSON & ASSOCIATES INC.**  
CIVIL ENGINEERING & LAND SURVEYING SINCE 1965