

# SNUG HARBOR PHASE II

SITUATED IN THE STATE OF OHIO, COUNTY OF PERRY, TOWNSHIP OF THORN, BEING PART OF SECTION 6, T1P. 18 N, R1G. 17 W, CONGRESS LANDS.

PB 5 PG482  
SLOT 430

PB 5 PG482  
SLOT 430

MARGARET L. ROBERTS  
O.R. 289, PAGE 161

TRIGLYPH HOLDINGS LLC.  
O.R. 332, PG. 2512  
113.63 AC.

CHARLENE B. ROBERTS  
O.R. 152, PG. 007  
100 AC.

PB 5 PG 482  
SLOT 430

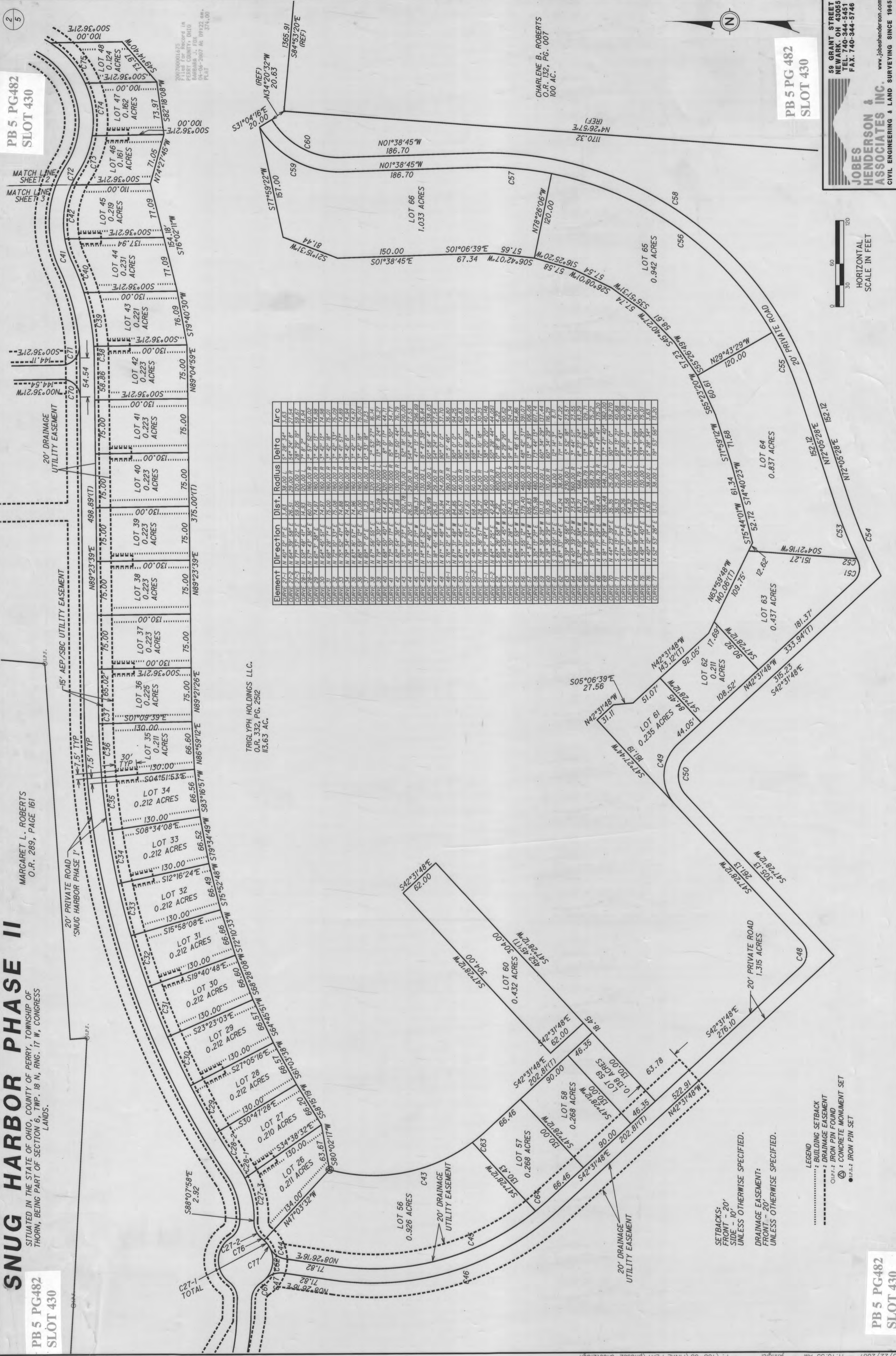
**JOBS HENDERSON & ASSOCIATES INC.**  
CIVIL ENGINEERING & LAND SURVEYING SINCE 1985

59 GRANT STREET  
NEWARK, OH 43085  
TEL: 740-344-5758  
FAX: 740-344-5746

www.jobshenderson.com

HORIZONTAL SCALE IN FEET

0 30 60 120



Element	Direction	Dist.	Radius	Delta	Arc
CURVE 27-1	N 40° 50' 11" E	35.00	L	5° 28' 34"	3.63
CURVE 27-2	N 40° 50' 11" E	35.00	L	5° 28' 34"	3.63
CURVE 27-3	N 71° 37' 22" E	59.05	L	28° 29' 18"	59.84
CURVE 28-1	N 59° 48' 41" E	14.93	L	7° 8' 2"	14.94
CURVE 28-2	N 57° 43' 36" E	60.01	R	2° 57' 52"	60.02
CURVE 29	N 61° 37' 38" E	74.97	R	3° 42' 13"	74.98
CURVE 30	N 64° 45' 51" E	74.97	R	3° 42' 13"	74.98
CURVE 31	N 72° 10' 33" E	15.00	R	3° 42' 33"	15.00
CURVE 32	N 75° 32' 47" E	74.89	R	3° 47' 57"	74.89
CURVE 33	N 79° 34' 49" E	74.93	R	3° 42' 6"	74.94
CURVE 34	N 83° 15' 57" E	74.96	R	3° 42' 11"	74.97
CURVE 35	N 86° 59' 12" E	75.00	R	3° 42' 18"	75.00
CURVE 36	N 90° 42' 55" E	75.00	R	3° 42' 27"	75.00
CURVE 37	N 94° 27' 39" E	75.00	R	3° 42' 37"	75.00
CURVE 38	N 98° 12' 24" E	75.00	R	3° 42' 47"	75.00
CURVE 39	N 101° 57' 08" E	75.00	R	3° 42' 57"	75.00
CURVE 40	N 105° 41' 52" E	75.00	R	3° 43' 07"	75.00
CURVE 41	N 109° 26' 36" E	75.00	R	3° 43' 17"	75.00
CURVE 42	N 113° 11' 20" E	75.00	R	3° 43' 27"	75.00
CURVE 43	N 116° 56' 04" E	75.00	R	3° 43' 37"	75.00
CURVE 44	N 120° 40' 48" E	75.00	R	3° 43' 47"	75.00
CURVE 45	N 124° 25' 32" E	75.00	R	3° 43' 57"	75.00
CURVE 46	N 128° 10' 16" E	75.00	R	3° 44' 07"	75.00
CURVE 47	N 131° 55' 00" E	75.00	R	3° 44' 17"	75.00
CURVE 48	N 135° 39' 44" E	75.00	R	3° 44' 27"	75.00
CURVE 49	N 139° 24' 28" E	75.00	R	3° 44' 37"	75.00
CURVE 50	N 143° 09' 12" E	75.00	R	3° 44' 47"	75.00
CURVE 51	N 146° 53' 56" E	75.00	R	3° 44' 57"	75.00
CURVE 52	N 150° 38' 40" E	75.00	R	3° 45' 07"	75.00
CURVE 53	N 154° 23' 24" E	75.00	R	3° 45' 17"	75.00
CURVE 54	N 158° 08' 08" E	75.00	R	3° 45' 27"	75.00
CURVE 55	N 161° 52' 52" E	75.00	R	3° 45' 37"	75.00
CURVE 56	N 165° 37' 36" E	75.00	R	3° 45' 47"	75.00
CURVE 57	N 169° 22' 20" E	75.00	R	3° 45' 57"	75.00
CURVE 58	N 173° 07' 04" E	75.00	R	3° 46' 07"	75.00
CURVE 59	N 176° 51' 48" E	75.00	R	3° 46' 17"	75.00
CURVE 60	N 180° 36' 32" E	75.00	R	3° 46' 27"	75.00
CURVE 61	N 184° 21' 16" E	75.00	R	3° 46' 37"	75.00
CURVE 62	N 188° 06' 00" E	75.00	R	3° 46' 47"	75.00
CURVE 63	N 191° 50' 44" E	75.00	R	3° 46' 57"	75.00
CURVE 64	N 195° 35' 28" E	75.00	R	3° 47' 07"	75.00
CURVE 65	N 199° 20' 12" E	75.00	R	3° 47' 17"	75.00
CURVE 66	N 203° 04' 56" E	75.00	R	3° 47' 27"	75.00
CURVE 67	N 206° 49' 40" E	75.00	R	3° 47' 37"	75.00
CURVE 68	N 210° 34' 24" E	75.00	R	3° 47' 47"	75.00
CURVE 69	N 214° 19' 08" E	75.00	R	3° 47' 57"	75.00
CURVE 70	N 218° 03' 52" E	75.00	R	3° 48' 07"	75.00
CURVE 71	N 221° 48' 36" E	75.00	R	3° 48' 17"	75.00
CURVE 72	N 225° 33' 20" E	75.00	R	3° 48' 27"	75.00
CURVE 73	N 229° 18' 04" E	75.00	R	3° 48' 37"	75.00
CURVE 74	N 233° 02' 48" E	75.00	R	3° 48' 47"	75.00
CURVE 75	N 236° 47' 32" E	75.00	R	3° 48' 57"	75.00
CURVE 76	N 240° 32' 16" E	75.00	R	3° 49' 07"	75.00
CURVE 77	N 244° 17' 00" E	75.00	R	3° 49' 17"	75.00

SETBACKS:  
FRONT - 20'  
SIDE - 10'  
UNLESS OTHERWISE SPECIFIED.

DRAINAGE EASEMENT:  
FRONT - 20'  
SIDE - 20'  
UNLESS OTHERWISE SPECIFIED.

LEGEND

.....: BUILDING SETBACK

-----: DRAINAGE EASEMENT

○: IRON PIN FOUND

●: CONCRETE MONUMENT SET

●: IRON PIN SET

PB 5 PG482  
SLOT 430