

20040004063  
Filed for Record in  
PERRY COUNTY, OHIO  
BARBARA J. FOX  
06-23-2004 08:12:20  
PLH



# CENTERLINE PLAT

## PER-204-13.885 (8.63)

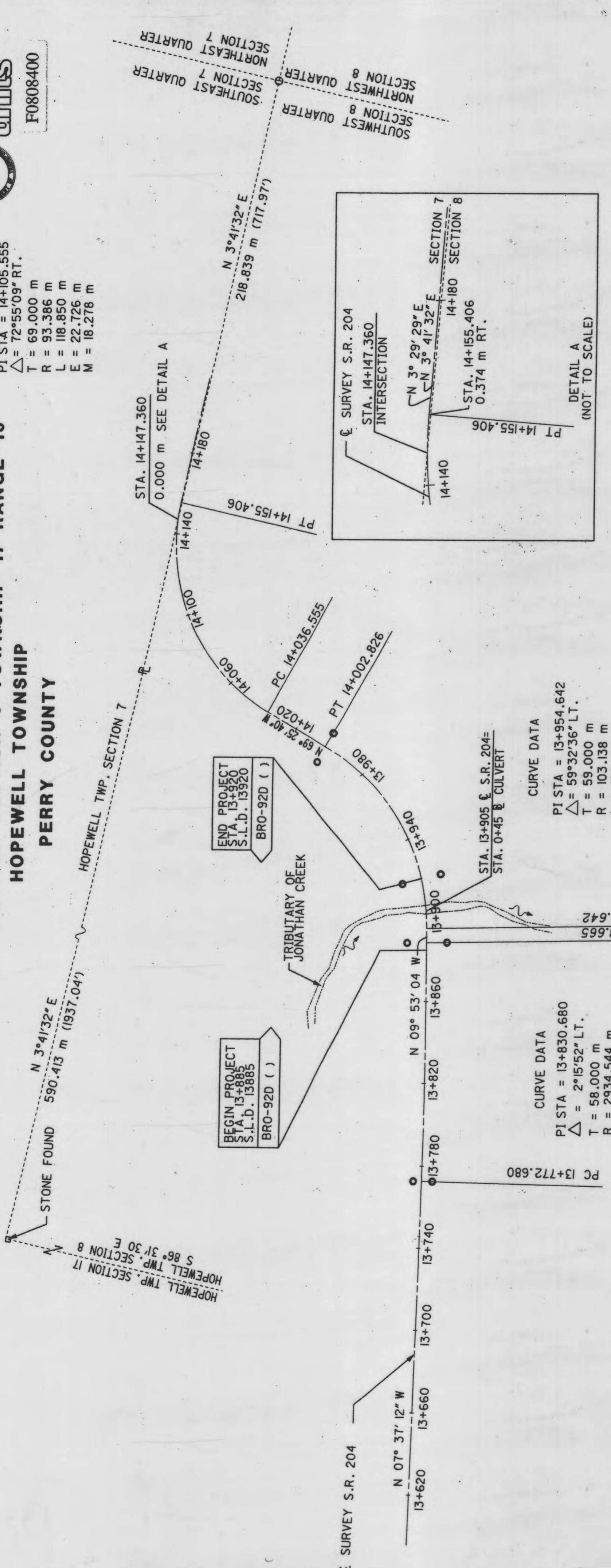
### SOUTHWEST QUARTER SECTION 8 TOWNSHIP 17 RANGE 16

#### HOPEWELL TOWNSHIP

#### PERRY COUNTY

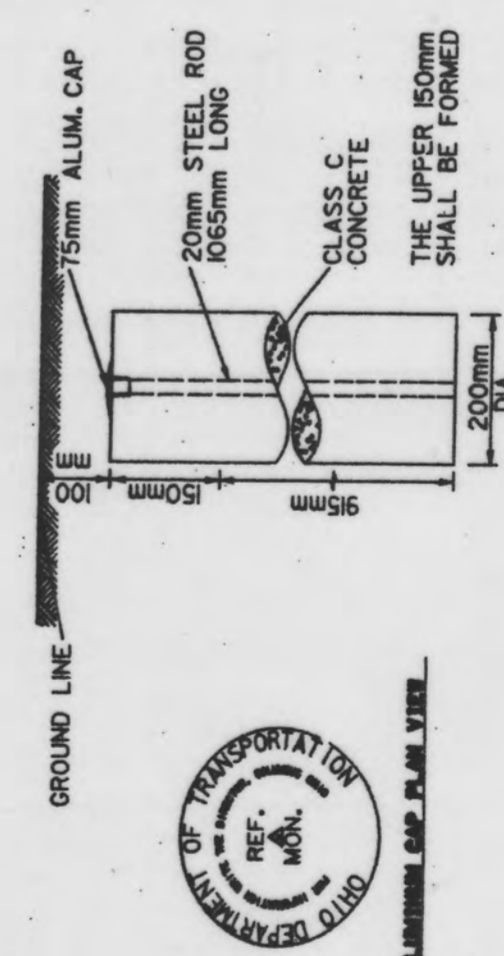
STATE JOB NO. 053540	P.L.D. NO. 11334	FEDERAL PROJECT NO. BRO-92D ( )	SCALE 1:100
CENTERLINE PLAT			DATE 4-21-97
PER-204-13.885 (8.63)			REV. DATE DESCRIPTION
			COMPLETION DATE: 4-21-97

**CURVE DATA**  
 P.I. STA = 14+105.555  
 $\Delta = 72^{\circ}55'09''$  RT.  
 T = 69.000 m  
 R = 93.386 m  
 L = 118.850 m  
 E = 22.726 m  
 M = 18.278 m



CENTERLINE REFERENCE MONUMENTS ARE SHOWN ON STANDARD CONSTRUCTION DRAWINGS RM-LM (REV. 6/95). THE PLACING OF THE MONUMENTS SHALL BE DONE UNDER THE DIRECTION OF A PROFESSIONAL SURVEYOR, BY THE HIGHWAY CONTRACTOR DURING CONSTRUCTION. THE MONUMENTS SHALL BE SET WITHIN A TOLERANCE NO GREATER THAN +/- 6mm (0.02'). ANY ALTERATIONS SHALL HAVE PRIOR APPROVAL IN WRITING FROM THE DISTRICT RIGHT OF WAY ADMINISTRATOR/SUPERVISOR. UPON SETTING THE MONUMENTS, A WRITTEN STATEMENT SHALL BE PROVIDED TO THE DISTRICT RIGHT OF WAY SUPERVISOR STATING THE LOCATION OF MONUMENTS SET, SIGNED AND SEALED BY A PROFESSIONAL SURVEYOR.

CENTERLINE REFERENCE MONUMENTS (O) ARE TO BE PLACED AT THE FOLLOWING LOCATIONS			
QUANTITY	STATION	OFFSET	LT./RT.
1	P.C. STA. 13+772.680	4.500 m	LT.
1	P.C. STA. 13+772.680	14.750	RT.
1	P.T. STA. 13+888.665	16.407	LT.
1	P.T. STA. 13+888.665	10.000 m	RT.
1	P.O.C. STA. 13+920.000	10.000 m	LT.
1	P.O.C. STA. 13+920.000	10.000 m	RT.
1	P.I. STA. 14+002.826	8.500 m	LT.
1	P.I. STA. 14+002.826	7.500 m	RT.
TOTAL CARRIED TO GENERAL SUMMARY 8			



THOMAS E. ANDREWS  
 P.S. 54964  
 DATE 06-21-04

**NOTE:** THE EXISTING RIGHT OF WAY WIDTH AND LOCATION WERE DETERMINED USING DOCUMENTATION ON FILE FROM THE OHIO DEPARTMENT OF TRANSPORTATION, DISTRICT 5 OFFICE, JACKSONTOWN, OHIO.

**BASIS FOR BEARINGS**  
 ALL BEARINGS ARE FOR PROJECT USE ONLY. THESE BEARINGS ARE BASED UPON AN ASSUMED MERIDIAN AND ARE USED TO DELINEATE ANGLES ONLY.  
 I HEREBY CERTIFY THAT THIS PLAT IS A TRUE DELINEATION OF A SURVEY PERFORMED BY THE OHIO DEPARTMENT OF TRANSPORTATION IN 1996 BY DISTRICT 5, OHIO DEPARTMENT OF TRANSPORTATION.

RECEIVED 6-25-04  
 RECORDED 6-25-04  
 BOOK 25-000 PAGE 211  
 COUNTY RECORDER

22	25
1/4	