

MATCH LINE

Portions of the area shown cross-hatched hereon affecting Lots 1 through 13, are subject to certain conditions contained in an instrument of prior conveyance, of record in Official Record Volume 132, Page 255 and re-recorded in Official Record Volume 133, Page 168, both references to the records of the Recorder's Office, Perry County, Ohio.



NORTH

GRAPHIC SCALE



(IN FEET)
1 inch = 100 ft.

HERON BAY AMENDED

ALL DISTANCES SHOWN ON CURVES ARE CHORD DISTANCES.

SECTION 26
SECTION 4

PERRY COUNTY
OHIO

MATCH LINE

MATCH LINE

MATCH LINE

MATCH LINE

MATCH LINE

MATCH LINE

MATCH LINE

MATCH LINE

MATCH LINE

MATCH LINE

SECTION 27
SECTION 26

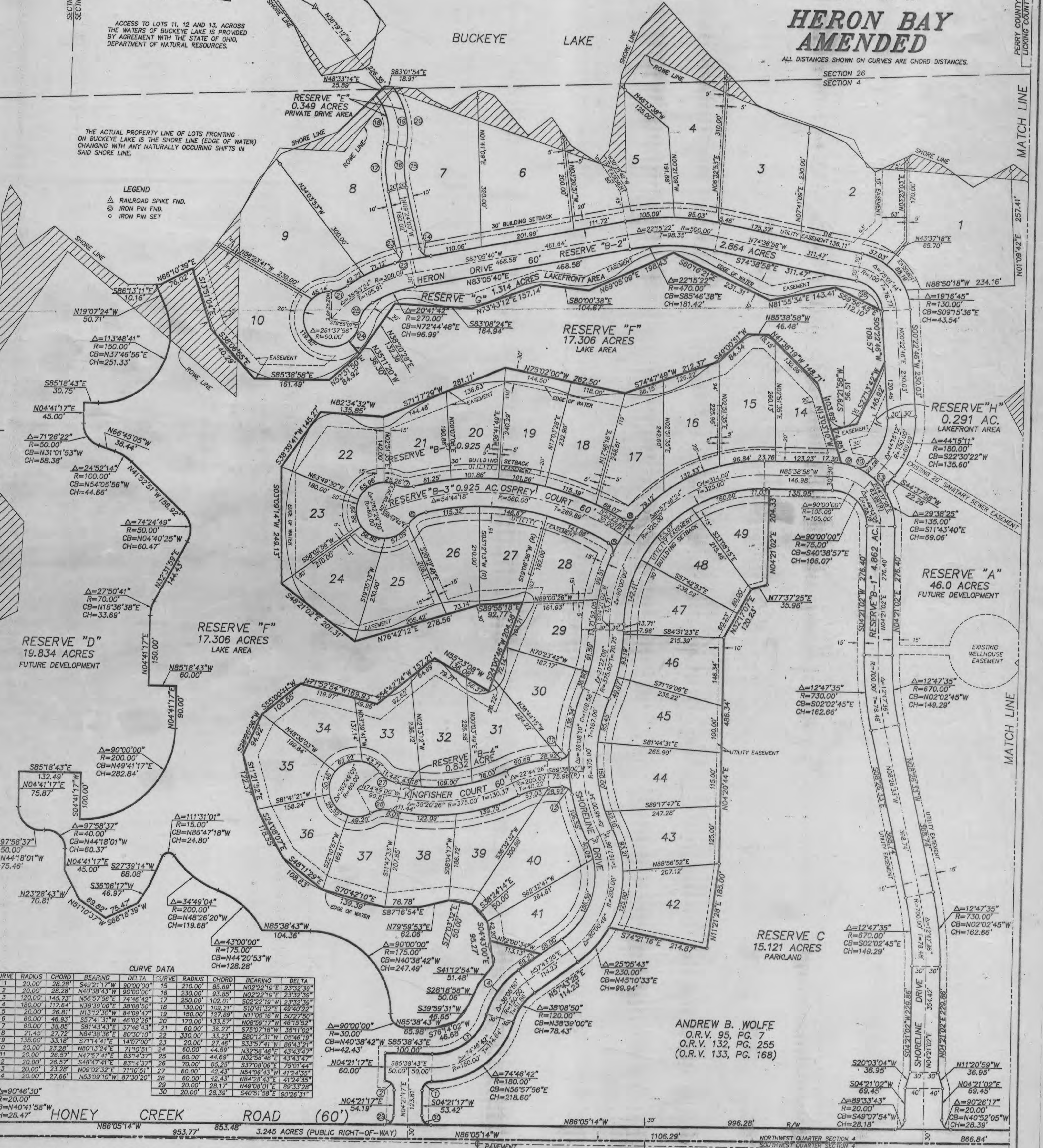
SECTION 27
SECTION 26

ACCESS TO LOTS 11, 12 AND 13, ACROSS THE WATERS OF BUCKEYE LAKE IS PROVIDED BY AGREEMENT WITH THE STATE OF OHIO, DEPARTMENT OF NATURAL RESOURCES.

BUCKEYE LAKE

THE ACTUAL PROPERTY LINE OF LOTS FRONTING ON BUCKEYE LAKE IS THE SHORE LINE (EDGE OF WATER) CHANGING WITH ANY NATURALLY OCCURRING SHIFTS IN SAID SHORE LINE.

LEGEND
▲ RAILROAD SPIKE FND.
● IRON PIN FND.
○ IRON PIN SET



CURVE DATA

CURVE	RADIUS	CHORD	BEARING	DELTA	CURVE	RADIUS	CHORD	BEARING	DELTA
1	20.00	28.28	S49°21'17"W	90°00'00"	15	210.00	93.85	N02°22'15"E	23°32'39"
2	20.00	28.28	N40°38'43"W	90°00'00"	16	230.00	93.85	S02°22'19"W	23°32'39"
3	120.00	145.73	N86°57'56"E	74°46'42"	17	250.00	102.01	S02°22'19"W	23°32'39"
4	180.00	117.64	N38°39'00"E	38°08'50"	18	130.00	109.21	S10°41'32"E	49°40'22"
5	20.00	26.81	N13°12'30"W	84°09'47"	19	150.00	127.89	N11°05'16"W	50°27'50"
6	60.00	46.93	S57°4'31"W	46°02'26"	20	170.00	133.57	N08°59'17"W	46°19'52"
7	60.00	39.95	S81°43'43"E	37°46'43"	21	60.00	36.27	S75°07'18"W	35°11'02"
8	135.00	33.18	N84°38'36"E	60°30'10"	22	330.00	33.23	S80°12'31"W	05°46'19"
9	20.00	21.45	S71°44'41"E	14°07'00"	23	20.00	27.46	S33°57'41"W	86°43'21"
10	20.00	23.28	N80°13'24"E	71°10'51"	24	60.00	44.69	N32°58'46"E	43°43'47"
11	20.00	26.57	N47°57'41"E	83°14'37"	25	60.00	65.25	S37°08'06"E	75°01'44"
12	20.00	26.57	S48°47'41"E	83°14'37"	26	70.00	65.25	S37°08'06"E	75°01'44"
13	20.00	23.28	N09°02'32"E	71°10'51"	27	60.00	42.43	N54°08'43"W	41°24'35"
14	20.00	27.66	N83°09'10"W	87°30'20"	28	60.00	28.39	S40°51'58"E	90°26'31"
15	90°46'30"	R=20.00	CB=N40°41'58"W	CH=28.47	29	20.00	28.17	N48°08'01"E	85°33'28"
16	90°46'30"	R=20.00	CB=N40°41'58"W	CH=28.47	30	20.00	28.39	S40°51'58"E	90°26'31"

ANDREW B. WOLFE
O.R.V. 95, PG. 7
O.R.V. 132, PG. 255
(O.R.V. 133, PG. 168)