

☉ CURVE DATA

EMPIRE ROAD

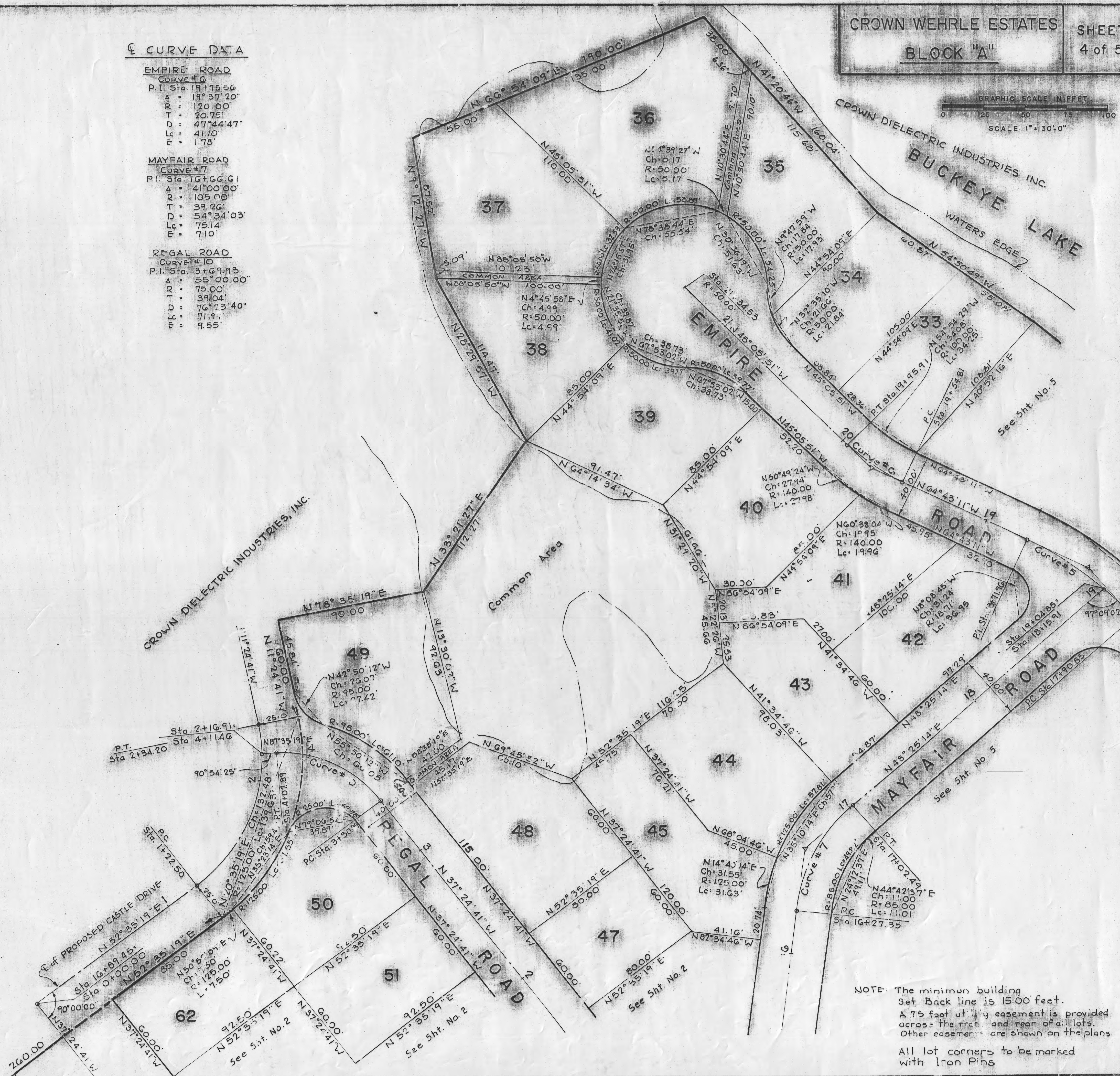
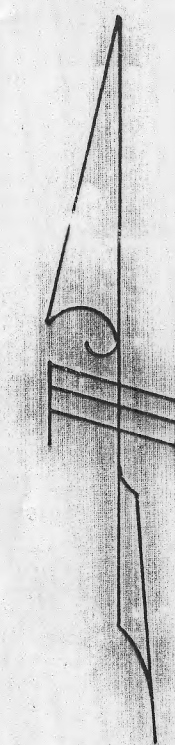
CURVE # 6
P.I. Sta 19+75.56
A = 19° 37' 20"
R = 120.00
T = 20.75
D = 47° 44' 47"
Lc = 41.10
E = 1.78

MAYFAIR ROAD

CURVE # 7
P.I. Sta 16+66.61
A = 41° 00' 00"
R = 105.00
T = 39.26
D = 54° 34' 03"
Lc = 75.14
E = 7.10

REGAL ROAD

CURVE # 10
P.I. Sta 3+69.93
A = 55° 00' 00"
R = 75.00
T = 39.04
D = 76° 23' 40"
Lc = 71.9
E = 9.55



NOTE: The minimum building
Set Back line is 15.00 feet.
A 7.5 foot utility easement is provided
across the front and rear of all lots.
Other easements are shown on the plans.
All lot corners to be marked
with Iron Pins