

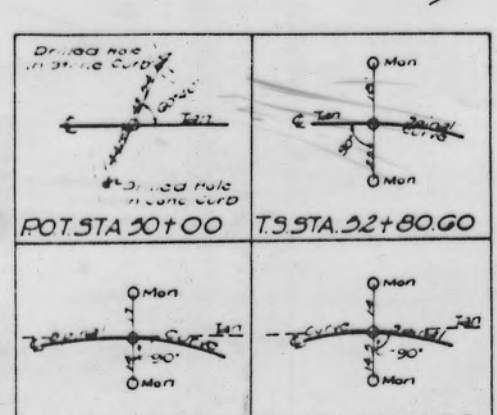
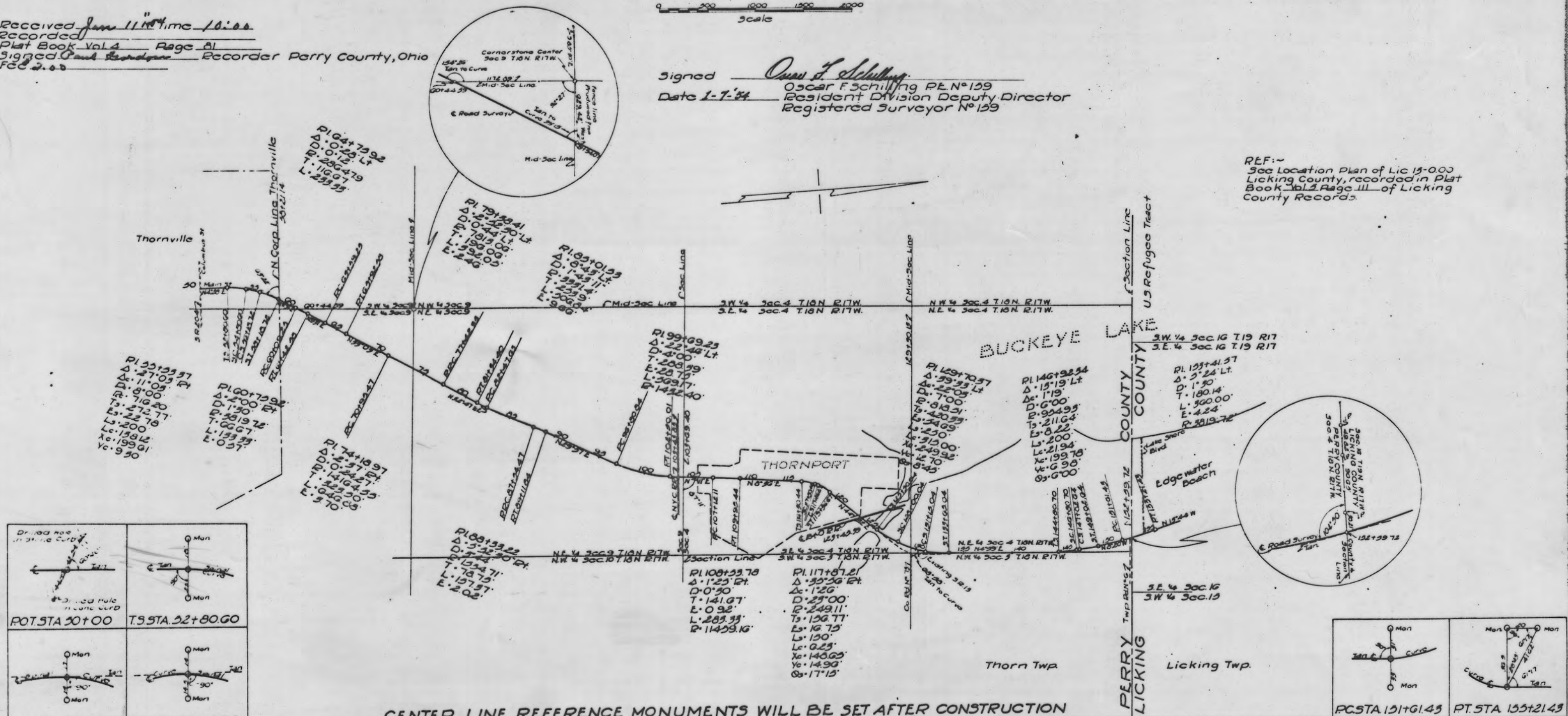
#42778

LOCATION PLAN PER.~13-39.36-39.51 PERRY COUNTY

Received from W. H. H. H. H.
Recorded in Plat Book Vol. 4 Page 21
39903 Land Recorder Perry County, Ohio
R.C. 2.03

Signed Oscar F. Schilling
Oscar F. Schilling, P.E. No. 129
Deputy Director
Registered Surveyor No. 129

REF. - See Location Plan of Lic 19-000
Licking County, recorded in Plat
Book 342, Page 111 of Licking
County Records.



CENTER LINE REFERENCE MONUMENTS WILL BE SET AFTER CONSTRUCTION

 ROT STA 201+00	 TS STA 22+80.00	 SC STA 24+80.00	 CS STA 26+18.72	 ST STA 28+18.72	 PC STA 30+09.23	 PT STA 32+20	 PPC STA 34+23	 PC STA 36+23	 PT STA 38+11.04	 PT STA 40+20.00	 PT STA 42+44	 ST STA 44+56.71	 SC STA 46+04	 ST STA 48+04	 TS STA 50+70	 CS STA 52+24
 PT STA 54+20	 PC STA 56+23	 PC STA 58+23	 PT STA 60+40	 PPC STA 62+44	 PC STA 64+44	 PT STA 66+11.04	 PT STA 68+20.00	 TS STA 70+44	 TS STA 72+04	 CS STA 74+04	 PT STA 76+00	 SC STA 78+00	 TS STA 80+00	 CS STA 82+00	 TS STA 84+00	 CS STA 86+00