

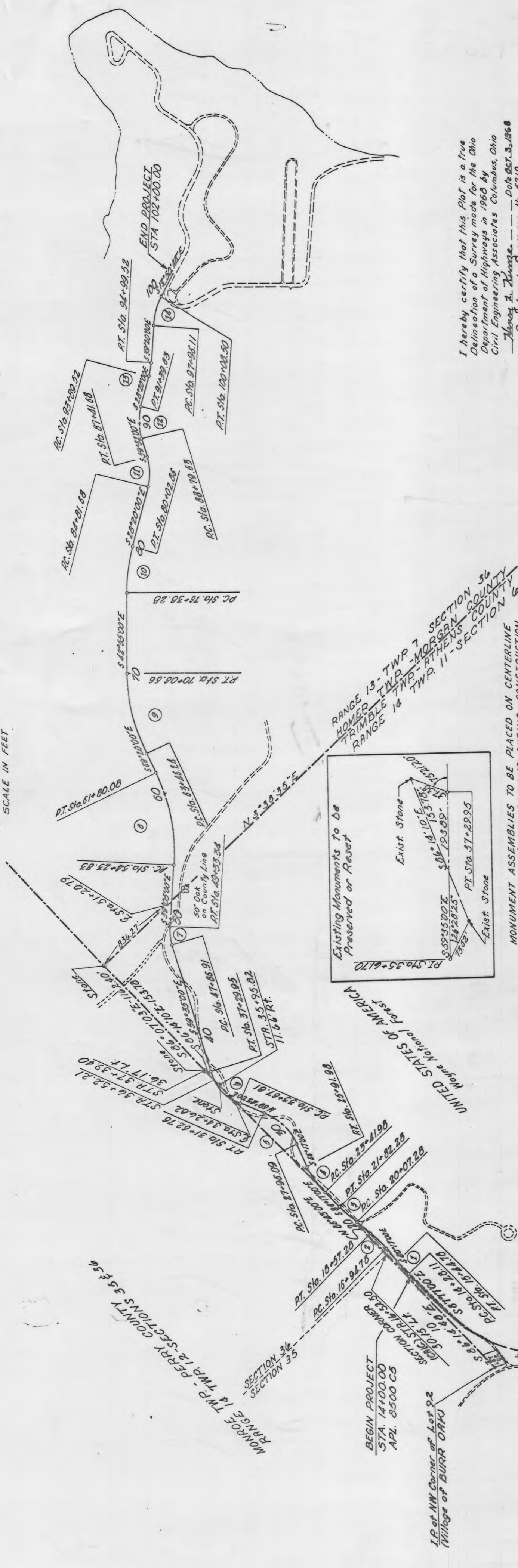
PROJECT
 OHIO APL-6500(5)
 ATHENS COUNTY
 ATH. C.R. 107
 BURR OAK ACCESS RD.

Received	19
Recorded	19
Book	Page
Athens County Recorder	
Received N.O.V. of	1945
Recorded N.O.V. of	1945
Book	Page
Moran County Recorder	
Received N.O.V. of	1945
Recorded N.O.V. of	1945
Book	Page
Perry County Recorder	
Received	1945
Recorded	1945
Book	Page

CENTERLINE SURVEY PLAT
 COUNTY ROAD 107
 ATHENS COUNTY
 TRIMBLE TOWNSHIP
 COUNTY ROAD 63
 MORGAN COUNTY
 HOMER TOWNSHIP
 PERRY COUNTY
 MONROE TOWNSHIP

38874

SCALE IN FEET
 0 100 200 400



MONUMENT ASSEMBLIES TO BE PLACED ON CENTERLINE AT THE FOLLOWING LOCATIONS DURING CONSTRUCTION

PC STA. 14128.11	PT STA. 27+96.09	PT STA. 61+00.08	PT STA. 91+39.63
PC STA. 15+44.78	PC STA. 31+62.76	PC STA. 63+46.24	PT STA. 93+89.92
PC STA. 16+94.78	PC STA. 33+67.81	PC STA. 70+06.98	PT STA. 94+99.92
PC STA. 18+57.28	PC STA. 37+23.95	PC STA. 80+02.86	PC STA. 97+96.11
PC STA. 20+07.28	PC STA. 41+00.00	PC STA. 84+81.68	PC STA. 100+08.50
PC STA. 21+82.28	PC STA. 47+06.34	PC STA. 87+41.68	
PC STA. 23+41.98	PC STA. 51+23.83	PC STA. 89+28.63	
PC STA. 25+91.98			

COORDINATES

CURVE	PC-N	PT-N	PC-E	PT-E
CURVE 1	2,123,064.14	2,123,467.39	567,349.65	569,498.97
CURVE 2	2,123,061.37	2,122,930.43	566,408.19	568,562.29
CURVE 3	2,123,057.51	2,122,272.38	566,463.75	568,608.95
CURVE 4	2,122,046.67	2,121,632.25	567,613.60	567,643.02
CURVE 5	2,123,012.42	2,122,796.01	566,694.03	567,664.63
CURVE 6	2,123,017.10	2,122,662.08	566,715.50	567,665.58
CURVE 7	2,123,025.60	2,121,933.97	566,925.25	568,337.91
CURVE 8	2,123,030.71	2,121,877.79	567,030.71	568,419.78
CURVE 9	2,123,035.02	2,121,831.58	567,102.78	568,491.02
CURVE 10	2,123,038.02	2,121,823.43	567,162.04	568,506.99

COORDINATES

CURVE	PC-N	PT-N	PC-E	PT-E
CURVE 11	2,119,871.61	2,119,871.61	572,934.57	572,934.57
CURVE 12	2,119,734.67	2,119,734.67	572,934.57	572,934.57
CURVE 13	2,119,683.24	2,119,683.24	572,934.57	572,934.57
CURVE 14	2,119,683.24	2,119,683.24	572,934.57	572,934.57

COORDINATES

CURVE	PC-N	PT-N	PC-E	PT-E
CURVE 1	2,123,064.14	2,123,467.39	567,349.65	569,498.97
CURVE 2	2,123,061.37	2,122,930.43	566,408.19	568,562.29
CURVE 3	2,123,057.51	2,122,272.38	566,463.75	568,608.95
CURVE 4	2,122,046.67	2,121,632.25	567,613.60	567,643.02
CURVE 5	2,123,012.42	2,122,796.01	566,694.03	567,664.63
CURVE 6	2,123,017.10	2,122,662.08	566,715.50	567,665.58
CURVE 7	2,123,025.60	2,121,933.97	566,925.25	568,337.91
CURVE 8	2,123,030.71	2,121,877.79	567,030.71	568,419.78
CURVE 9	2,123,035.02	2,121,831.58	567,102.78	568,491.02
CURVE 10	2,123,038.02	2,121,823.43	567,162.04	568,506.99
CURVE 11	2,119,871.61	2,119,871.61	572,934.57	572,934.57
CURVE 12	2,119,734.67	2,119,734.67	572,934.57	572,934.57
CURVE 13	2,119,683.24	2,119,683.24	572,934.57	572,934.57
CURVE 14	2,119,683.24	2,119,683.24	572,934.57	572,934.57

COORDINATES

CURVE	PC-N	PT-N	PC-E	PT-E
CURVE 1	2,123,064.14	2,123,467.39	567,349.65	569,498.97
CURVE 2	2,123,061.37	2,122,930.43	566,408.19	568,562.29
CURVE 3	2,123,057.51	2,122,272.38	566,463.75	568,608.95
CURVE 4	2,122,046.67	2,121,632.25	567,613.60	567,643.02
CURVE 5	2,123,012.42	2,122,796.01	566,694.03	567,664.63
CURVE 6	2,123,017.10	2,122,662.08	566,715.50	567,665.58
CURVE 7	2,123,025.60	2,121,933.97	566,925.25	568,337.91
CURVE 8	2,123,030.71	2,121,877.79	567,030.71	568,419.78
CURVE 9	2,123,035.02	2,121,831.58	567,102.78	568,491.02
CURVE 10	2,123,038.02	2,121,823.43	567,162.04	568,506.99

I hereby certify that this Plat is a true Delineation of a Survey made for the Ohio Department of Highways in 1968 by Civil Engineering Associates Columbus, Ohio
 Thomas J. Zwarg
 Registered Surveyor No. 5219

Signed John H. Dowler
 Date Division Deputy Director

222-B
 4-164

4-164

4-164

DWN. SPS