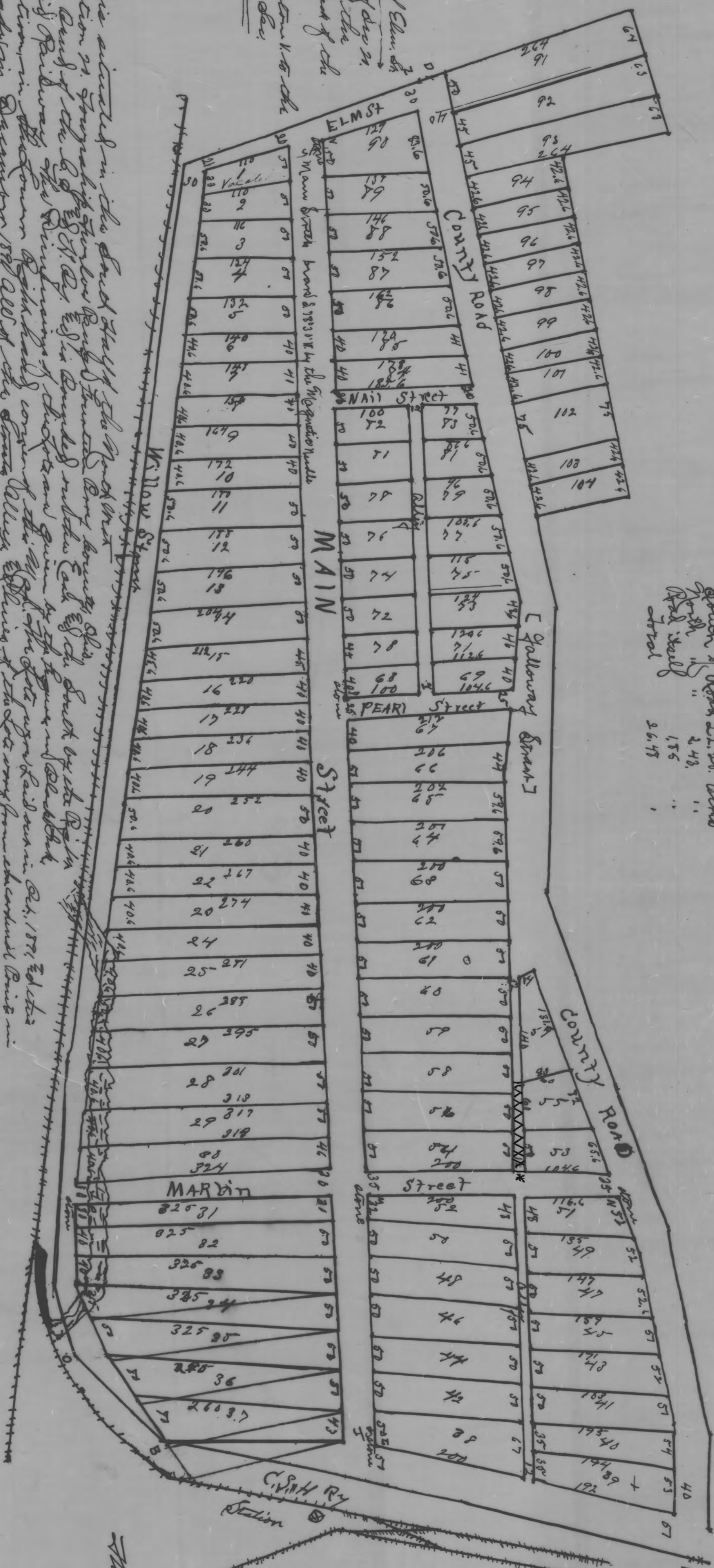


Monetary counsel of the State  
 from Perry County 1853 to 1864  
 from Perry County 1865 to 1870  
 from Perry County 1871 to 1880  
 from Perry County 1881 to 1890  
 from Perry County 1891 to 1900  
 from Perry County 1901 to 1910  
 from Perry County 1911 to 1920  
 from Perry County 1921 to 1930  
 from Perry County 1931 to 1940  
 from Perry County 1941 to 1950  
 from Perry County 1951 to 1960  
 from Perry County 1961 to 1970  
 from Perry County 1971 to 1980  
 from Perry County 1981 to 1990  
 from Perry County 1991 to 2000  
 from Perry County 2001 to 2010  
 from Perry County 2011 to 2020  
 from Perry County 2021 to 2030  
 from Perry County 2031 to 2040  
 from Perry County 2041 to 2050  
 from Perry County 2051 to 2060  
 from Perry County 2061 to 2070  
 from Perry County 2071 to 2080  
 from Perry County 2081 to 2090  
 from Perry County 2091 to 2100

# DRAKES

NOTE  
 \*SEE COM JOURNAL VOL. 39  
 PG. 544 FOR ALLEY VAC.



This plat is situated in the South West of the Perry County, Kentucky, and is bounded by the County Road on the north and south, and Main Street on the east and west. The plat is divided into lots, and the numbers of the lots are as follows: 1, 2, 3, 4, 5, 6, 7, 8, 9, 10, 11, 12, 13, 14, 15, 16, 17, 18, 19, 20, 21, 22, 23, 24, 25, 26, 27, 28, 29, 30, 31, 32, 33, 34, 35, 36, 37, 38, 39, 40, 41, 42, 43, 44, 45, 46, 47, 48, 49, 50, 51, 52, 53, 54, 55, 56, 57, 58, 59, 60, 61, 62, 63, 64, 65, 66, 67, 68, 69, 70, 71, 72, 73, 74, 75, 76, 77, 78, 79, 80, 81, 82, 83, 84, 85, 86, 87, 88, 89, 90, 91, 92, 93, 94, 95, 96, 97, 98, 99, 100.

Attest: A reproduction of Plat Book No. 3  
 Nancy C. Howdyshell  
 Perry County Recorder

EXPLANATION  
 The plat is situated in the South West of the Perry County, Kentucky, and is bounded by the County Road on the north and south, and Main Street on the east and west. The plat is divided into lots, and the numbers of the lots are as follows: 1, 2, 3, 4, 5, 6, 7, 8, 9, 10, 11, 12, 13, 14, 15, 16, 17, 18, 19, 20, 21, 22, 23, 24, 25, 26, 27, 28, 29, 30, 31, 32, 33, 34, 35, 36, 37, 38, 39, 40, 41, 42, 43, 44, 45, 46, 47, 48, 49, 50, 51, 52, 53, 54, 55, 56, 57, 58, 59, 60, 61, 62, 63, 64, 65, 66, 67, 68, 69, 70, 71, 72, 73, 74, 75, 76, 77, 78, 79, 80, 81, 82, 83, 84, 85, 86, 87, 88, 89, 90, 91, 92, 93, 94, 95, 96, 97, 98, 99, 100.

The plat is situated in the South West of the Perry County, Kentucky, and is bounded by the County Road on the north and south, and Main Street on the east and west. The plat is divided into lots, and the numbers of the lots are as follows: 1, 2, 3, 4, 5, 6, 7, 8, 9, 10, 11, 12, 13, 14, 15, 16, 17, 18, 19, 20, 21, 22, 23, 24, 25, 26, 27, 28, 29, 30, 31, 32, 33, 34, 35, 36, 37, 38, 39, 40, 41, 42, 43, 44, 45, 46, 47, 48, 49, 50, 51, 52, 53, 54, 55, 56, 57, 58, 59, 60, 61, 62, 63, 64, 65, 66, 67, 68, 69, 70, 71, 72, 73, 74, 75, 76, 77, 78, 79, 80, 81, 82, 83, 84, 85, 86, 87, 88, 89, 90, 91, 92, 93, 94, 95, 96, 97, 98, 99, 100.

This Plat was reproduced thru the joint cooperation of T. Chris Wilson, Perry County Engineer and Nancy C. Howdyshell, Perry County Recorder

ATTEST: A reproduction of Plat Book No. 3  
 Nancy C. Howdyshell  
 Perry County Recorder