

CROOKSVILLE

Enlargement of Corporate Limits.

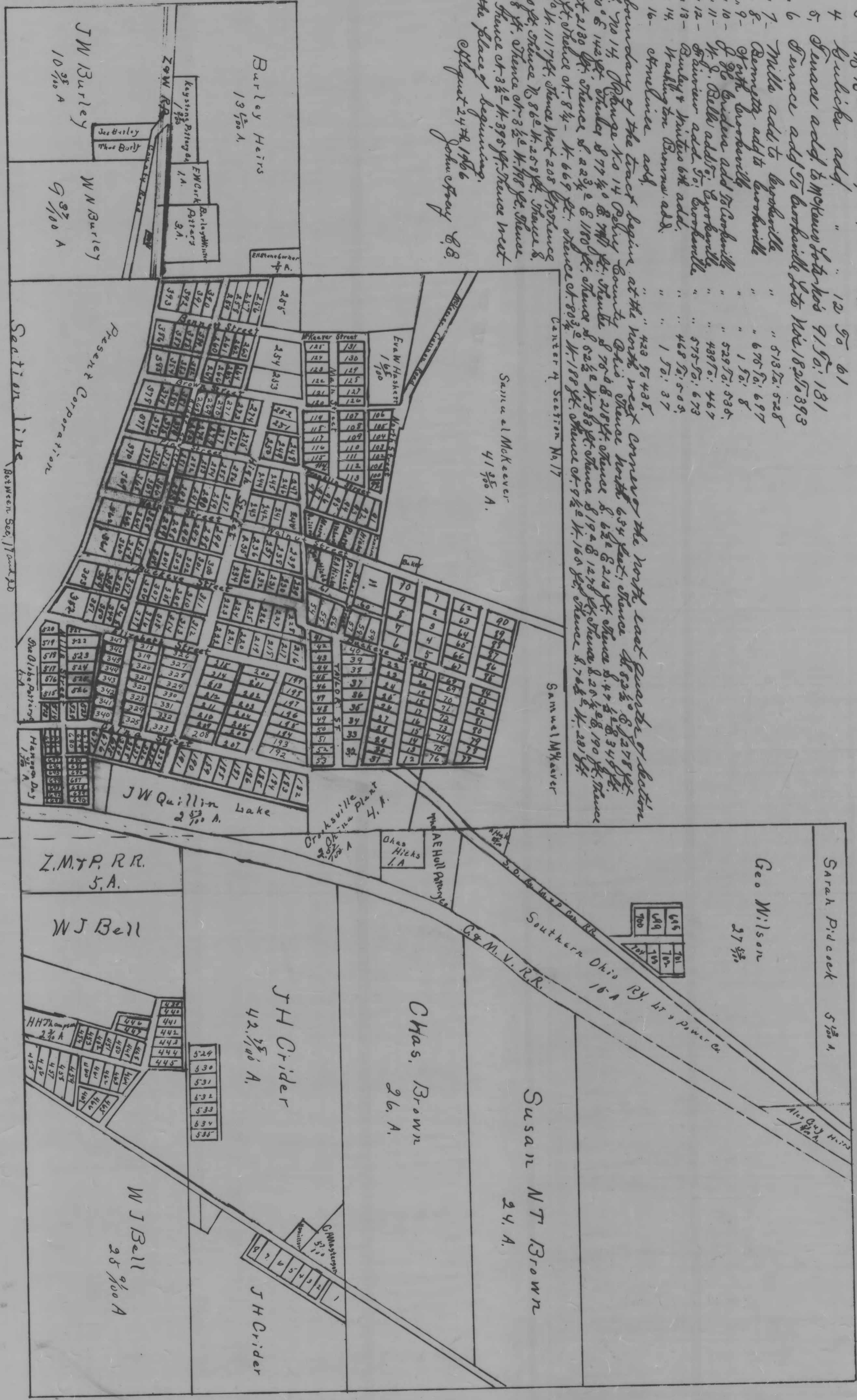
The numbers in red ink indicate different additions.

- 1-1 Mrs. Wilson add. lots Nos 90, 91, 92
- 2-1 Mrs. Turner " " 1 90; 11
- 3-1 Mrs. Turner add " " 62 90; 90
- 4-1 Kulisika add " " 12 90; 61
- 5-1 Sumner add. to McKenna lot No 91, 90, 181
- 6-1 Sumner add. to barabailly lot No 182, 183, 184
- 7-1 Mills add. to barabailly " " 513 90; 528
- 8-1 Rempply add. to barabailly " " 675 90; 697
- 9-1 J. G. Bickler add. to barabailly " " 1 90; 8
- 10-1 J. G. Bickler add. to barabailly " " 529 90; 535
- 11-1 J. G. Bickler add. to barabailly " " 438 90; 447
- 12-1 Fairview add. to barabailly " " 575 90; 673
- 13-1 Bunting & Winton 6th add. " " 468 90; 505
- 14-1 Bunting & Winton add. " " 1 90; 37
- 15-1 Bunting & Winton add. " " 423 90; 425

The north boundary of the tract begins at the north west corner the north east quarter of Section 20, T. 20 S., R. 14 W., Perry County, Ohio. Thence with 634 feet; thence S. 82° E. 1278 feet; thence S. 14° E. 142 feet; thence S. 77° 40' E. 941 feet; thence S. 75° 0' E. 2184 feet; thence S. 63° E. 213 feet; thence S. 49° E. 344 feet; thence S. 21° E. 2130 feet; thence S. 23° E. 1180 feet; thence S. 62° E. 388 feet; thence S. 19° E. 1278 feet; thence S. 20° E. 190 feet; thence S. 78° E. 281 feet; thence S. 26° 55' E. 84 feet; thence S. 66° 9' E. 669 feet; thence S. 83° E. 208 feet; thence S. 83° E. 1117 feet; thence West 208 feet; thence S. 87° E. 160 feet; thence N. 86° W. 259 feet; thence S. 87° E. 198 feet; thence S. 87° E. 178 feet; thence West 243 feet; thence S. 82° E. 395 feet; thence West 229 feet to the place of beginning.

Witness my hand and seal this 24th day of August, 1906.

John Gray, C. C.



ATTEST: A Reproduction of Plat Book No. _____

June, 1981

This Plat was reproduced thru the joint cooperation of T. Chris Wilson, Perry County Engineer and Nancy C. Howdyshell, Perry County Recorder

Nancy C. Howdyshell
Nancy C. Howdyshell
Perry County Recorder