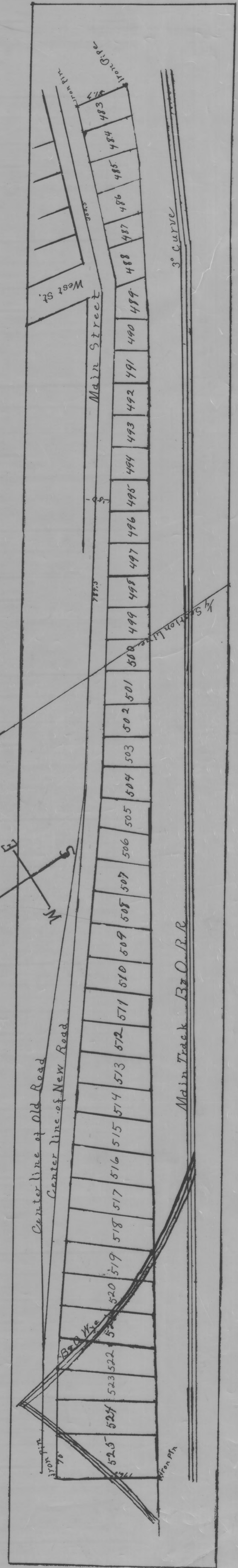


D.C. JENKINS' First addition to SHAWNEE



Scale - 1-inch = 25-feet

For description of land in this Plat
 See deed from "New York Coal Co." to
 D.C. Jenkins. Vol. 72, Page 317.
 Record of Deeds, of Perry County.

This Plat was reproduced thru the
 joint cooperation of T. Chris
 Wilson, Perry County Engineer and
 Nancy C. Howdysshell, Perry County
 Recorder

ATTEST: A Reproduction of Plat Book No. 3
 June, 1981

Nancy C. Howdysshell
 Nancy C. Howdysshell
 Perry County Recorder

*Received for record
 Jan 8th, 1906, at 5:10 A.M.
 Recorded Jan 8th 1906*