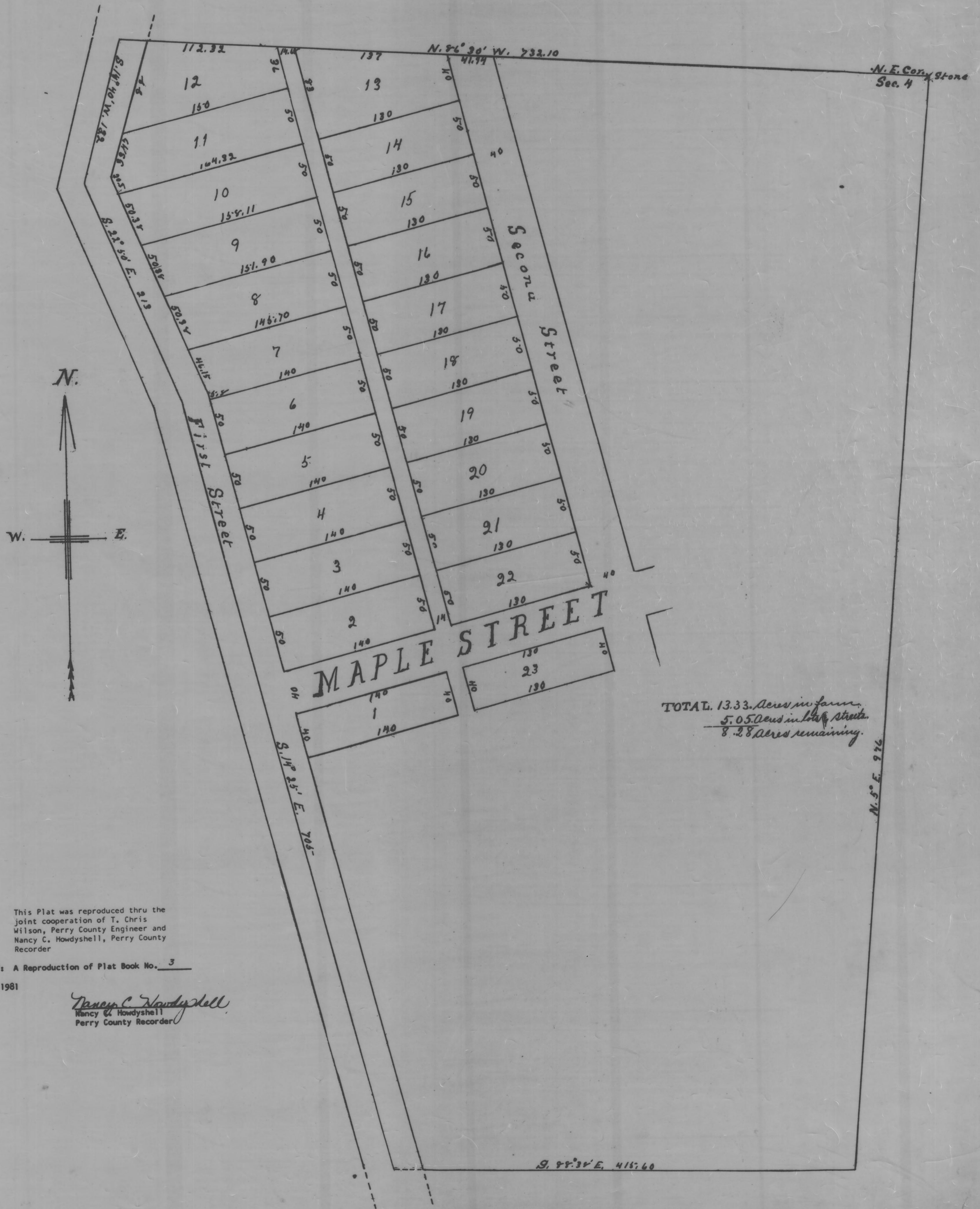


MELICK'S Addition to ROSEVILLE, O.



This Plat was reproduced thru the joint cooperation of T. Chris Wilson, Perry County Engineer and Nancy C. Howdysshell, Perry County Recorder

ATTEST: A Reproduction of Plat Book No. 3
June, 1981

Nancy C. Howdysshell
Nancy C. Howdysshell
Perry County Recorder

S. 88° 30' E. 415.60