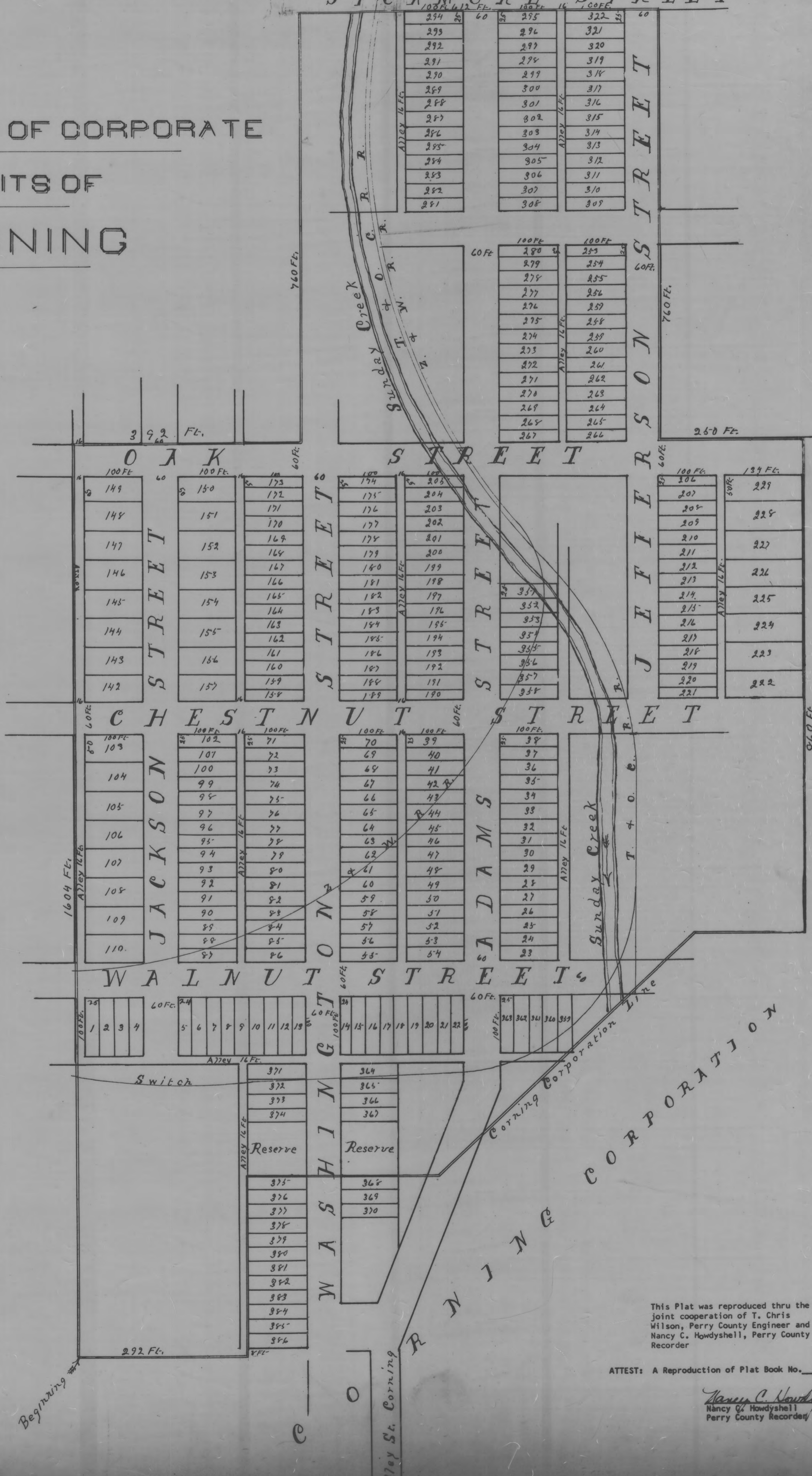


SYCAMORE STREET

EXTENSION OF CORPORATE
LIMITS OF
CORNING



This Plat was reproduced thru the joint cooperation of T. Chris Wilson, Perry County Engineer and Nancy C. Howdyshell, Perry County Recorder

ATTEST: A Reproduction of Plat Book No. 3

Nancy C. Howdyshell
Nancy C. Howdyshell
Perry County Recorder