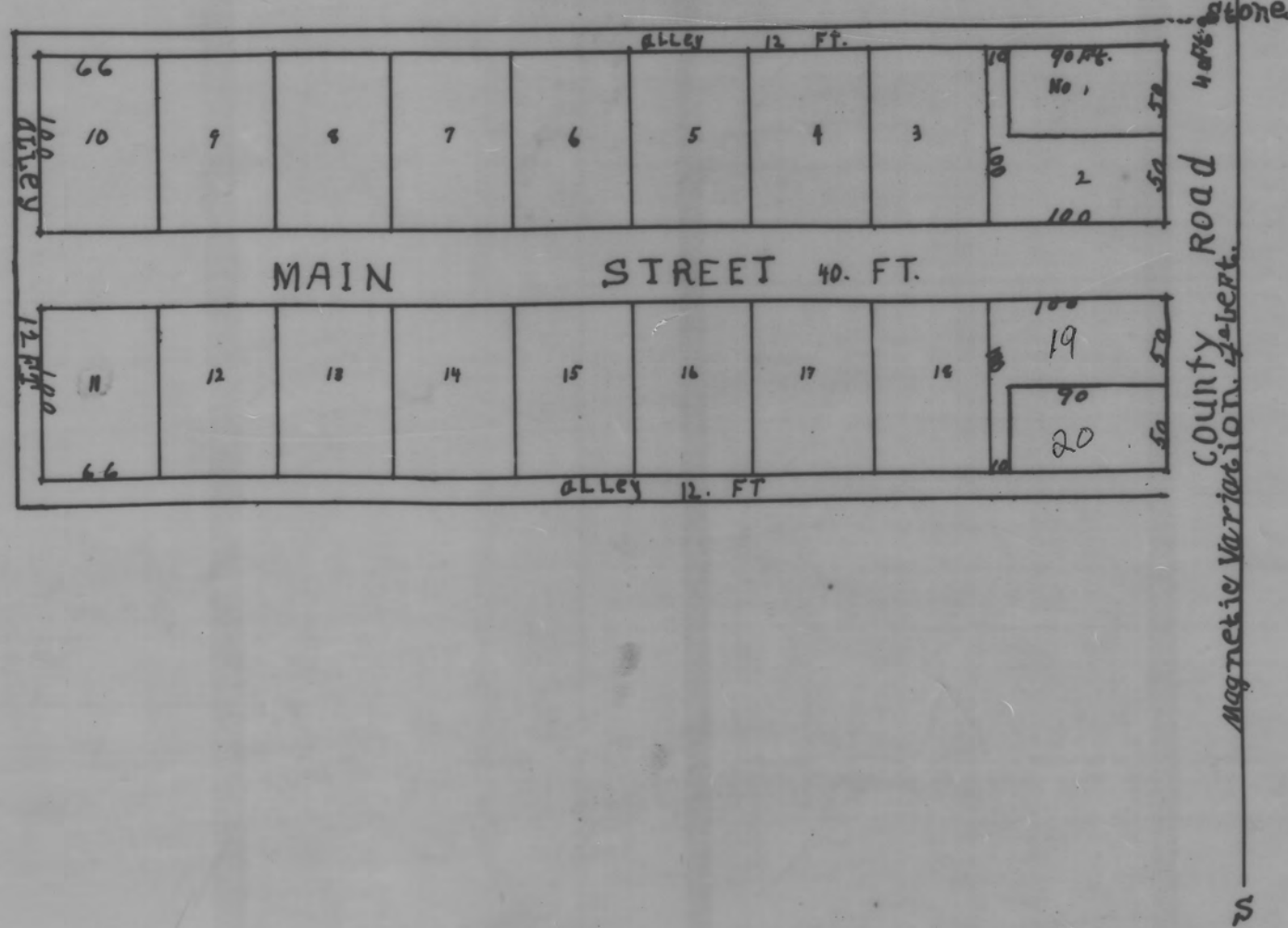


THE VILLAGE OF SOUTH GROOKSVILLE.



The Village of South Grooksville is situated in the North West quarter of Section 28, Township 14, Range 14, and Commencing at a stone at the North East corner of said quarter, thence West 20 ft. to the place of beginning, thence West 640 feet, thence South 264 feet, thence East 640 feet, thence North 264 feet to the place of beginning containing 3.900 Acres. Lots No. 1 + 20 contain .10 of an acre. Lots 2 + 19 contain .12 of an acre. Lots No. 3, 4, 5, 6, 7, 8, 9, 10, 11, 12, 13, 14, 15, 16, 17, + 18 each contain .13 of an acre and are 66 x 100 feet. Lots 1, 2, 19 + 20 are marked in plat.

John D. Minnaugh,
Surveyor

The State of Ohio, Perry County,

Do it Remembered, That on this 4th day of November 1902, Personally appeared W. H. Durr and Emma Durr his wife, who acknowledged the signing of the above plat to be their voluntary act and deed, and We hereby dedicate the Streets and Alleys on the above plat to public use forever.

In the Presence of
S. Ray Watts
E. S. Taylor

W. H. Durr
Emma Durr

In Testimony Whereof I have hereunto subscribed my name and affixed my official seal on the day and year last aforesaid.

E. S. Taylor
Notary Public.

Transferred Nov 6th 1902.
S. W. Pascoe
Auditor

Received November 6th 1902.
at 9¹⁵ O'clock A. M.

Recorded November 29th 1902.
J. B. Evans
Recorder.

This Plat was reproduced thru the joint cooperation of T. Chris Wilson, Perry County Engineer and Nancy C. Howdysshell, Perry County Recorder

ATTEST: A Reproduction of Plat Book No. 3

June, 1981

Nancy C. Howdysshell
Nancy C. Howdysshell
Perry County Recorder