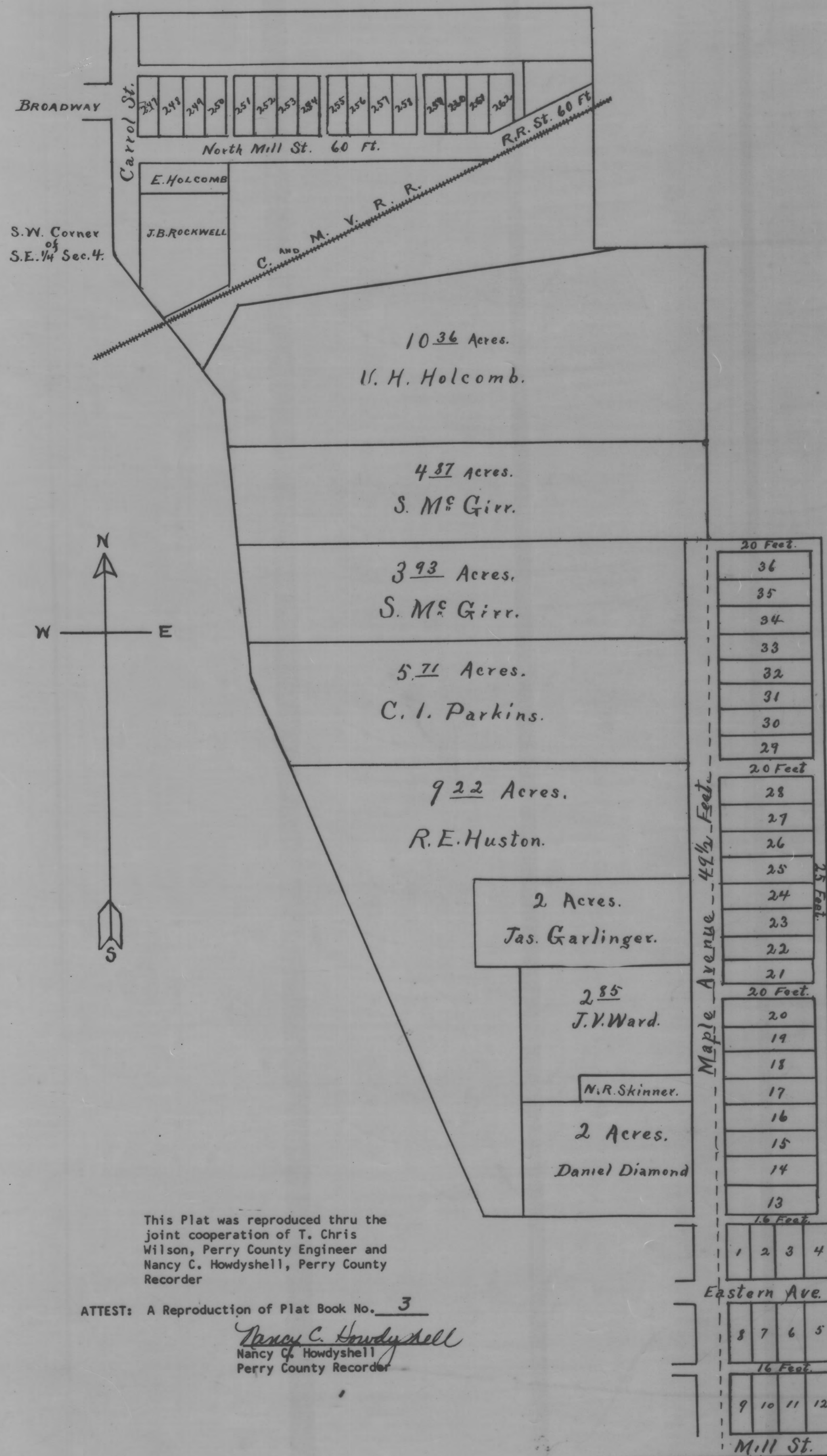


ANNEXATION OF JANE BUTLER'S FIRST AND SECOND, AND CARROLL'S ADDITIONS TO NEW LEXINGTON.



This Plat was reproduced thru the joint cooperation of T. Chris Wilson, Perry County Engineer and Nancy C. Howdysshell, Perry County Recorder

ATTEST: A Reproduction of Plat Book No. 3

Nancy C. Howdysshell
Nancy C. Howdysshell
Perry County Recorder