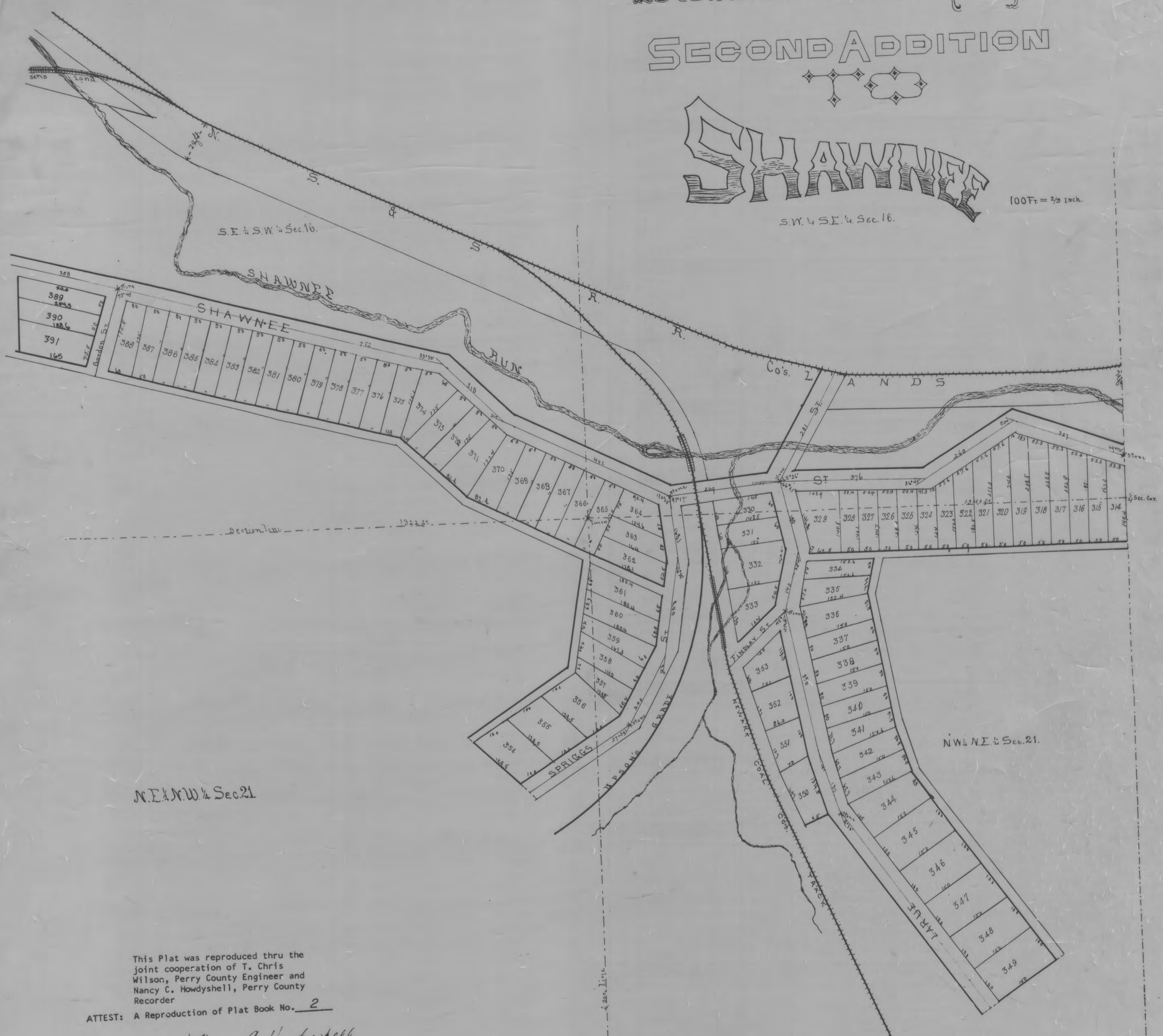


Newark Coal Company's SECOND ADDITION

SHAWNEE

100 Ft = 2/3 inch.



This Plat was reproduced thru the joint cooperation of T. Chris Wilson, Perry County Engineer and Nancy C. Howdysshell, Perry County Recorder

ATTEST: A Reproduction of Plat Book No. 2

Nancy C. Howdysshell
Nancy C. Howdysshell
Perry County Recorder

This Newark Coal Company's second Addition to the town of Shawnee, in the County of Perry, state of Ohio, is situated in the S.E. quarter of the S.W. quarter and the S.W. quarter of the S.E. quarter of Section sixteen, and in the S.E. quarter of the N.W. quarter and the S.W. quarter of the S.E. quarter of Section twenty one (21) Township Fountain (14) Range Tiffin (15) of the lands subject to sale at Xenia, Ohio, and in the Township of Salt Creek in said Perry County Ohio, and is bounded as follows, commencing at the S.E. corner of the S.W. quarter of the S.E. quarter of Section fifteen (15) thence N. 76° 15' W. 117 feet thence S. 79° 30' W. 309 feet thence S. 79° 30' W. 264 feet thence S. 88° 45' W. 324 feet thence S. 95° 45' E. 252 feet to center of track of main line of Newark Democrat & Straitville Railroad thence westerly with center of said track 52 1/2 feet thence S. 80° 45' W. 259 feet thence S. 71° 15' W. 248 feet thence S. 63° 45' W. 384 1/2 feet thence S. 42° 45' W. 221 feet thence S. 76° 15' W. 104 1/2 feet thence due south 250 feet thence S. 76° 15' W. 91 1/2 feet thence S. 74° 45' E. 144 feet thence S. 42° 45' E. 194 feet thence S. 63° 45' E. 322 feet thence S. 95° 45' W. 272 feet thence S. 57° 15' W. 300 feet thence S. 19° 15' E. 195 feet thence S. 57° 15' E. 300 feet thence S. 29° 45' E. 210 feet thence S. 90° 45' E. 205 feet thence S. 64° 45' W. 148 feet thence S. 87° 30' E. 77 feet S. 45° W. 40 feet thence S. 18° 30' E. 272 feet thence S. 23° 15' E. 149 feet thence S. 64° 15' E. 65 feet thence S. 35° 15' E. 606 feet thence S. 45° W. 40 feet thence S. 25° 45' W. 100 feet thence S. 15° 45' W. 302 feet thence S. 44° 45' E. 86 feet thence due east 64 1/2 feet then beginning, containing as follows, to wit, in the S.E. quarter of the S.W. quarter of Section 16 - 7.80 acres more

"	"	S.E.	"	"	"	"	"	4.00	"
"	"	S.E.	"	"	S.W.	"	"	21	1.73
"	"	S.W.	"	"	S.E.	"	"	1460	"