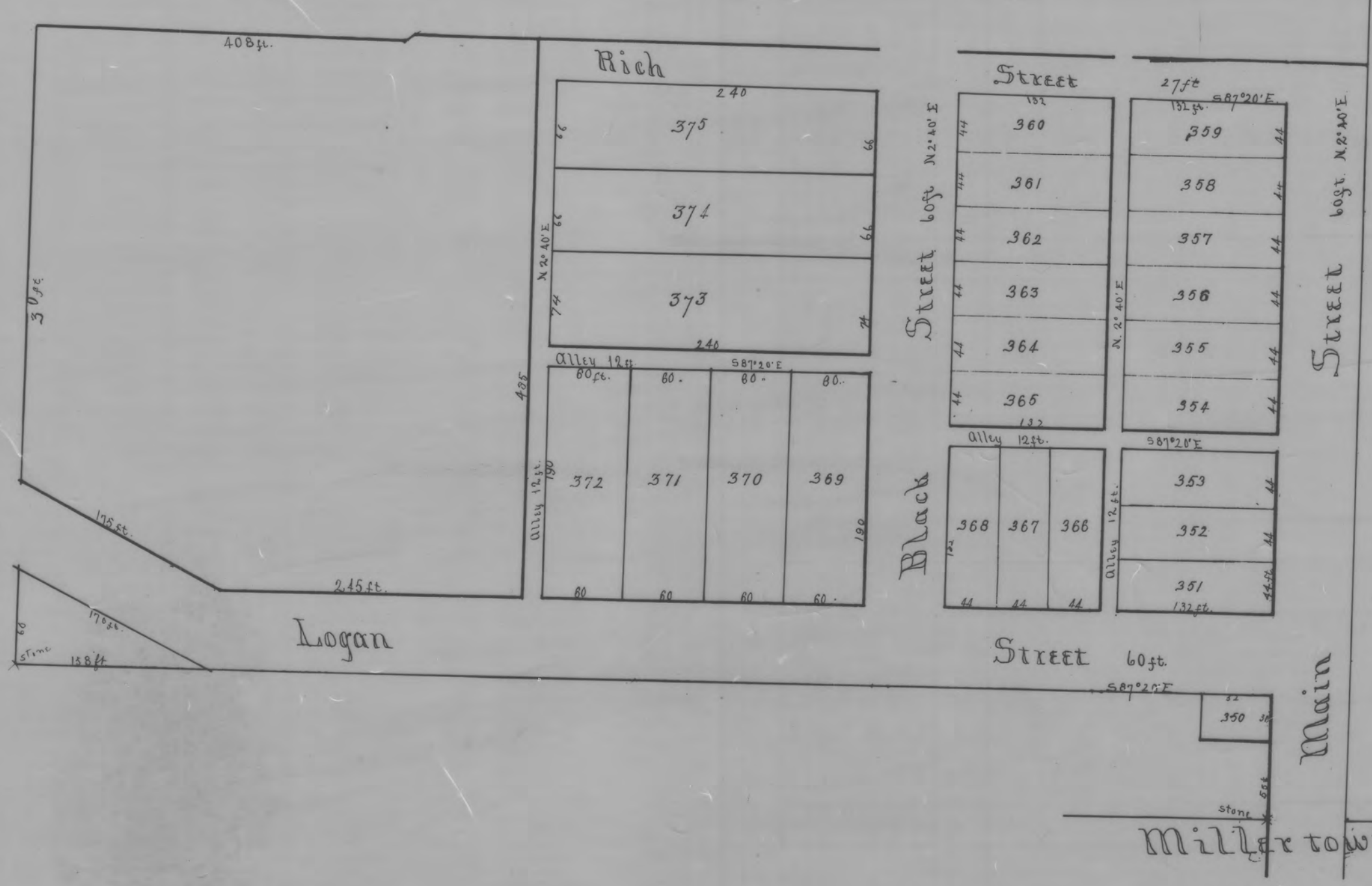
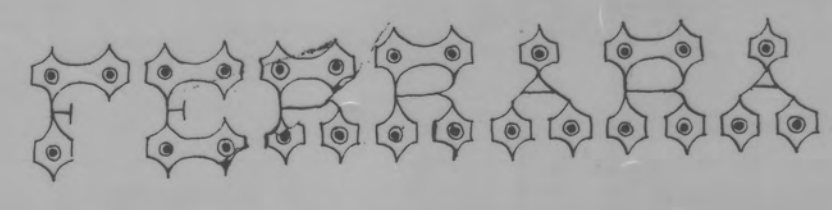


# FIRST ADDITION TO



Know all men by these presents: The Atlantic and Lake Erie Coal Company, duly incorporated under the laws of Ohio - hereby executed the annexed plat of the first addition to Ferrara in Perry County Ohio, and hereby dedicated to public use the streets and alleys marked and described on said plat, and in the annexed description thereof given by Geo. S. Lester, Surveyor. In testimony whereof the said incorporated company has caused its corporate seal to be hereto affixed, and then presents to be signed by its President and Secretary this 5<sup>th</sup> day of August A.D. 1873.

Charles Foster, Pres.  
of Atlantic and Lake Erie Coal Co.  
W. V. McCracken, Secy.  
of Atlantic and Lake Erie Coal Co.

### Description of Plat

The first addition to Ferrara is situated in the south west corner of the S.E. quarter of Section 16, Township 4 N., Range 10 E., Ohio. The width and bearings of streets and alleys, and the dimensions of lots are given in the plat. Main Street is an extension of Main Street in Miller town. Stones are planted at the intersection of the center lines of Main<sup>th</sup> Logan, Main<sup>th</sup> Rich and Logan and Black Streets.

I certify that the above description is correct Geo. S. Lester, Surveyor.

On this 5<sup>th</sup> day of August 1873, appeared before the undersigned a Notary Public within and for the County of Crawford in the state of Ohio, Charles Foster, President, and W. V. McCracken, Secretary of the Atlantic and Lake Erie Coal Company, and on behalf said company acknowledged the execution of the foregoing instrument to be its voluntary act and deed. W. C. Laurent, Notary.

Received August 10<sup>th</sup> 1873  
Recorded August 15<sup>th</sup> 1873

Wm. G. Bucknor Recorder P.C.O.

This Plat was reproduced thru the joint cooperation of T. Chris Wilson, Perry County Engineer and Nancy C. Howdysshell, Perry County Recorder

ATTEST: A Reproduction of Plat Book No. 2  
Nancy C. Howdysshell  
Nancy C. Howdysshell  
Perry County Recorder