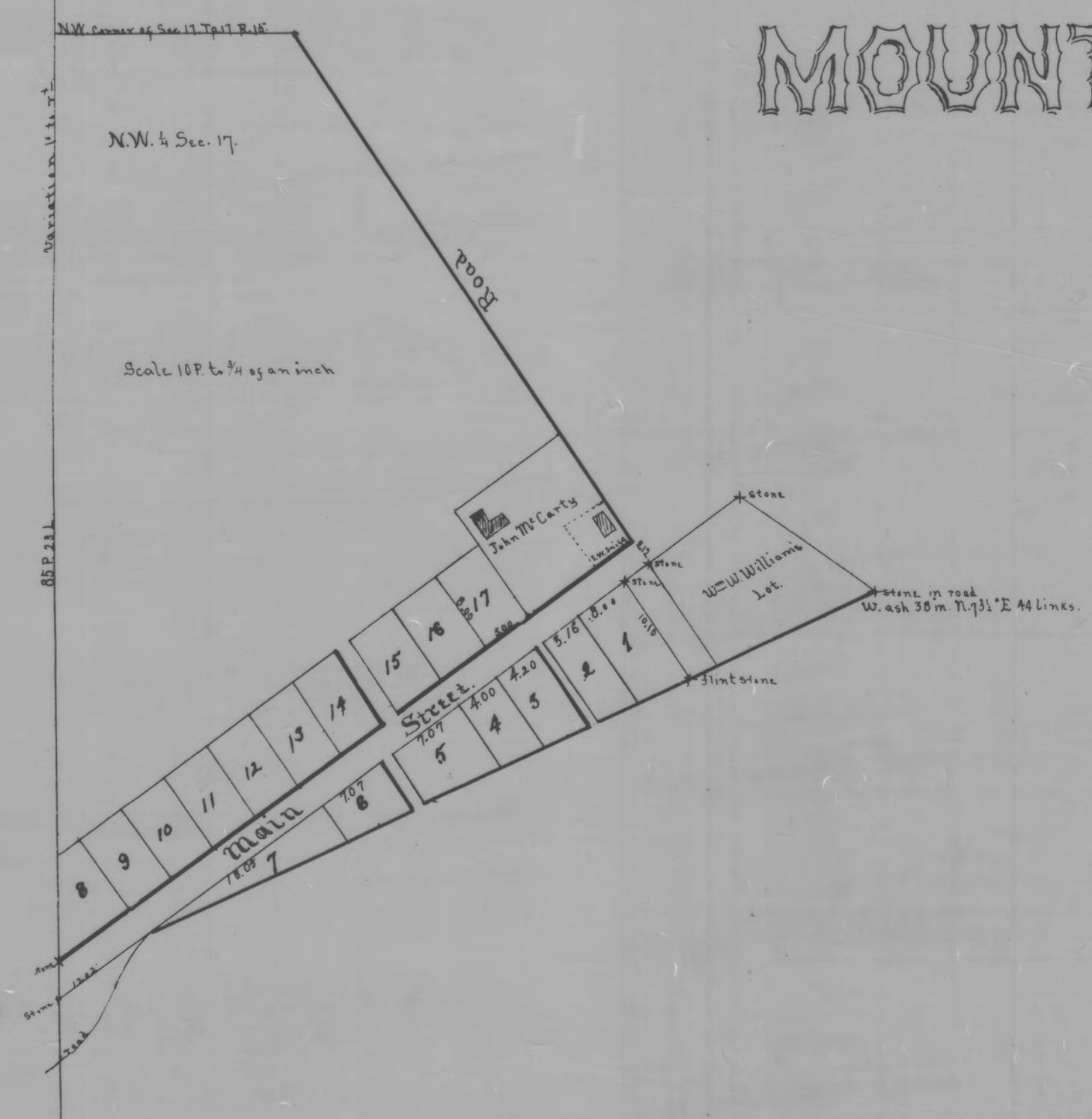




MOUNT PERRY.



Description of lots in Mount Perry
 No. 1 & 2 John Dayson
 " 3 James White
 " 4 Benjamin Spicer
 " 5 Edward Burgess
 " 6 & 7 Jeremiah Burgess
 Two alleys one 8 ft. + one 10 feet wide
 The above lots on Main St. cross at 540 ft
 thence at 35 1/2° E. Thence at 63° E Thence at 35° W.

Survey of lots in Mount Perry, being part of N 7 of Sec. 17 S. 17 R. 15 Madison Township, Perry County Ohio, for John McCarty, John Hamilton Jeremiah Burgess, James White, Benjamin Spicer & Edward Burgess.

John McCarty's Addition to Mount Perry commencing at a stone at a Leash 14 in. S. 10° W. 5 links. Thence S 56° W. 74 Rods + 10 links to a stone S.W. corner of John McCarty's lot. The additional lots 9, 10, 11, 12, 13, 14, 15, 16 and 17 are each 5 rods wide, and 8 rods long and contain one fourth of an acre each. One alley between 14 & 15 one rod wide & depth of lots. Except lot No. 8 commencing at S.W. corner of lot No. 9, thence S 54° W. 8 rods to a stone on section line. Thence north 1 rod to a stone. Thence at 54° E 2 rods & 22 links to a stone, Thence S 22° E 8 rods to beginning corner, containing 43 1/2 rods of land.

*Robert Wallace
 A. M. McCarty
 Edward Burgess* } *Chairmen*

Thos. D. Spauld

*Received Dec 28th 1864
 Recorded January 2nd 1865
 Wm G. Buckner, Recorder.*

This Plat was reproduced thru the joint cooperation of T. Chris Wilson, Perry County Engineer and Nancy C. Howdysshell, Perry County Recorder

ATTEST: A Reproduction of Plat Book No. 2

Nancy C. Howdysshell
 Nancy C. Howdysshell
 Perry County Recorder