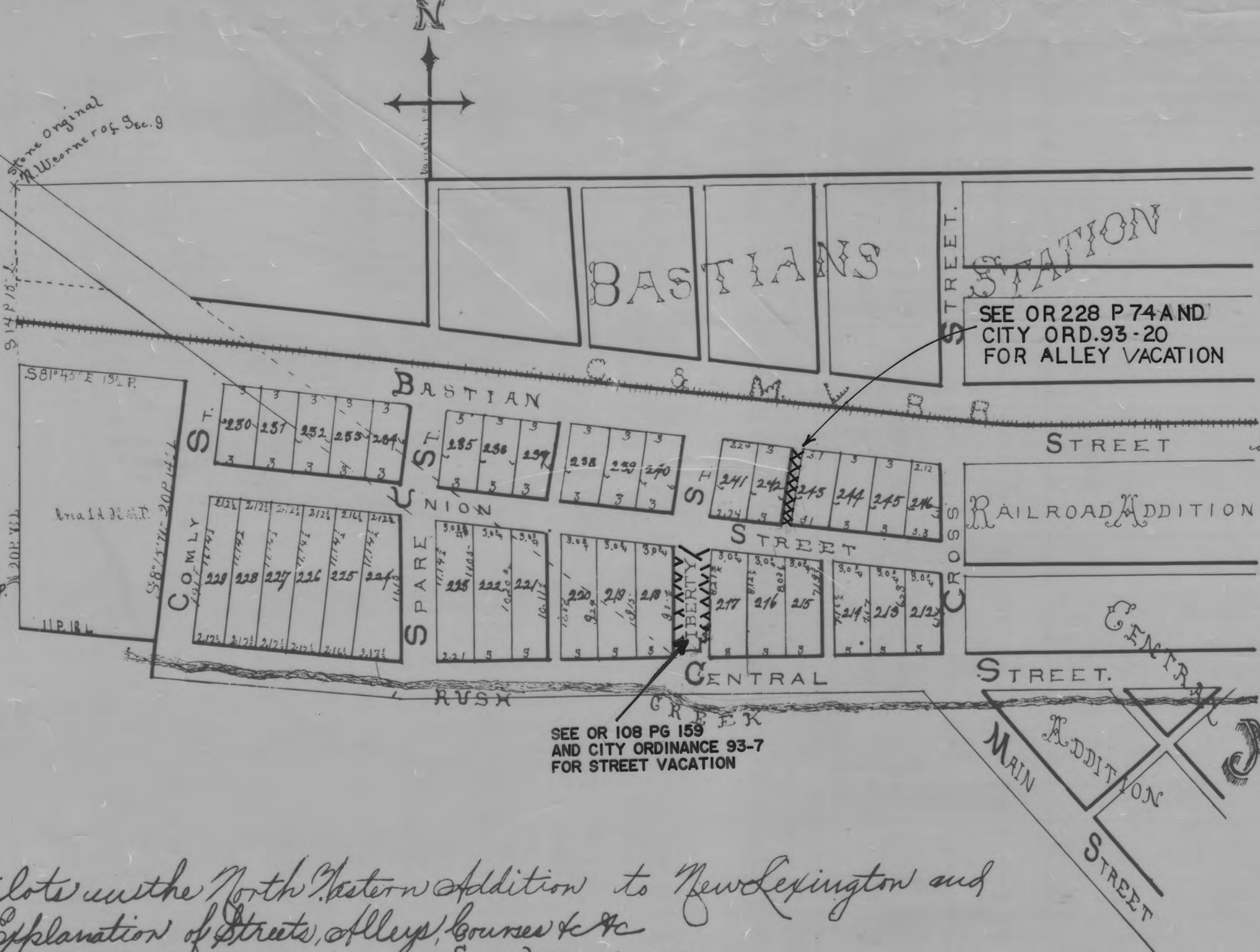


Note
The dotted line along the former road shows the line between Bastian & Comly
Total contents including streets, alley lots and out lots 53.78 P
Comly part being 28.75.65 P and Bastian being 25.03.13 P.



NORTH WESTERN
ADDITION
TO
New Lexington

Contents of Lots

No.	P. Measure
212	20.22
213	21.30
214	22.59
215	23.85
216	24.93
217	26.01
218	28.24
219	28.54
220	30.43
221	31.92
222	33.04
223	32.35
224	35.90
225	30.80
226	29.15
227	29.15
228	29.15
229	29.15
230	18.60
231	18.00
232	18.00
233	18.00
234	18.00
235	18.00
236	18.00
237	18.00
238	18.00
239	18.00
240	18.00
241	17.76
242	18.00
243	18.00
244	18.00
245	18.00
246	17.64

Reference to lots in the North Western Addition to New Lexington and also Explanation of Streets, Alleys, Courses &c

Explanation
Central, Union, Liberty, Spare & Comly Streets, are each 30 ft. in width. Bastian St. which is a continuation of Bastian St. in the R.R. Addition is 100 feet wide. Union St. at the east end of the plat is 20 ft. wide and is in Central Addition, Union St. runs N. 81° 45' W. Comly St. runs N. 8° 15' E. Spare and Liberty Sts. South of Union St. runs due north and north of Unions, they run N. 8° 15' E. Bastian St. at 81° 45' W. Central St. runs due west to the S.W. corner of lot No. 223 thence N. 81° 45' West. All the alleys are 10 ft. wide. The lines dividing the lots, run at right angles with Union St. except those dividing lots No. 212, 213, 214, 215, 216, 217, 218, 219, 220, 221, 222 & 223, and the east lines of lots No. 224 & 226, which run due north. The figures in black marked on the face of lots indicate the number of said lots; and the figures on the lines of lots indicate the length of said lots in perches and links. Stones are planted at each corner.

I certify that the annexed plat and table of contents and the foregoing explanations of the same, are correct. And I also certify that Levi Suster and Daniel Maloy chairmen and markers were duly sworn by me before entering upon their duties as such. Thos. D. Sparo C.S.
New Lexington, Ohio
January 15th A.D. 1859.

Laid out on the 11th, 12th & 13th days of January 1859 for Philip Bastian & David Comly Prop's.
Levi Suster } Chairmen.
Dan Maloy }

We Philip Bastian and David Comly, Proprietors of the within plat of the Northwestern Addition to New Lexington do hereby dedicate the streets and alleys indicated thereon to public use, and authorized said plat to be placed upon the records. Witness our hands and seals this 15th day of April 1859.

In the presence of
L. A. Muzzey
J. B. Colborn

P. Bastian
David Comly

The State of Ohio, Perry County

Before the undersigned, a Justice of the Peace in and for said County, personally came Philip Bastian & David Comly, Executors in the foregoing conveyance, and acknowledged that they did sign and seal the same for the purposes therein named. Witness my hand this 13th day of April 1859. J. B. Colborn J.P.

Received April 14th 1859. Recorded April 28th 1859.

Attest P. J. Hukney Recorder
By H. A. Taylor, Deputy.

This Plat was reproduced thru the joint cooperation of T. Chris Wilson, Perry County Engineer and Nancy C. Howdysheill, Perry County Recorder

ATTEST: A Reproduction of Plat Book No. 2

Nancy C. Howdysheill
Nancy C. Howdysheill
Perry County Recorder