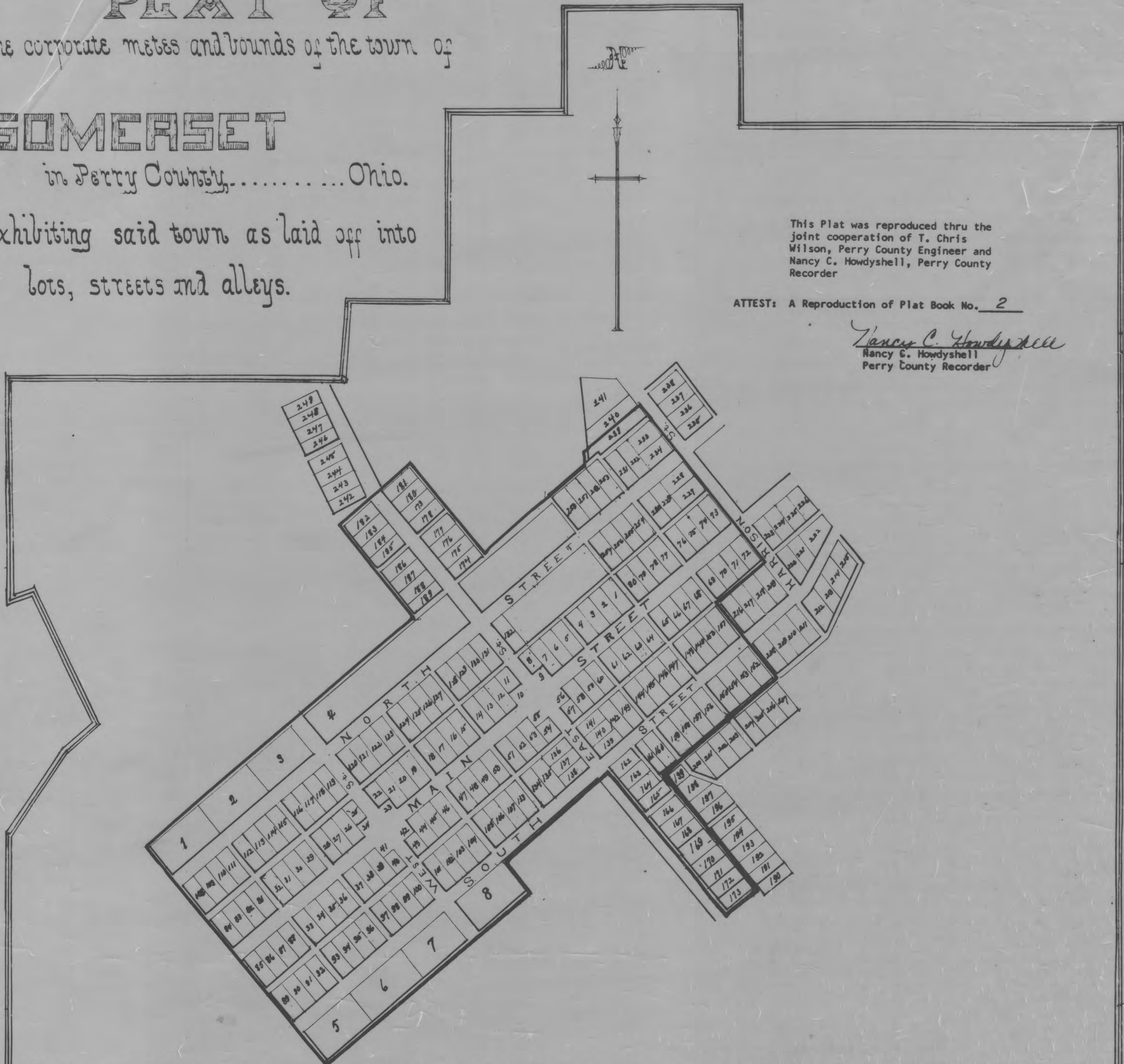


PLAT OF  
the corporate metes and bounds of the town of

SOMERSET  
in Perry County,..... Ohio.

Exhibiting said town as laid off into  
lots, streets and alleys.



This Plat was reproduced thru the  
joint cooperation of T. Chris  
Wilson, Perry County Engineer and  
Nancy C. Howdysshell, Perry County  
Recorder

ATTEST: A Reproduction of Plat Book No. 2

*Nancy C. Howdysshell*  
Nancy C. Howdysshell  
Perry County Recorder

Beginning at the S.E. corner of the west half of section No. 10, Township No. 16, Range No. 16, thence west along the section line 80 chains 50 lks to the S.W. corner of the east half of section No. 9, thence north along the half section line 42 chs. 59 lks. to a post, thence N. 35° E. 7 chs. 5 lks. to a post, thence N. 40° E. 2 chs. 77 lks. to a post; thence N. 21° W. 10 chs. 55 lks. to a post; thence S. 70° W. 1 ch. 25 lks. to a post; thence north on the line between the lands of Samuel Sumner and widow Harhol ser, 15 chs. 5 lks. to the road from Somerset to New Reading, thence E. along said road 23 chs. 4 lks. to the land of Samuel Lutz; thence N. 4° E. 4 chs. 59 lks. to a post; thence N. 1 ch. 62 lks. to a post; thence E. on the line between said Lutz and Wm. La Rue 7 chs. 4 lks. to a post; thence N. along the line between said La Rue, Samuel Gordon, Wm. D. Harper, and David Mathews 12 chs. 77 lks. to a post; thence E. 8 chs. 89 lks. to the section line between sections 9 & 4 and sections 9 & 10 thence N. 7 chs. 39 lks. to a post; thence S. through the land of Eli A. Spencer 12 chs. 5 lks. to a post; thence S. 8 chs. 80 lks. to a post; thence E. on the line between the land of said Eli A. Spencer and Charles C. Hood 27 chs. 64 lks. to the half section line at the Brownsville road; thence S. along said half section line 90 chs. to the place of beginning containing 70+ acres and 2 roads. Main street runs S. 50° W. and North and South streets run parallel with Main street. Harrison street runs from the north side of the town S. 40° E. East and West streets run parallel with Harrison street. The lots, streets and alleys of the town cover an area of 70 acres, 3 rods, 22 perches and consequently the territory between the boundaries of the town and the corporate limits as delineated on this plat is 625 A. 2 R. 18 P.

NOVEMBER 7th, A.D. 1854

Peter McMillin, C. S.

To the commissioners of the county of Perry, and state of Ohio.  
Wm. Spencer, Nixon Brown, R. M. Brown, George Coleman, and John McMillin, trustees of the unincorporated village of Somerset, in said county, respectfully represent that the corporate limits of said town being contained within certain boundaries which are defined by a heavy red line on the plat marked, it hereto attached and more particularly described as commencing at the S.W. corner of out lot No. 9, thence N. O. to the S.W. corner of lot No. 179, thence N. W. to the S.W. corner of lot No. 182, thence S. E. to the S. E. corner of lot No. 181, thence S. E. to the S. E. corner of lot 174, thence S. E. to the S. E. corner of lot 233, thence S. E. to the S. E. corner of lot 72, thence N. W. to the S. E. corner of lot 68, thence S. E. to the S. E. corner of lot 152, thence S. W. to the S. E. corner of lot 165, thence S. E. to the S. E. corner of lot 173, thence S. W. to the S. W. corner of said lot 173, thence S. W. to the S. W. corner of lot 162, thence S. W. to the S. E. corner of out lot No. 8, thence S. E. to the S. E. corner of said out lot No. 8, thence S. W. to the S. W. corner of out lot No. 5, thence S. W. to the place of beginning containing about 3 R. 322 - and being desirous of annexing to said corporation certain territory being contiguous thereto being outside of said corporation limits and within the boundaries designated by a light red (vernon blue) line which is bordered by a blue line upon said plat more particularly described as follows to wit: Beginning at the S. E. corner of the W. 1/2 of section No. 10, Twp. No. 16, thence W. along the line 80 chs. 50 lks. to the S. W. corner of the E. 1/2 of section No. 9, thence N. along the section line 42 chains and 59 links thence - 35° E. 7 chains 5 links to a post