



This Plat was reproduced thru the joint cooperation of T. Chris Wilson, Perry County Engineer and Nancy C. Howdysshell, Perry County Recorder

ATTEST: A Reproduction of Plat Book No. 2
June, 1981

Nancy C. Howdysshell
Nancy C. Howdysshell
Perry County Recorder

Field Notes of the New Line.

The Point of Commencement is at the (A) South West Corner of the NW 1/4 of the North East Quarter of Section 19, Township 18, Range 11, Perry County, Ohio. Thence:

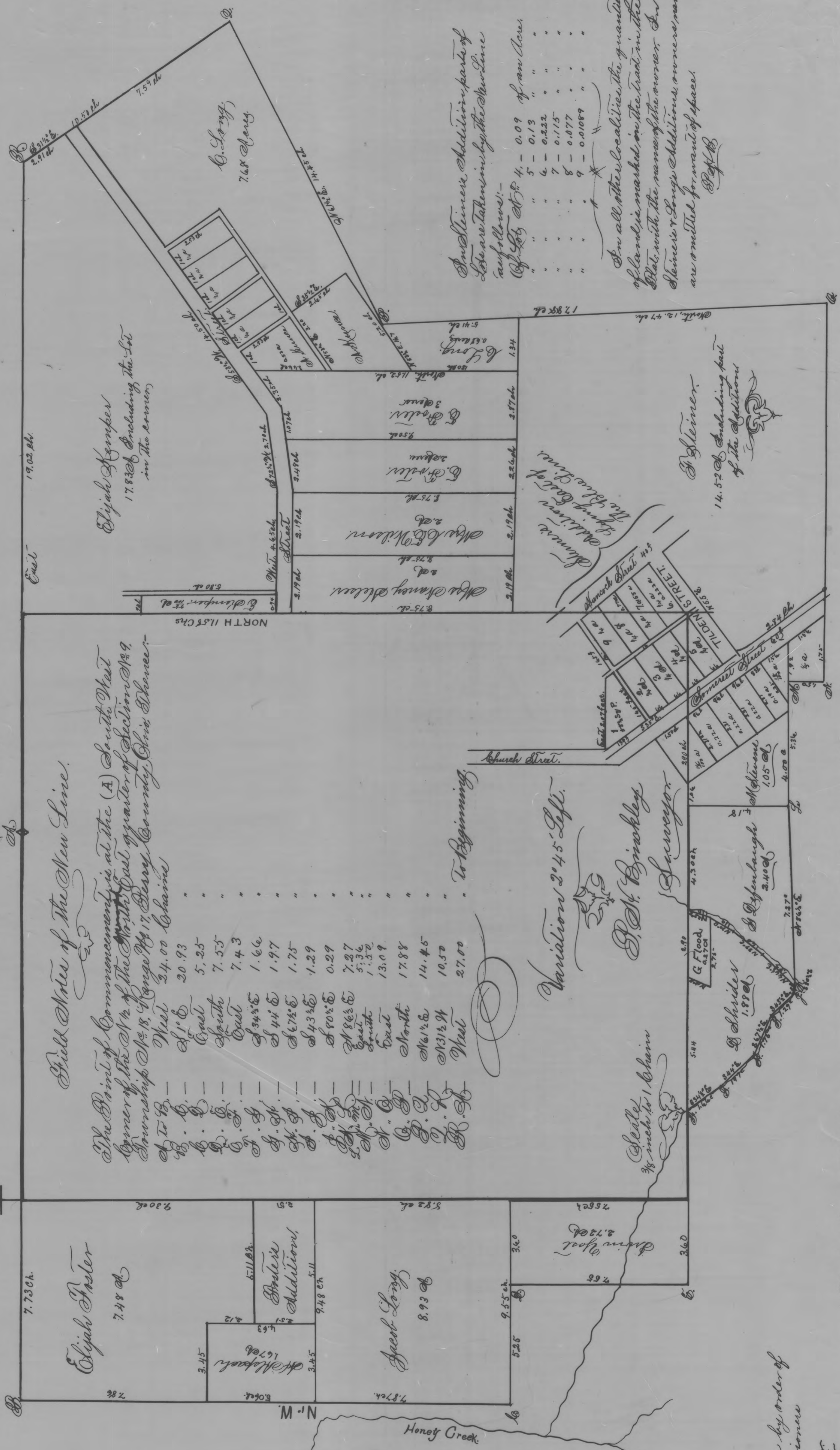
- West 24.00 Chaine
- S 1° 0' 0" E 20.93
- West 5.25
- S 7° 55' 0" E 7.55
- West 7.43
- S 34° 30' E 1.66
- S 44° 0' E 1.97
- S 67° 30' E 1.75
- S 43° 30' E 1.29
- S 50° 30' E 0.29
- S 86° 30' E 7.27
- S 5° 36' 0" E 5.36
- S 1° 52' 0" E 1.52
- West 13.09
- North 17.88
- N 61° 30' E 14.45
- N 31° 24' E 10.57
- West 27.00

To Beginning

Variations 2° 45' Left.

P. H. Brinkley
Surveyor

Scale
3/8 inch to 1 Chain



And linear Addition parts of lots are taken in by the New Line as follows:-

Plot 4	5 - 0.13	of an Acre
"	6 - 0.232	"
"	7 - 0.115	"
"	8 - 0.077	"
"	9 - 0.0189	"

In all other localities the quantity of lands is marked on the plat in the Plat with the name of the owner. In Steinert & Long's Addition owners names are omitted for want of space.

P. H. B.

The Old Corporation Line is drawn in Red in the Plat, the New Line in Black & the angles marked by the Red Letters.

CORPORATION OF THORNVILLE

P. H. Brinkley, hereby certifies that the foregoing is a true and correct Plat of the new Line of Incorporation adopted by the Corporate Authorities of the Village of Thornville, Perry County, Ohio showing in detail all the added territory, as the same was surveyed by me August 1st AD 1884, and plotted from my original field notes, taken on the ground.

Filed in Auditors Office by order of
The Board County Commissioners
Oct 4th 1884.
Orville Shooker
Co. Auditor

Filed for Record July 12th 1885.
At 10 o'clock A. M.
Re-recorded July 19th 1885.
C. H. Embler
Recorder

P. H. Brinkley
Surveyor
August 1st 1884