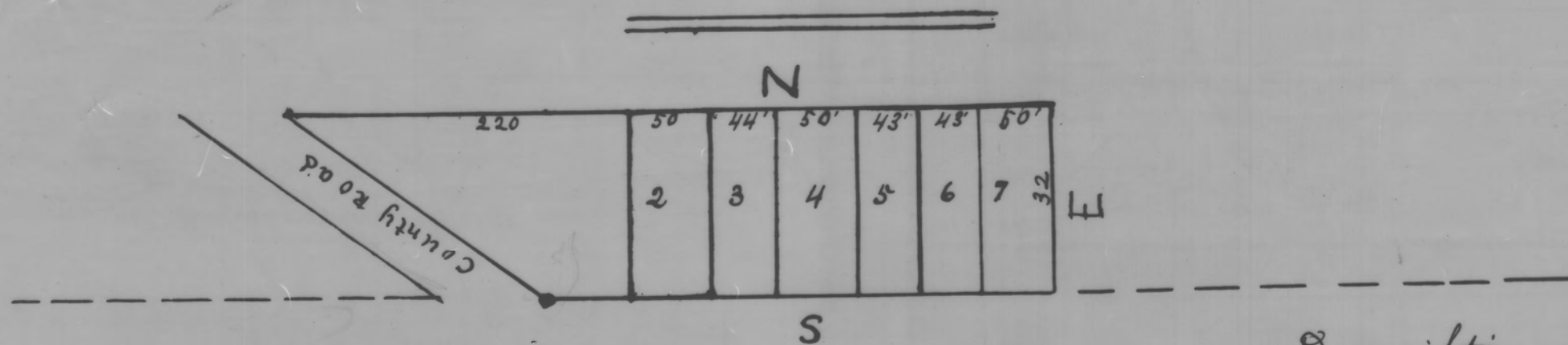


*Harrison's Addition to Corning
Perry County, Ohio*



Description of Plat
 Being a part of the west half of the South west Quarter of
 Section 15, Township 12, and Range 14 of Perry County,
 Beginning at a stone placed on the county road between
 Joseph Rodgers and John D. Larrison thence S. on said line
 336 feet thence E. 132 feet thence N. to said county road
 thence W. along the county road to place of beginning.
 The lot or lots of the dimensions indicated on the accompanying
 plat.

*A McKellop C.E.
 Corning Perry Co Ohio
 July 21st 1883*

*Received for Record July 26th 1883
 Recorded March 7th 1883*

C.H. Brinker Recorder

This Plat was reproduced thru the
 joint cooperation of T. Chris
 Wilson, Perry County Engineer and
 Nancy C. Howdysshell, Perry County
 Recorder

ATTEST: A Reproduction of Plat Book No. 2

Nancy C. Howdysshell
 Nancy C. Howdysshell
 Perry County Recorder