

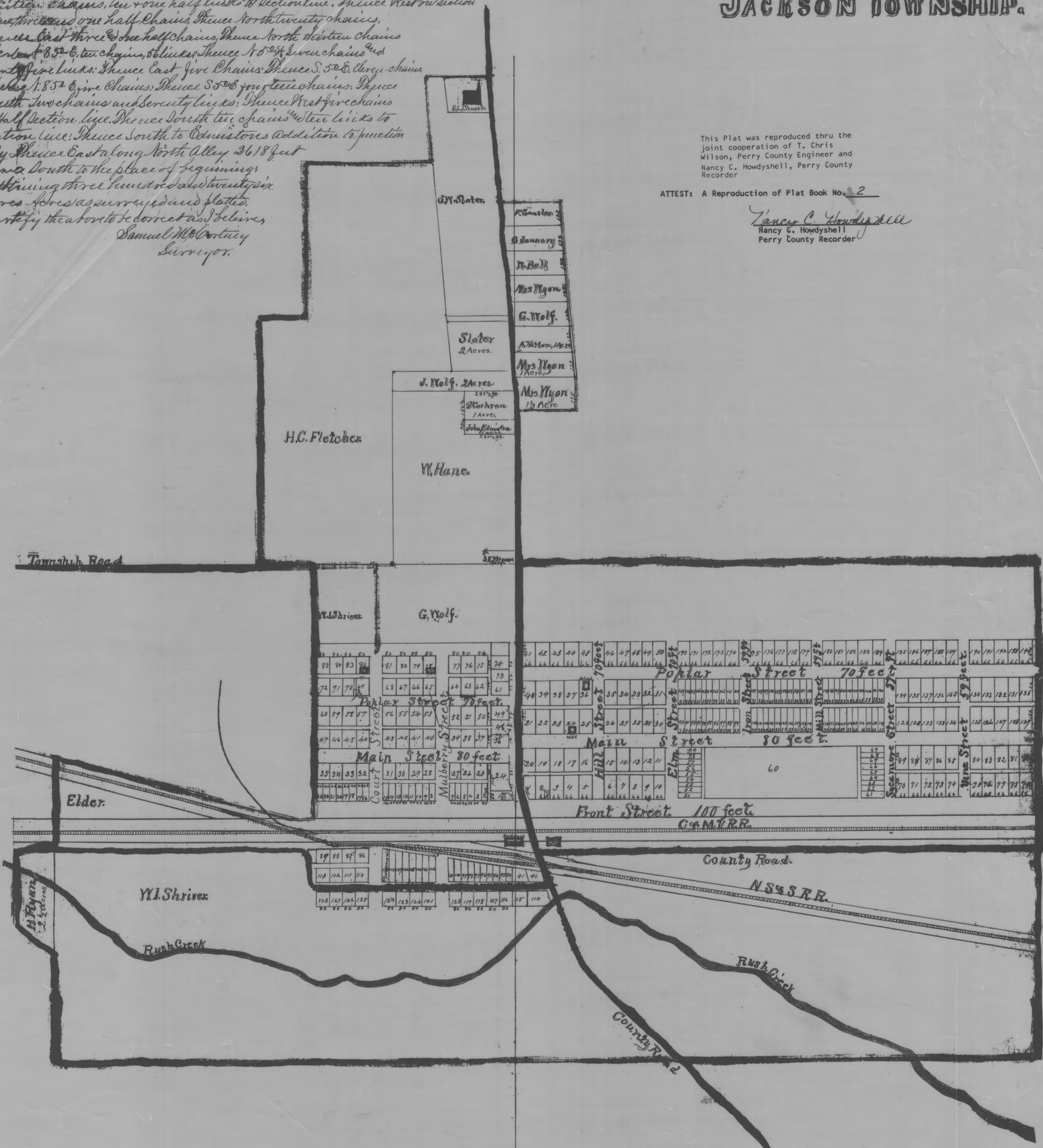
# PLAT OF JUNCTION CITY, JACKSON TOWNSHIP.

*Description of Plat*  
 Commencing at the Southeast corner of the Northeast quarter of Section ten (10) township Fifteen (15) of Range sixteen (16), Perry County Ohio, Thence West ten half sections line to the West line of said Section, Thence North on Section line five chains, Thence North 40° West five chains and thirty links (5.80) Thence North five chains (5.00) Thence N 72° E. three chains and fifty links to section line, Thence North twenty eight rods and fifteen links, Thence Southeast along the North boundary of N. S. S. R.R. twenty four chains and fifty links to the west boundary of Junction City, Thence North thirty chains, ten one half links to section line, Thence West on section line three chains one half chains, Thence North twenty chains, Thence East three chains one half chains, Thence North fifteen chains Thence N 85° E. ten chains, 5 links, Thence N 5° E. seven chains and twenty five links, Thence East five chains, Thence S. 5° E. eleven chains Thence N. 85° E. nine chains, Thence S 5° E. fourteen chains, Thence South two chains and seventy links, Thence West five chains to half section line, Thence South ten chains and ten links to section line, Thence South to Commistions addition to Junction City Thence East along North Alley 26.18 feet Thence South to the place of beginning, Containing three hundred and twenty six Acres as surveyed and platted. Perjury the above to be correct as I believe, Samuel M. Courtney Surveyor.

This Plat was reproduced thru the joint cooperation of T. Chris Wilson, Perry County Engineer and Nancy C. Howdysshell, Perry County Recorder

ATTEST: A Reproduction of Plat Book No. 2

*Nancy C. Howdysshell*  
 Nancy C. Howdysshell  
 Perry County Recorder



Filed this 4<sup>th</sup> day of Sept 1882  
 Orrin Thacker  
 Co. Auditor.

Received for Record Nov 21<sup>st</sup> 1882 at 10 o'clock  
 Recorded January 24<sup>th</sup> 1883  
 C.H. Parker