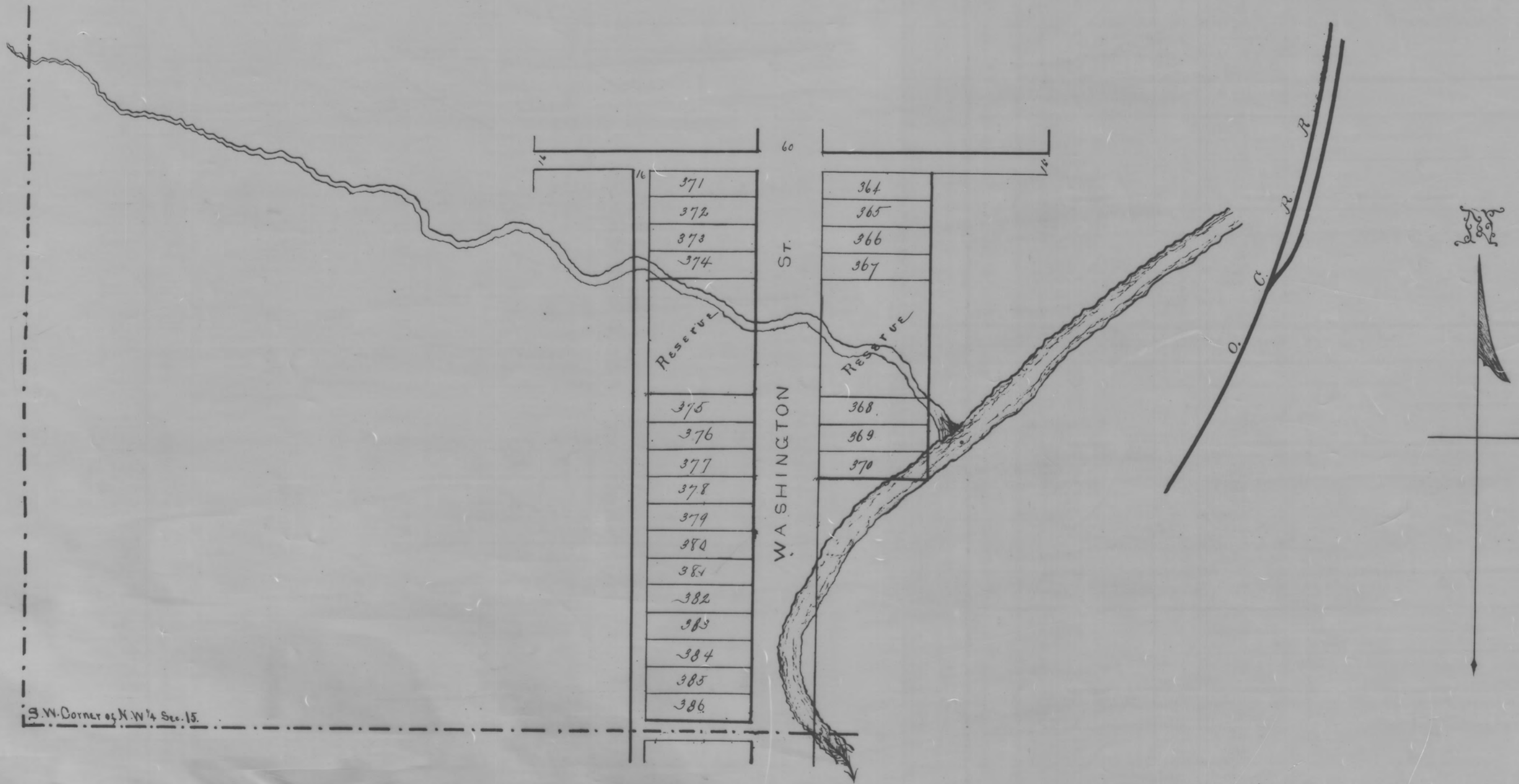


ADDITION TO

FERRARA



Lots numbered from 364 to 386 both inclusive are corner
May 11th 1880.

Frank J. Dick, Surveyor.

Witnessed May 12th 1880.
Quorum May 13th 1880.

J. N. Moore, Recorder.

This Plat was reproduced thru the joint cooperation of T. Chris Wilson, Perry County Engineer and Nancy C. Howdysshell, Perry County Recorder

ATTEST: A Reproduction of Plat Book No. 2

Nancy C. Howdysshell
Nancy C. Howdysshell
Perry County Recorder