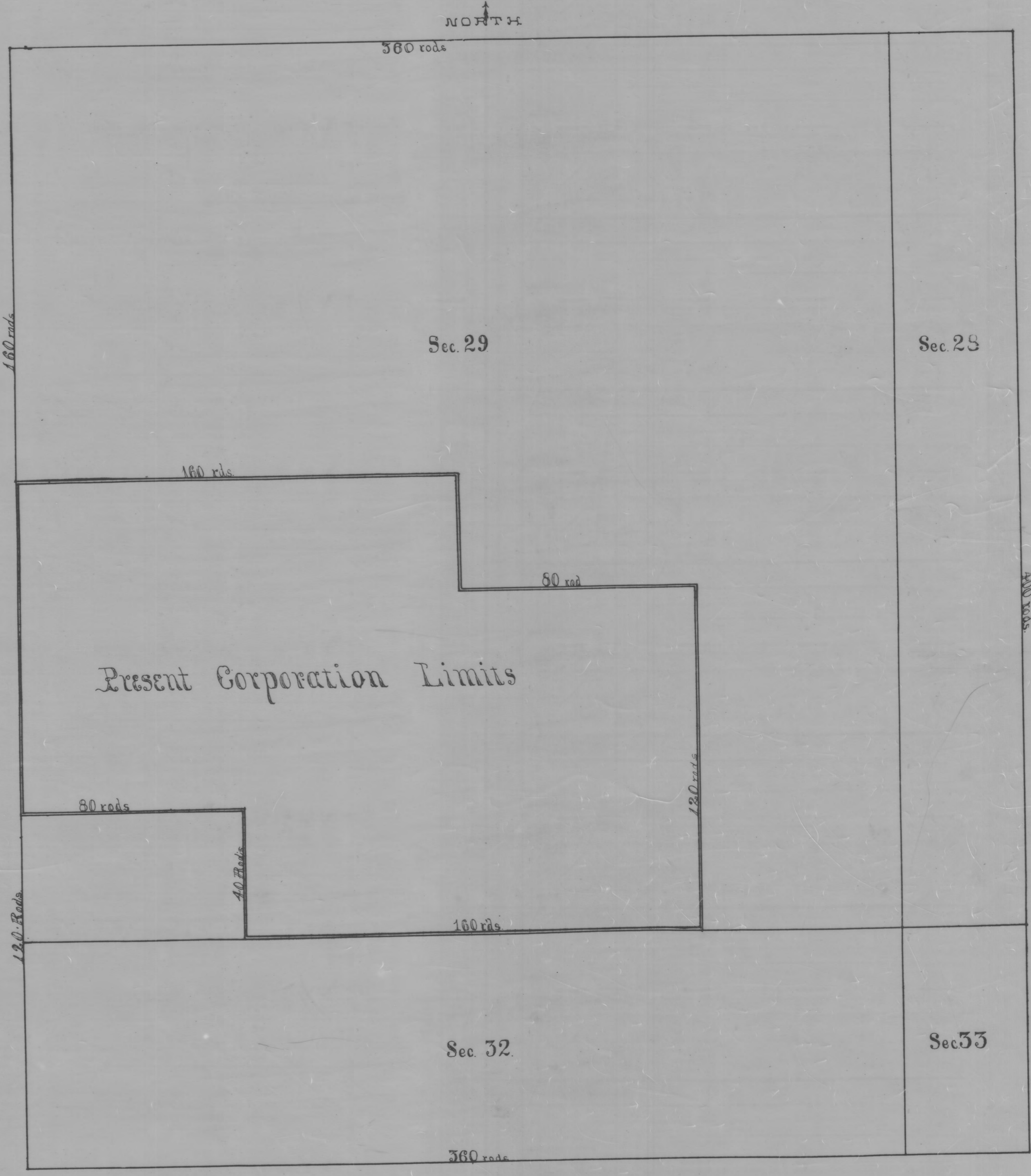


TERRITORY ANNEXED TO THE CORPORATION OF

NEW STRAITSVILLE



This Plat was reproduced thru the joint cooperation of T. Chris Wilson, Perry County Engineer and Nancy C. Howdysshell, Perry County Recorder

ATTEST: A Reproduction of Plat Book No. 2

June, 1981

Nancy C. Howdysshell
Nancy C. Howdysshell
Perry County Recorder