

MUSKINGUM COUNTY NEWTON TWP.

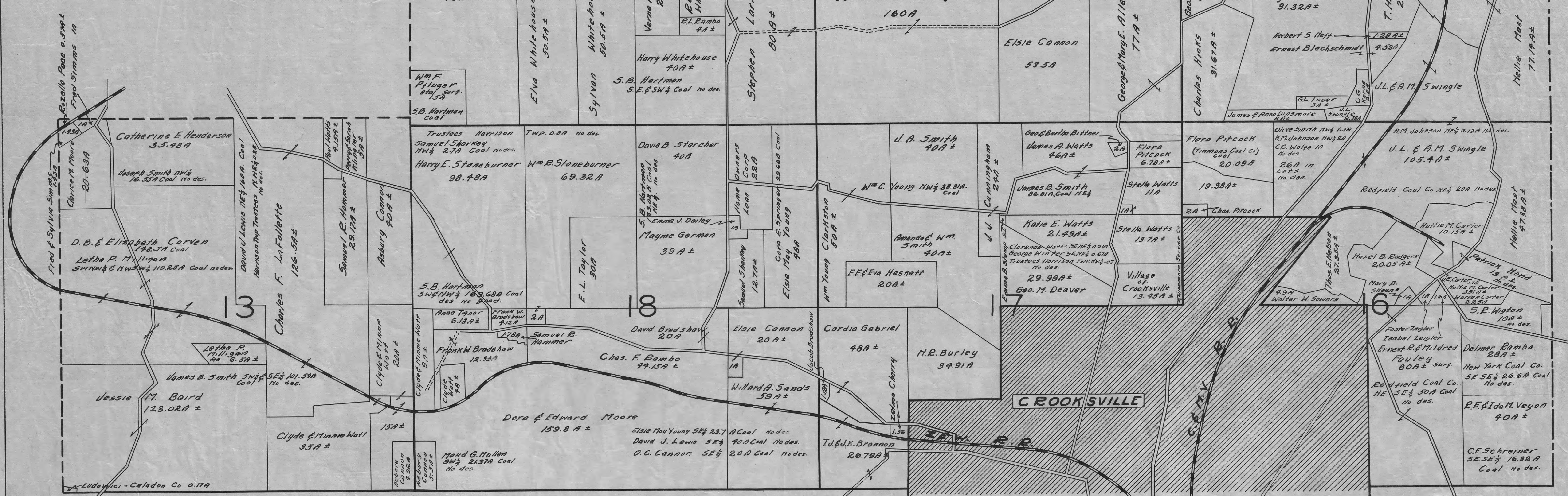
Note Sec. 4.
The following are in Roseville Corp.

Goldie Taylor NE 1/4 1A
Bertha & Alice Calhoun NE 1/4 1.5A
L.M. & Jane Full NE 1/4 1.65A
Claude Nelson NE 1/4 1.88A
Quaker State Oil Co. NE 1/4 1.5A
G.F. & Callie Sagie NE 1/4 0.5A
Grace B. McCullough NE 1/4 0.17A
Sam & Jessie Lewis NE 1/4 0.09A
John & Nellie McBrayer NE 1/4 0.43A
Cora Garrett et al NE 1/4 0.15A
Wallace Yocum NE 1/4 0.25A
A.R. & Pauline Morgan NE 1/4 0.21A
Grace Nelson NE 1/4 0.3A
Harry L. Elder SE 1/4 0.6

The following have poor desc. or Can not find.
Chas. Brown (dead) SE 1/4 NE 1/4 0.16A
Earl F. Earhart NE 1/4 0.13A
Ira Angell (dead) NE 1/4 0.15A
Fred Jones SE 1/4 NE 1/4 0.18A
Roseville Bd. of Education out Lot 4A-1
Earl Smith SW 1/4 SE 1/4 0.25A
H.H. Stipe SE 1/4 0.14A
H.T. Johnson NE 1/4 1.77A
Guy & Moody NE 1/4 0.5A
Roseville Bd. of Education SESE 1/4 0.5A
Nelson-McCoy Pottery Co. NE 1/4 1A
Earl L. & G.A. Marple NE 1/4 NE 1/4 0.12A
Fred Jones SE 1/4 NE 1/4 0.21A

Note Sec. 9
The following tracts in sec. 9 have bad desc. or Can not find.

Penna.-Ohio & Detroit R.R. Co. SE 1/4 31.27A ± R.M.?
Chas. & Mary McCoughey NE 1/4 NW 1/4 2.4A
Israel Henning NW 1/4 E 1/4 NW 1/4 0.09A
Chas. & Marie King NW NE 1/4 1A
Crosby & Rosalia Smithley NW NE 1/4 1.13A
Francis & Edna Grant E 1/4 NW 1/4 0.17A
Hughie Grant NW NE 1/4 0.26A
Geo. E. & Edna Bell NW NE 1/4 0.06A
W.H. Hoff E 1/4 NE 1/4 0.15A
Village of Roseville E 1/4 NE 1/4 0.15A



HARRISON TWP.
N 1/2. T 14 R 14