

SALTCLICK TWP.

# PERRY COUNTY COAL TOWNSHIP

T-16N, R-15W REVISED: 5-1-97

## KENTON C. CANNON P.E., P.S.

### PERRY COUNTY ENGINEER

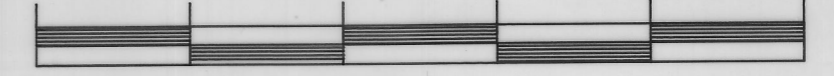
COMMISSIONERS

MICHAEL HEAVENER

MIKE KENNEDY

JOHN ALTIER

0 1000 2000 3000 4000 5000



SCALE IN FEET

PROPERTY LINES SHOWN ARE APPROXIMATE

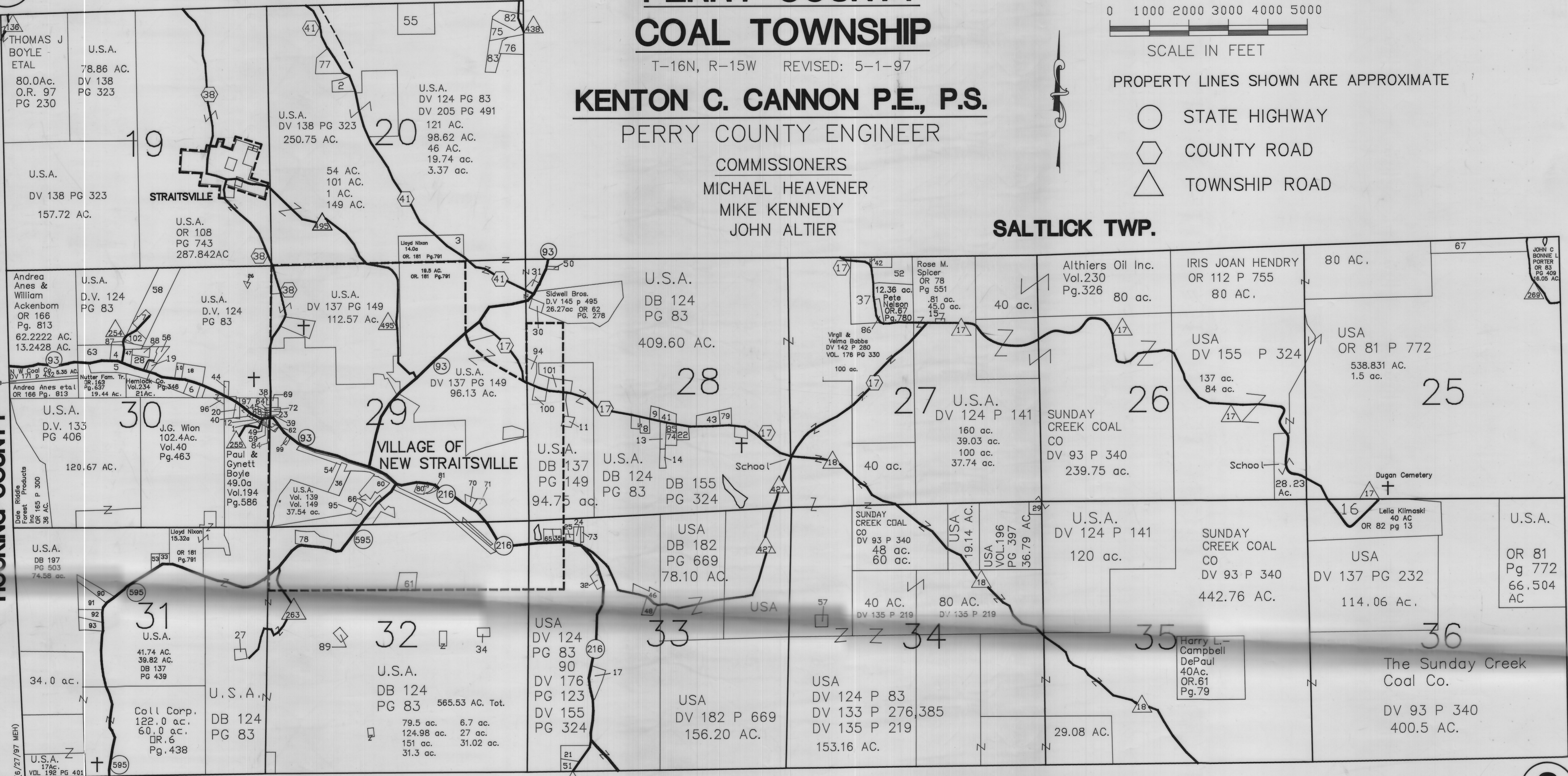
- STATE HIGHWAY
- ⬡ COUNTY ROAD
- △ TOWNSHIP ROAD

SALTCLICK TWP.

MONDAY CREEK

HOCKING COUNTY

MONROE TWP.



HOCKING COUNTY